

## Installing Label Printer Driver on Windows and prepare before use

1. Double click the installer to begin.

**ATTENTION: Before installation, please ensure printer is connected and turned on!**

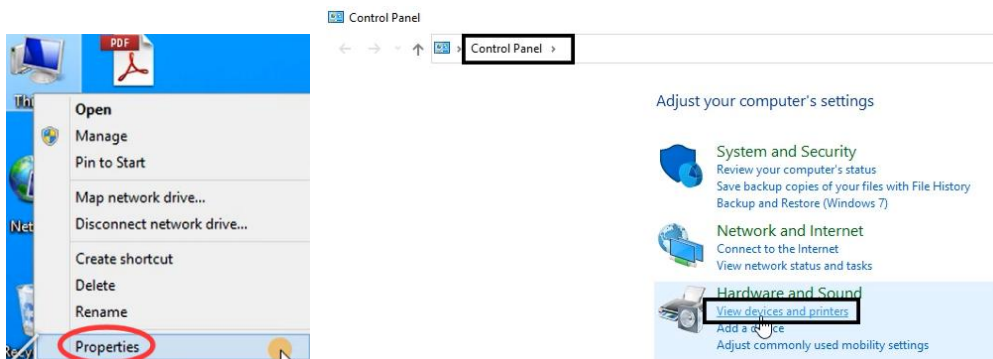
2. Follow the installation steps until you receive this message.



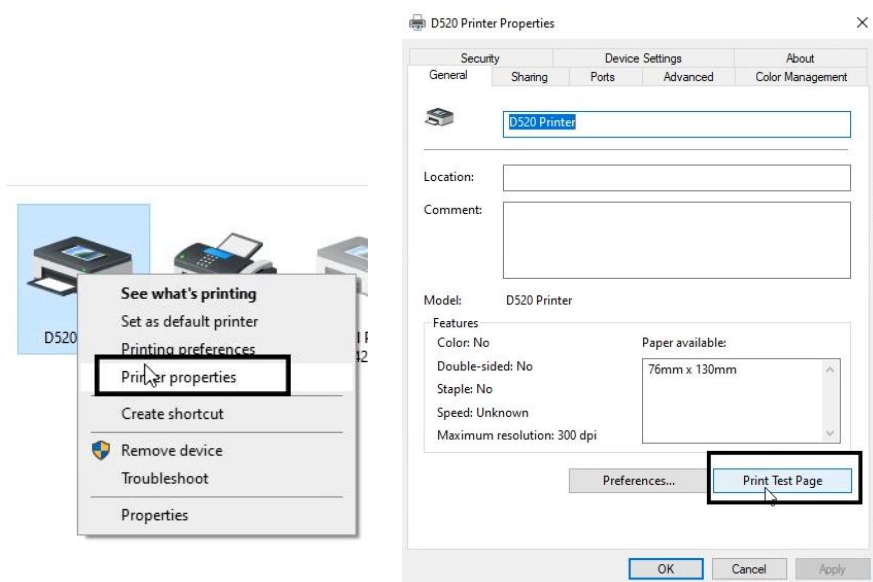
3. After installation, to check the printer is connected successfully:

Go to "Control panel" -> "Devices and Printers"

(Right click on "This PC", choose "Properties", then click on "Control panel"-> "Devices and Printers")

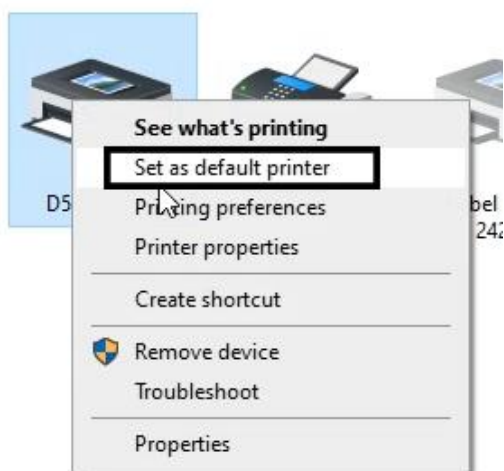


-> Right click on "D520" -> "Printer Properties"-> Click on "Print Test Page"



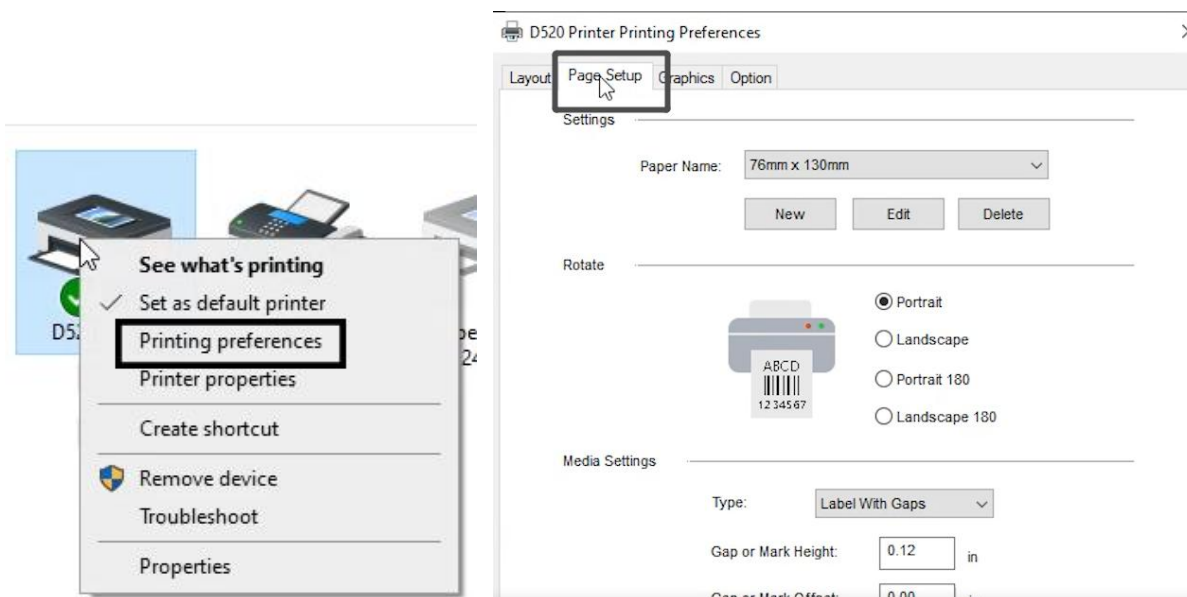
4. Set as default printer:

Right click on "D520" -> choose "Set as default printer"

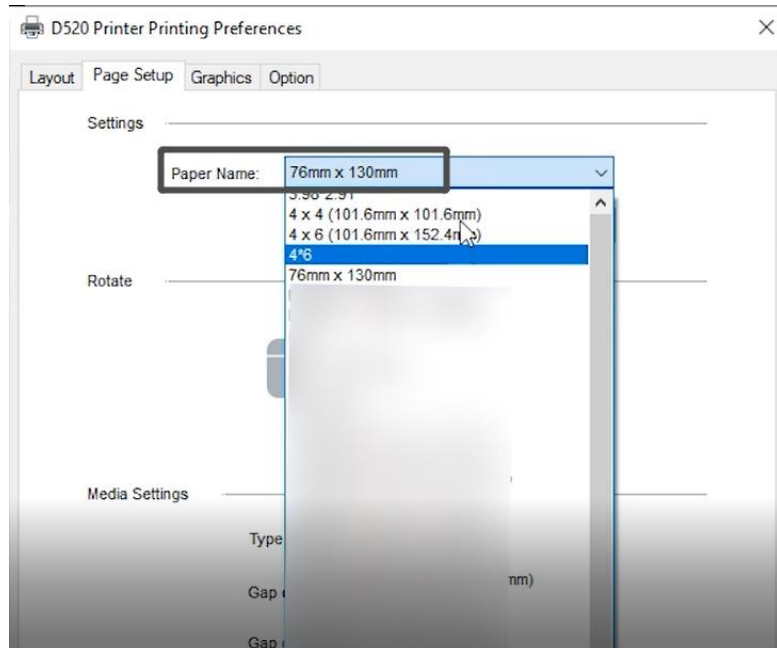


5. Select the paper type

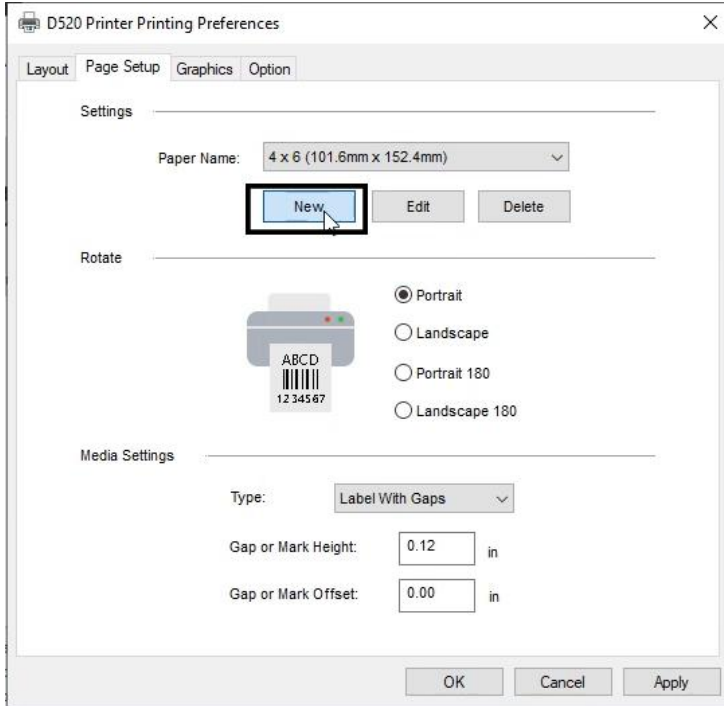
(1) Right click on "D520" -> choose "Printer Preferences" -> go to "Page Setup"



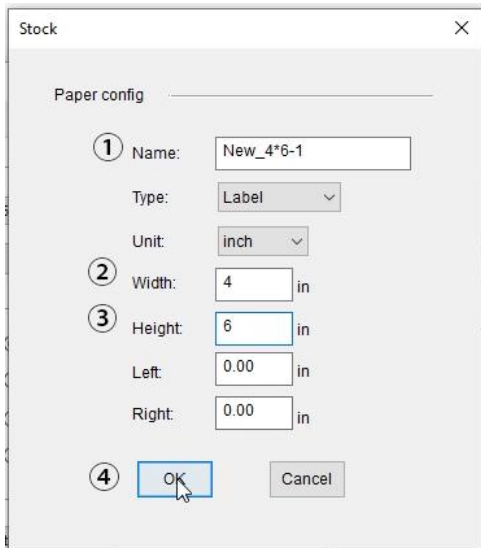
(2) You can choose the size you need in "Paper Name".



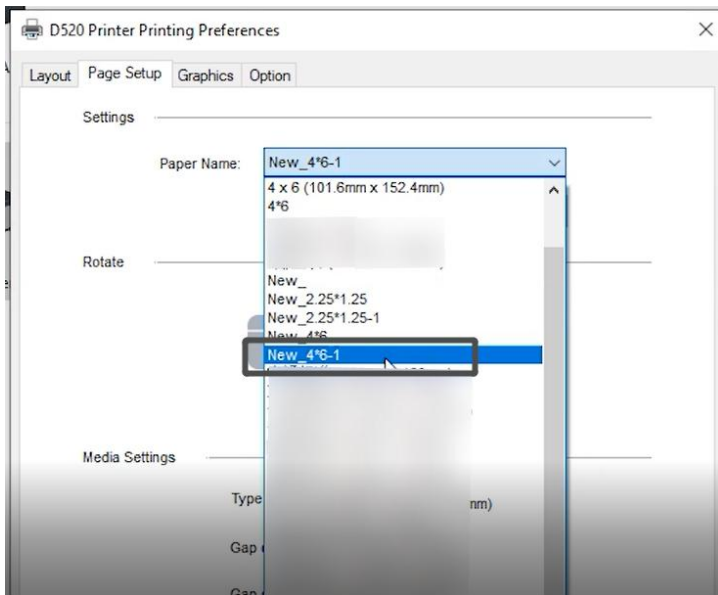
(3) If the size you need is not listed, then click "New" to create needed size.



(4) Input the size of "Width", "Length" and "Name", then click "Ok" to archive.

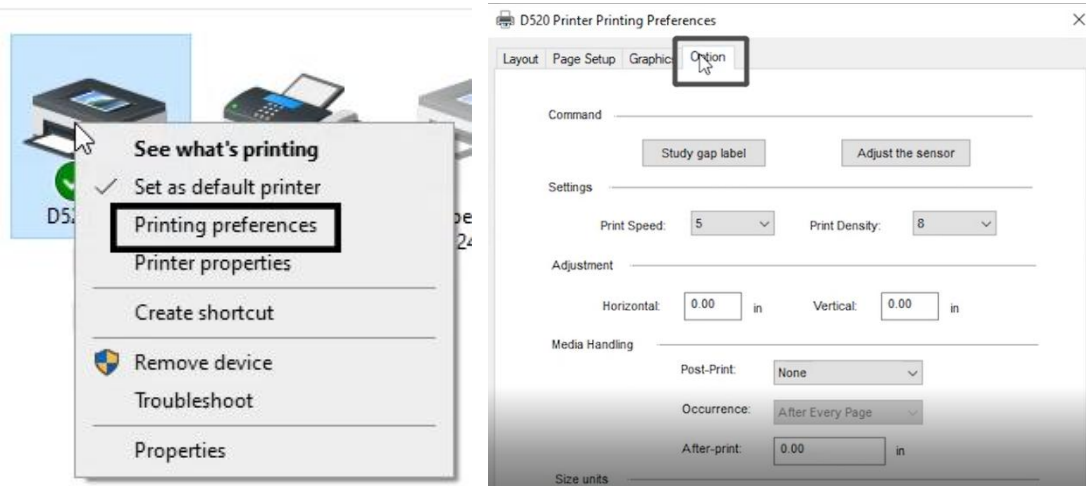


(5) Then choose the size you create in "Paper Name".



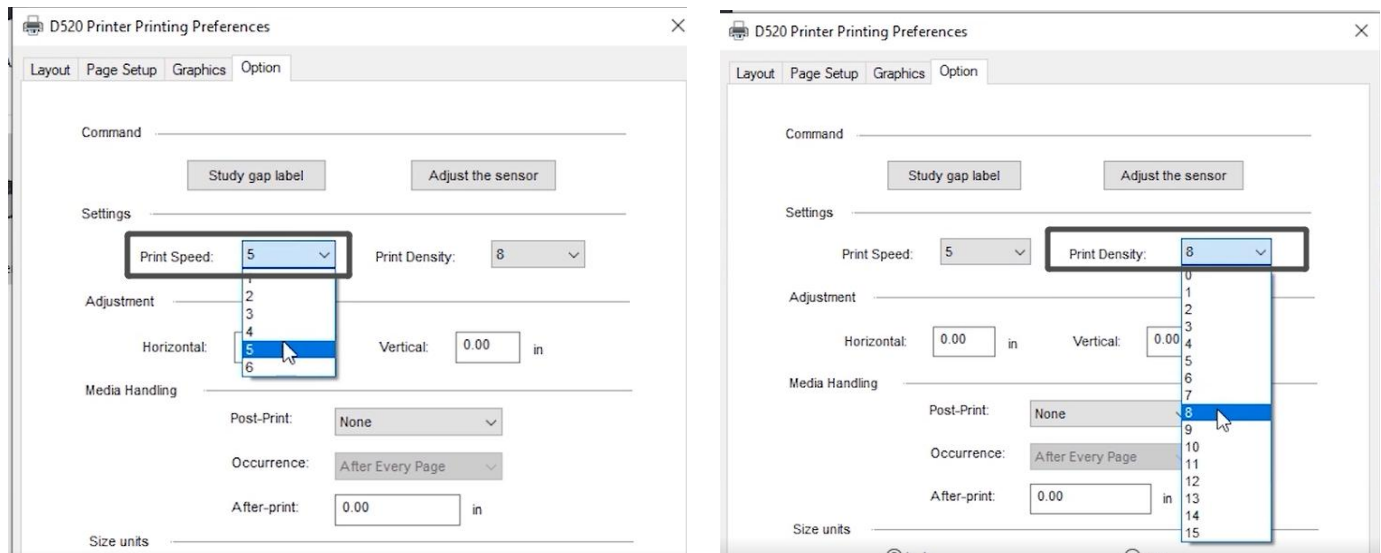
## 6. Set up Print speed and Darkness

(1) Right click on "D520" -> choose "Printer Preferences"-> go to "Option"

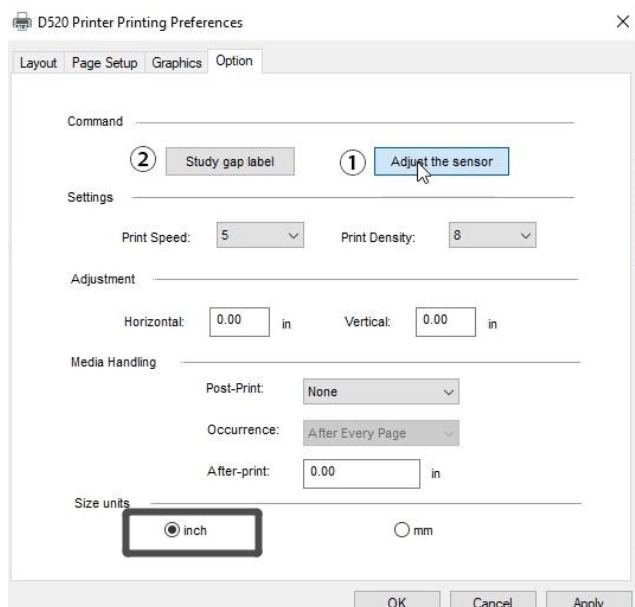


(2) You can change the printing speed (from "Print Speed") and the Darkness (from "Print Density") of your printing

(Larger number means higher Darkness)

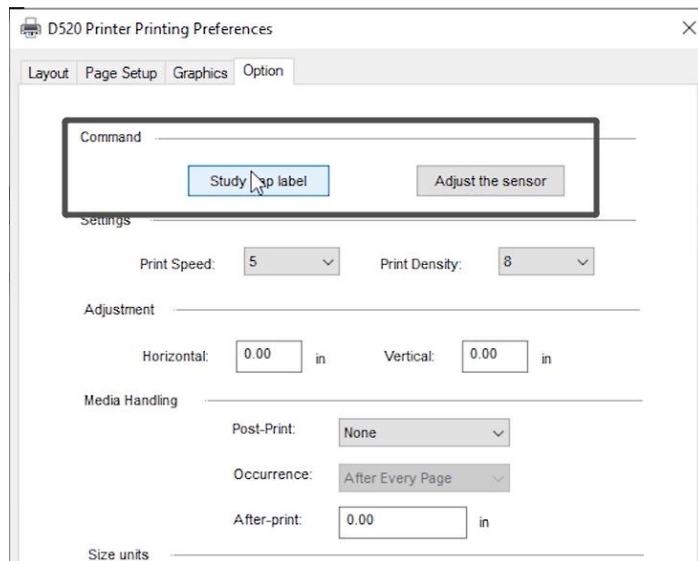


(3) You can change Size units

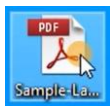


(4)Click "Adjust the sensor" to adjust your printer sensor, then click "Study gap label" to let your printer learn the gap label.

If your printer flashes the blue light, it means that the learning has failed, then you need to repeat the above 2 button clicks again.



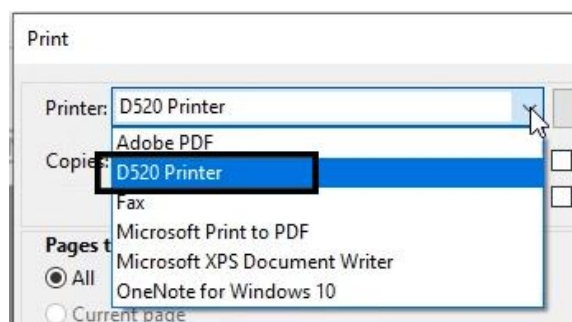
7. Choose file (PDF file) to print.



(1) Click "Print"



(2)Select Printer "D520"



(3)Before click Print, check the preview and print size. Then click "Print"

Scale: 100%

4 x 6 inches

**P** 0229080201  
11/27/07 08:10:27 99999  
02080101 0112 00000

**PRIORITY MAIL 2-DAY™**

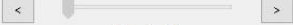
John Smith  
1234 BARNES RD  
CARSON NV 30000 99

SHIP TO: DO NOT SHIP  
11 CAMPBELL AVE  
CAMPBELL CA 95009

**USPS TRACKING #**

88888888888888888888888888888888

**DO NOT SHIP**



Page 1 of 1

Print

Cancel