

# Nikon

DIGITAL CAMERA

# COOLPIX B700

## Quick Start Guide



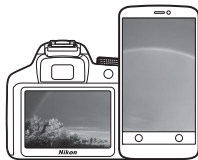
|  |    |
|--|----|
| For Smart Device Users                 | ii |
| Introduction                           | iv |
| Parts of the Camera                    | 1  |
| Getting Started                        | 2  |
| Basic Shooting and Playback Operations | 12 |
| Other Functions                        | 18 |
| Technical Notes                        | 22 |

En

- Read this manual thoroughly before using the camera.
- To ensure proper use of the camera, be sure to read "For Your Safety" (page viii).
- After reading this manual, keep it in a readily accessible place for future reference.



# SnapBridge



## Your images. The world. Connected

Welcome to SnapBridge — Nikon's new family of services to enrich your image experience. SnapBridge eliminates the barrier between your camera and compatible smart device, through a combination of *Bluetooth®* low energy (BLE) technology and a dedicated app. The stories you capture with your Nikon camera and lenses are automatically transferred to the device as they are taken. They can even be uploaded effortlessly to cloud storage services, inviting access across all your devices. You can share your excitement, when and where you want.

### Download the SnapBridge app to get started!

Take advantage of the wide-ranging convenience by downloading the SnapBridge app onto your smart device now. Through a few simple steps, this app connects your Nikon cameras with a compatible iPhone®, iPad® and/or iPod touch® or smart devices running on the Android™ operating system. The app is available free from the website (<http://snapbridge.nikon.com>), Apple App Store® and Google Play™.

For the latest information on SnapBridge, visit the Nikon website for your area (📖vi).



Download on the  
**App Store**



ANDROID APP ON

**Google Play**

**COOLPIX B700 Model Name: N1513**

## The exciting image experience that SnapBridge offers...



Automatic picture transfer from camera to smart device thanks to the constant connection between the two devices — making online photo sharing easier than ever

### NIKON IMAGE SPACE



Upload of photos and thumbnail images to the NIKON IMAGE SPACE cloud service

## A range of services that enriches your imaging life, including:

- Camera remote control
- Imprinting up to two pieces of credit information (e.g. copyright, comments, text and logos) on pictures
- Automatic update of camera's date and time info and location info
- Receive camera's firmware updates



**See from page 6 onwards for information on setting or using SnapBridge.**

# Introduction

## Read This First

Thank you for purchasing the Nikon COOLPIX B700 digital camera.

### Downloading the “Reference Manual”

The Reference Manual (PDF format) provides more details in various languages on how to use this camera. Use your smart device or computer to refer to it along with this manual. Download the Reference Manual from our Download Center at the URL below.

- The Reference Manual can be viewed using Adobe PDF Reader, iBooks, or other software. Adobe PDF reader can be downloaded from the Adobe website.

### Downloading “ViewNX-i” and “Capture NX-D”

ViewNX-i is free software that enables you to transfer images and movies to your computer for viewing and editing.

Capture NX-D is free software that enables you to fine-tune photos or to change settings for RAW pictures and save them in other formats.

Download the software from our Download Center at the URL below.

### Visit Our Download Center

Visit the website below to download the Reference Manual and software for this camera.

<http://downloadcenter.nikonimglib.com>



— Scan this image with your smart device’s QR code reader.

# Nikon User Support

Should you need technical support, we offer a number of options.

## Internet

For customers in the United States: [www.nikonusa.com](http://www.nikonusa.com)

For customers in Canada: [www.nikon.ca](http://www.nikon.ca) (English), [fr.nikon.ca](http://fr.nikon.ca) (Français)

For customers in Mexico: [www.nikon.com.mx](http://www.nikon.com.mx)

For customers in Brazil: [www.nikon.com.br](http://www.nikon.com.br)

## Telephone

For customers in the United States: **1-800-NIKON-US (1-800-645-6687)**

For customers in Canada: **1-877-534-9910**

For customers in Mexico: **001-888-565-5452**

For customers in Brazil: **0800-886-4566 (0800-88 NIKON)**

## Confirming the Package Contents

In the event that any items are missing, please contact the store where you purchased the camera.



- ☐ COOLPIX B700  
Digital Camera



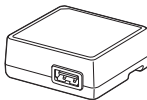
- ☐ Camera Strap



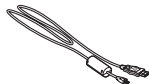
- ☐ LC-CP29 Lens Cap  
(with cord)



- ☐ EN-EL23 Rechargeable  
Li-ion Battery



- ☐ EH-73P Charging AC  
Adapter\*



- ☐ UC-E21 USB Cable

- ☐ Quick Start Guide  
(this manual)

- ☐ Warranty

\* A plug adapter is included if the camera was purchased in a country or region that requires a plug adapter. The shape of the plug adapter varies with the country or region of purchase (p. 4).

**NOTE:** A memory card is not included with the camera. SD, SDHC, and SDXC memory cards are referred to as "memory cards" in this manual.

# Information and Precautions

## Life-Long Learning

As part of Nikon's "Life-Long Learning" commitment to ongoing product support and education, continually updated information is available online at the following websites:

- For users in the U.S.A.: <http://www.nikonusa.com/>
- For users in Europe: <http://www.europe-nikon.com/support/>
- For users in Asia, Oceania, the Middle East, and Africa: <http://www.nikon-asia.com/>

Visit these websites to keep up-to-date with the latest product information, tips, answers to frequently asked questions (FAQs), and general advice on digital imaging and photography. Additional information may be available from the Nikon representative in your area. Visit the website below for contact information.

<http://imaging.nikon.com/>

## Use Only Nikon Brand Electronic Accessories

Nikon COOLPIX cameras are designed to the highest standards and include complex electronic circuitry. Only Nikon brand electronic accessories (including battery chargers, batteries, AC adapters, and USB cables) certified by Nikon specifically for use with this Nikon digital camera are engineered and proven to operate within the operational and safety requirements of this electronic circuitry.

THE USE OF NON-NIKON ELECTRONIC ACCESSORIES COULD DAMAGE THE CAMERA AND MAY VOID YOUR NIKON WARRANTY.

The use of third-party rechargeable Li-ion batteries not bearing the Nikon holographic seal could interfere with normal operation of the camera or result in the batteries overheating, igniting, rupturing, or leaking.

**Holographic seal:** Identifies this device as an authentic Nikon product.



For more information about Nikon brand accessories, contact a local authorized Nikon dealer.

## Before Taking Important Pictures

Before taking pictures on important occasions (such as at weddings or before taking the camera on a trip), take a test shot to ensure that the camera is functioning normally. Nikon will not be held liable for damages or lost profits that may result from product malfunction.

## About the Manuals

- No part of the manuals included with this product may be reproduced, transmitted, transcribed, stored in a retrieval system, or translated into any language in any form, by any means, without Nikon's prior written permission.
- Illustrations and screen content shown in this manual may differ from the actual product.
- Nikon reserves the right to change the specifications of the hardware and software described in these manuals at any time and without prior notice.
- Nikon will not be held liable for any damages resulting from the use of this product.
- While every effort was made to ensure that the information in these manuals is accurate and complete, we would appreciate it were you to bring any errors or omissions to the attention of the Nikon representative in your area (address provided separately).

## Comply with Copyright Notices

Under copyright law, photographs or recordings of copyrighted works made with the camera can not be used without the permission of the copyright holder. Exceptions apply to personal use, but note that even personal use may be restricted in the case of photographs or recordings of exhibits or live performances.

## Disposing of Data Storage Devices

Please note that deleting images or formatting data storage devices such as memory cards does not completely erase the original image data. Deleted files can sometimes be recovered from discarded storage devices using commercially available software, potentially resulting in the malicious use of personal image data. Ensuring the privacy of such data is the user's responsibility.

Before discarding a data storage device or transferring ownership to another person, make sure to reset all of the camera's settings in **Reset all** in the setup menu (📖20). After resetting, erase all data in the device using commercial deletion software, or format the device in **Format memory** or **Format card** in the setup menu (📖20), then completely refill it with images containing no private information (for example, images of empty sky). Care should be taken to avoid injury or damage to property when physically destroying memory cards.

## For Your Safety

To prevent damage to property or injury to yourself or to others, read "For Your Safety" in its entirety before using this product.

Keep these safety instructions where all those who use this product will read them.



### **DANGER**

**Failure to observe the precautions marked with this icon carries a high risk of death or severe injury.**



### **WARNING**

**Failure to observe the precautions marked with this icon could result in death or severe injury.**



### **CAUTION**

**Failure to observe the precautions marked with this icon could result in injury or property damage.**



### **WARNING**

- Do not use while walking or operating a motor vehicle. Failure to observe this precaution could result in accidents or other injury.
- Do not disassemble or modify this product. Do not touch internal parts that become exposed as the result of a fall or other accident. Failure to observe these precautions could result in electric shock or other injury.
- Should you notice any abnormalities such as the product producing smoke, heat, or unusual odors, immediately disconnect the battery or power source. Continued operation could result in fire, burns or other injury.
- Keep dry. Do not handle with wet hands. Do not handle the plug with wet hands. Failure to observe these precautions could result in fire or electric shock.
- Do not let your skin remain in prolonged contact with this product while it is on or plugged in. Failure to observe this precaution could result in low-temperature burns.
- Do not use this product in the presence of flammable dust or gas such as propane, gasoline or aerosols. Failure to observe this precaution could result in explosion or fire.
- Do not aim the flash at the operator of a motor vehicle. Failure to observe this precaution could result in accidents.



- Keep this product out of reach of children. Failure to observe this precaution could result in injury or product malfunction. In addition, note that small parts constitute a choking hazard. Should a child swallow any part of this product, seek immediate medical attention.
- Do not entangle, wrap or twist the straps around your neck. Failure to observe this precaution could result in accidents.
- Do not use batteries, chargers, AC adapters, or USB cables not specifically designated for use with this product. When using batteries, chargers, AC adapters, and USB cables designated for use with this product, do not:
  - Damage, modify, forcibly tug or bend the cords or cables, place them under heavy objects, or expose them to heat or flame.
  - Use travel converters or adapters designed to convert from one voltage to another or with DC-to-AC inverters.Failure to observe these precautions could result in fire or electric shock.
- Do not handle the plug when charging the product or using the AC adapter during thunderstorms. Failure to observe this precaution could result in electric shock.
- Do not handle with bare hands in locations exposed to extremely high or low temperatures. Failure to observe this precaution could result in burns or frostbite.
- Do not leave the lens pointed at the sun or other strong light sources. Light focused by the lens could cause fire or damage the product's internal parts. When shooting backlit subjects, keep the sun well out of the frame.



## CAUTION

- Turn this product off when its use is prohibited. Disable wireless features when the use of wireless equipment is prohibited. The radio-frequency emissions produced by this product could interfere with equipment onboard aircraft or in hospitals or other medical facilities.
- Remove the battery and disconnect the AC adapter if this product will not be used for an extended period. Failure to observe this precaution could result in fire or product malfunction.
- Do not touch moving parts of the lens or other moving parts. Failure to observe this precaution could result in injury.
- Do not fire the flash in contact with or in close proximity to the skin or objects. Failure to observe this precaution could result in burns or fire.
- Do not leave the product where it will be exposed to extremely high temperatures, for an extended period such as in an enclosed automobile or in direct sunlight. Failure to observe this precaution could result in fire or product malfunction.



## DANGER for Batteries

- Do not mishandle batteries. Failure to observe the following precautions could result in the batteries leaking, overheating, rupturing, or catching fire:
  - Use only rechargeable batteries approved for use in this product.
  - Do not expose batteries to flame or excessive heat.
  - Do not disassemble.
  - Do not short-circuit the terminals by touching them to necklaces, hairpins, or other metal objects.
  - Do not expose batteries or the products in which they are inserted to powerful physical shocks.
- Do not attempt to recharge EN-EL23 rechargeable batteries using chargers/cameras not specifically designated for this purpose. Failure to observe this precaution could result in the batteries leaking, overheating, rupturing, or catching fire.
- If battery liquid comes into contact with the eyes, rinse with plenty of clean water and seek immediate medical attention. Delaying action could result in eye injuries.

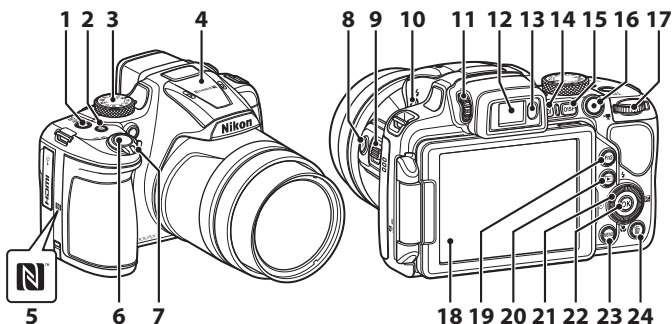


## WARNING for Batteries

- Keep batteries out of reach of children. Should a child swallow a battery, seek immediate medical attention.
- Do not immerse this product in water or expose to rain. Failure to observe this precaution could result in fire or product malfunction. Immediately dry the product with a towel or similar object should it become wet.
- Discontinue use immediately should you notice any changes in the batteries, such as discoloration or deformation. Cease charging if they do not charge in the specified period of time. Failure to observe this precaution could result in the batteries leaking, overheating, rupturing, or catching fire.
- Prior to disposal, insulate battery terminals with tape. Overheating, rupture, or fire may result should metal objects come into contact with the terminals. Recycle or dispose of batteries in accord with local regulations.
- If battery liquid comes into contact with a person's skin or clothing, immediately rinse the affected area with plenty of clean water. Failure to observe this precaution could result in skin irritation.

# Parts of the Camera

## The Camera Body



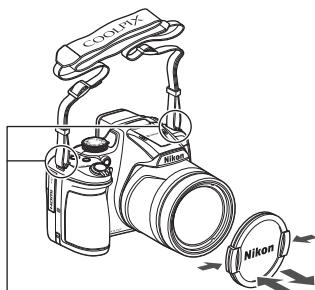
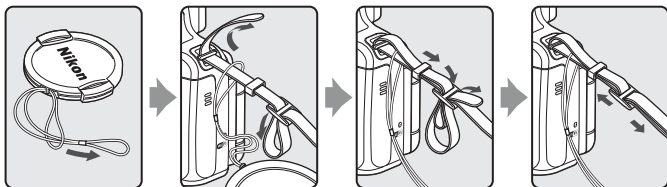
- 1 Power switch/power-on lamp (charge lamp)
- 2 **Fn1** (function 1) button
- 3 Mode dial
- 4 Flash
- 5 N-Mark (NFC antenna)
- 6 Shutter-release button
- 7 Zoom control  
**W** : Wide-angle  
**T** : Telephoto  
 : Thumbnail playback  
 : Playback zoom
- 8 (snap-back zoom) button
- 9 Side zoom control
- 10 (flash pop-up) button

- 11 Diopter adjustment control
- 12 Electronic viewfinder
- 13 Eye sensor
- 14 (monitor) button
- 15 **DISP** (display) button
- 16 (movie-record) button
- 17 Command dial
- 18 Monitor
- 19 **Fn2** (function 2) button
- 20 (playback) button
- 21 Rotary multi selector (multi selector)
- 22 (apply selection) button
- 23 **MENU** (menu) button
- 24 (delete) button

# Getting Started

## How to Attach the Camera Strap and Lens Cap

Attach the lens cap to the strap, and then attach the strap to the camera.

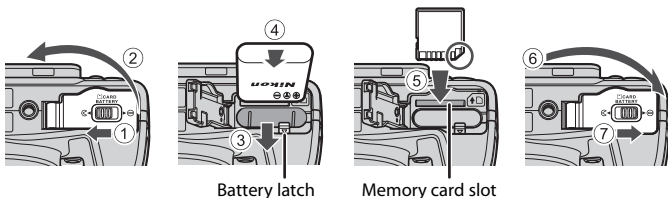


Attach the strap at two places.

### ✓ Lens Cap

At times when you are not shooting images, attach the lens cap to the lens to protect it.

## Inserting the Battery and Memory Card



- With the battery's positive and negative terminals oriented correctly, move the orange battery latch (③), and fully insert the battery (④).
- Slide the memory card in until it clicks into place (⑤).
- Be careful not to insert the battery or memory card upside-down or backward, as this could cause a malfunction.

### ✓ Formatting a Memory Card

The first time you insert a memory card that has been used in another device into this camera, make sure to format it with this camera.

- **Note that formatting a memory card permanently deletes all images and other data on the memory card.** Be sure to make copies of any images you wish to keep before formatting the memory card.
- Insert the memory card into the camera, press the **MENU** button, and select **Format card** in the setup menu (📖20).

## Removing the Battery or Memory Card

Turn the camera off and make sure that the power-on lamp and screen have turned off, and then open the battery-chamber/memory card slot cover.

- Move the battery latch to eject the battery.
- Gently push the memory card into the camera to partially eject the memory card.
- Be careful when handling the camera, battery, and memory card immediately after using the camera, as they may be hot.



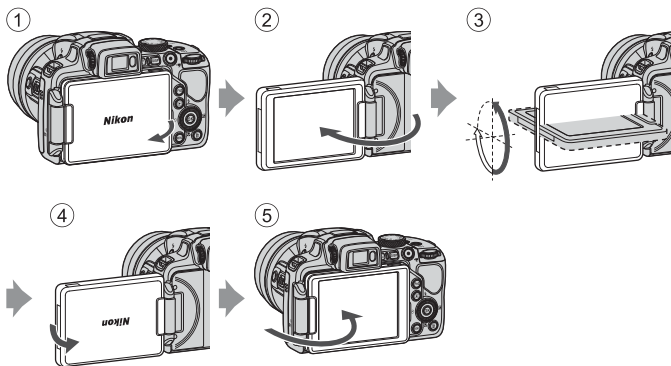
## ✓ Notes About the USB Cable

- Do not use a USB cable other than the UC-E21. Using a USB cable other than the UC-E21 could result in overheating, fire or electric shock.
- Check the shape and direction of the plugs and do not insert or remove the plugs at an angle.

## ✓ Notes About Charging the Battery

- The camera can be operated while the battery is charging, but the charging time increases. The power-on lamp (charge lamp) turns off while the camera is being operated.
  - Movies cannot be recorded while the battery is charging.
- Do not, under any circumstances, use another make or model of AC adapter other than the EH-73P Charging AC Adapter, and do not use a commercially available USB-AC adapter or a battery charger for a mobile phone. Failure to observe this precaution could result in overheating or in damage to the camera.

## Opening the Monitor



- You can adjust the direction and angle of the monitor. For normal shooting, fold the monitor against the back of the camera, facing out (⑤).
- When you are not using or carrying the camera, fold the monitor against the camera body with the screen facing in (①).

## ✓ Notes About the Monitor

When moving the monitor, do not apply excessive force and move slowly within the monitor's adjustable range so that the connection will not be damaged.

# Camera Setup

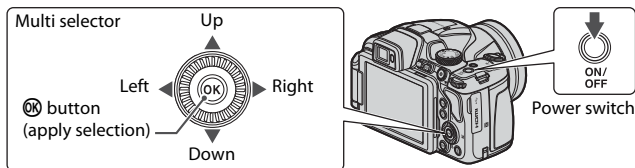
## Setup from a Smartphone or Tablet

- Before proceeding, install the SnapBridge app (📖ii) and enable Bluetooth and Wi-Fi on your smartphone or tablet (below, “smart device”).
- The camera and smart device screens shown in this manual may differ from those of the actual products.

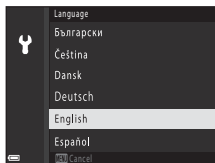


### 1 Turn the camera on.

- Use the multi selector to select and adjust settings.

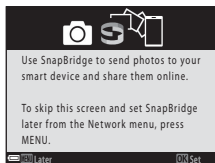


- A language selection dialog will be displayed. Press ▲ or ▼ on the multi selector to highlight a language and press OK to select.
- The language can be changed at any time using the **Language** option in the setup menu (📖20).



### 2 Press OK when the dialog at right is displayed.

- If you do not wish to use a smart device to configure the camera, press **MENU** (📖8).



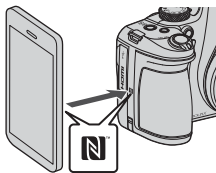


### 3 Pair (i.e., establish a Bluetooth link between) the camera and the smart device.

- **Android Devices with NFC Support**

Touch the camera **N** (N-Mark) to the NFC antenna on the smart device to launch the SnapBridge app.

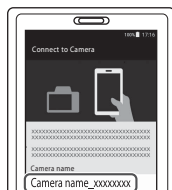
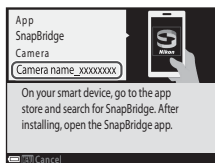
- Enable NFC on the smart device in advance, and then close all apps that use NFC (including the SnapBridge app).
- If the SnapBridge download site is displayed, download and install the app before repeating the above steps.



- **iOS Devices and Android Devices Without NFC Support**

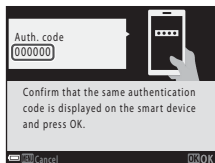
Press the camera **OK** button. The camera will wait for a connection; launch the SnapBridge app on the smart device and follow the on-screen instructions to tap the name (SSID) of the camera you want to pair with.

- In iOS, tap the camera name again when the accessory selection dialog is displayed.



### 4 Check the authentication code.

- After confirming that the camera and smart device display the same six-digit authentication code, follow the steps below to complete pairing (note that the code may not be displayed in some versions of iOS, but you should follow the steps below even if the code is not displayed).
  - **On the camera**, press **OK**.
  - **On the smart device**, tap **Pairing** (the name of the button varies with the smart device).



Camera

## 5 Press **OK** when the dialog at right is displayed.

- When a constant connection between the camera and smart device is established, the dialog at right is displayed.
- If the camera displays **Could not connect.**, press **OK** to return to Step 3. To cancel pairing settings, press **MENU**.



## 6 Follow the on-screen instructions to complete the setup process.

- To record location data with photographs, select **Yes** when prompted and enable the location data features both in the SnapBridge app and on the smart device itself (for more information, see the documentation provided with the smart device).
- You can also synchronize the camera clock to the time reported by the smart device by selecting **Yes** when prompted and enabling synchronization in the SnapBridge app. If you select **No**, set the camera clock from the menus as described in Step 2 on page 9.
- Setup is complete when the camera returns to the shooting display.
- See page 10 for more information on using SnapBridge.

### Where the Use of Wireless Devices Is Prohibited

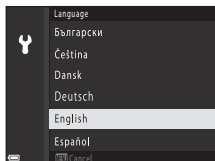
Where the use of wireless devices is prohibited, disable wireless features in the camera network menu by selecting **On** for **Airplane mode**. This will temporarily interrupt the constant connection with the smart device, but the connection is automatically re-established when airplane mode is turned off.

## Setup from the Camera Menus

The camera clock can be set manually.

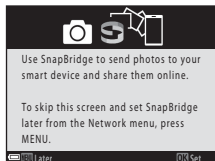
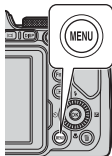
### 1 Turn the camera on (📖6).

- A language selection dialog will be displayed. Press **▲** or **▼** on the multi selector (📖6) to highlight a language and press **OK** to select.
- The language can be changed at any time using the **Language** option in the setup menu (📖20).



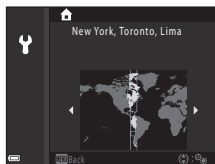
## 2 Press **MENU** when the dialog at right is displayed.

- Select **Yes** when prompted to set the camera clock.



## 3 Highlight your home time zone and press **OK**.

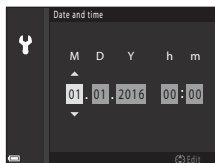
- To turn daylight saving time on press **▲**; ☀ will be displayed at the top of the map. Press **▼** to turn daylight saving time off.



## 4 Press **▲** or **▼** to choose a date format and press **OK**.

## 5 Enter the current date and time and press **OK**.

- Press **◀** or **▶** to highlight items and press **▲** or **▼** to change.
- Press **OK** to set the clock.



## 6 When prompted, press **▲** or **▼** to highlight **Yes** and press **OK**.

- The camera exits to the shooting display when setup is complete.

### **Resetting the Clock**

The **Time zone and date** option in the setup menu can be used to choose the time zone and set the camera clock.

Daylight saving time can be turned on or off in the **Time zone** menu.

# What SnapBridge Can Do for You

The SnapBridge app can be used for a variety of tasks once the camera has been paired with your smart device.

- See SnapBridge app online help for more information.  
<http://nikonimglib.com/snbr/onlinehelp/en/index.html>



## Auto Upload

At default settings, pictures will automatically be uploaded to the smart device as they are taken.

- Place the smart device close to the camera and launch the SnapBridge app.

| Option                        | Description  |
|-------------------------------|--|
| Disabling auto upload         | Auto upload can be disabled using the <b>Send while shooting &gt; Still images</b> option in the camera network menu (📖20).  |
| Upload options                | Use the <b>Send while shooting &gt; Upload (photos)</b> item in the camera network menu to choose the types of pictures automatically uploaded.  |
| Selecting pictures for upload | You can use this option to automatically upload selected pictures that were not uploaded during shooting. <ul style="list-style-type: none"><li>• Use the <b>Mark for upload</b> option in the camera playback menu (📖20) to select pictures.</li><li>• The constant connection ensures that upload will continue even when the camera is off.</li></ul> |
| Resizing pictures for upload  | Use the SnapBridge app to choose the size at which pictures are copied to the smart device. The default size is 2 megapixels.  |
| Embedding photo info          | Use the SnapBridge app to choose the information imprinted on photographs copied to the smart device. Comments and copyright information can be entered in advance from the camera setup menu. You can also imprint text entered in the SnapBridge app.  |



## Notes About Image Upload and Remote Photography

- This feature is not available with RAW pictures.
- Movies cannot be uploaded using the **Send while shooting** or **Mark for upload** options. To upload movies to a smart device, use the SnapBridge app.
- Depending on the camera settings, you may not be able to upload images or use remote photography (📖11). Also, image upload may be interrupted.  
Change the settings or switch to playback mode. Read “Image Upload and Remote Photography” in the Reference Manual for more details.
- See “Wi-Fi Connection” (📖11) for more information.

## Wireless Networks

| Option                           | Description  |
|----------------------------------|--|
| Pairing after camera setup       | Select <b>Connect to smart device</b> in the camera network menu, and follow the instructions in "Setup from a Smartphone or Tablet" from Step 2 (📖6). |
| Unpairing                        | In the SnapBridge app, tap ➡ in ⚙️ <b>Connect</b> , and then tap <b>End pairing</b> on the screen that is displayed.                                   |
| Number of pairable smart devices | The camera can be paired with up to five smart devices. However, it can connect to only one device at a time.  |



### Re-pairing

Re-pair when pairing again after unpairing.

Select **Connect to smart device** in the camera network menu, and then follow the instructions on the camera and smart device screens.

When **Non-NFC enabled devices: press OK.** is displayed, press the ⓧ button, and then launch the SnapBridge app on the smart device. Tap ➡ in ⚙️ **Connect**, and then tap the name (SSID) of the camera you want to pair with on the screen that is displayed. When the authentication code is displayed on the camera screen, follow the instructions in "Setup from a Smartphone or Tablet" from Step 4 (📖7).

## Other Options for the SnapBridge App

| Option  | Description   |
|---|---|
| Remote photography  | Use the smart device to release the camera shutter. Before performing remote photography, turn the camera on.               |
| Viewing the pictures on the camera (download selected pictures) | Use the smart device to view and download the pictures on the camera. This option is available even when the camera is off. |



### Wi-Fi Connection

When performing remote photography or downloading selected pictures, follow the instructions on the SnapBridge app or smart device to switch from a Bluetooth connection to a Wi-Fi connection.

- When downloading selected pictures, you can upload still images without switching to a Wi-Fi connection, but images will be saved at a size of 2 megapixels. Still images cannot be uploaded at their original size.
- In iOS, if you are prompted for a password when switching to a Wi-Fi connection, input the camera password.

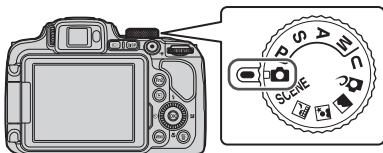
You can check and change the camera password by using **Wi-Fi ➔ Network settings ➔ Password** in the network menu. To protect your privacy, we recommend that you change the password.

# Basic Shooting and Playback Operations



## Shooting Images

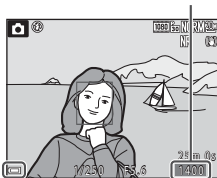
 (auto) mode is used here as an example.  (auto) mode enables you to perform general shooting in a variety of shooting conditions.

### 1 Rotate the mode dial to .



Number of exposures remaining

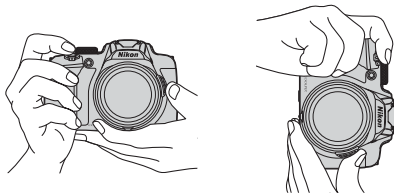
- Battery level indicator  
: The battery level is high.  
: The battery level is low.
- Press the **DISP** (display) button to switch the information displayed on the screen each time.




Battery level indicator

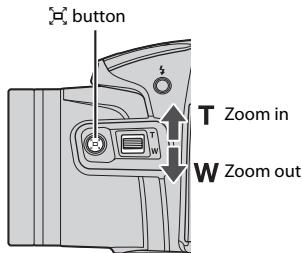
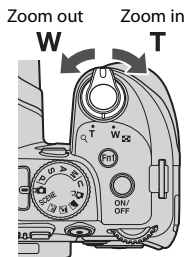
### 2 Hold the camera steady.

- Keep fingers and other objects away from the lens, flash, AF-assist illuminator, microphone, and speaker.



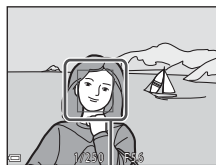
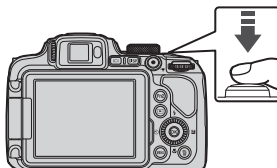
### 3 Frame the picture.

- Move the zoom control or the side zoom control to change the zoom lens position.
- If you lose sight of the subject while shooting with the lens in telephoto position, press the  (snap-back zoom) button to temporarily widen the visible area so that you can frame the subject more easily.



### 4 Press the shutter-release button halfway.

- To press the shutter-release button “halfway” means to press and hold the button at the point where you feel a slight resistance.
- When the subject is in focus, the focus area or focus indicator is displayed in green.
- When you are using digital zoom, the camera focuses in the center of the frame and the focus area is not displayed.
- If the focus area or focus indicator flashes, the camera is unable to focus. Modify the composition and try pressing the shutter-release button halfway again.



Focus area

### 5 Without lifting your finger, press the shutter-release button all the way down.





## ✓ Notes About Saving Images or Movies

The indicator showing the number of exposures remaining or the indicator showing the remaining recording time flashes while images or movies are being saved. **Do not open the battery-chamber/memory card slot cover or remove the battery or memory card** while an indicator is flashing. Doing this could result in loss of data, or in damage to the camera or the memory card.


## ✍ The Auto Off Function

- When no operations are performed for about one minute, the screen turns off, the camera enters standby mode, and then the power-on lamp flashes. The camera turns off after remaining in standby mode for about three minutes.
- To turn the screen back on while the camera is in standby mode, perform an operation such as pressing the power switch or shutter-release button.

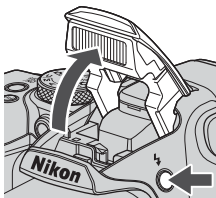
## ✍ When Using a Tripod

- We recommend using a tripod to stabilize the camera in the following situations:
  - When shooting in dim lighting with the flash mode set to  (off)
  - When the zoom is at a telephoto position
- When using a tripod to stabilize the camera during shooting, set **Vibration reduction to Off** in the setup menu ( 20) to prevent potential errors caused by this function.



## Using the Flash

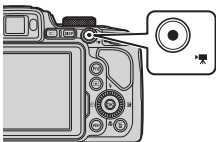
In situations where a flash is needed, such as in dark locations or when the subject is backlit, press the  (flash pop-up) button to raise the flash.

- When not using the flash, gently push to lower the flash until it clicks shut.



## Recording Movies


Display the shooting screen and press the  (movie-record) button to start recording a movie. Press the  button again to end recording.

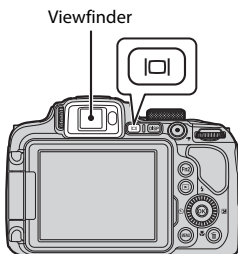




## Switching Between the Monitor and Viewfinder

It is recommended that you use the viewfinder when bright conditions make it difficult to see the monitor, such as when outdoors in sunlight.

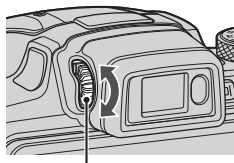
- When you bring your face close to the viewfinder, the eye sensor responds to it and the viewfinder turns on, and the monitor turns off (default setting).
- You can also press the  (monitor) button to switch the display between the monitor and viewfinder.



## Diopter Adjustment of the Viewfinder

When the image in the viewfinder is difficult to see, adjust by rotating the diopter adjustment control while looking through the viewfinder.

- Take care not to scratch your eye with your fingertips or nails.




Diopter adjustment control

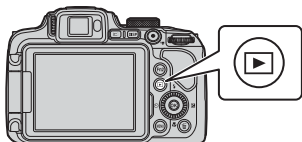
## ✓ Notes About Checking and Adjusting Image Colors

Use the monitor on the back of the camera because the monitor has higher color reproducibility than the viewfinder.






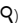
# Playing Back Images

## 1 Press the (playback) button to enter playback mode.

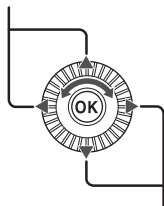
- If you press and hold down the  button while the camera is turned off, the camera turns on in playback mode.



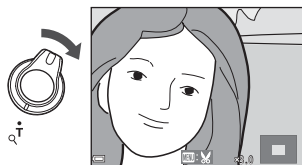
## 2 Use the multi selector to select an image to display.


- Press and hold down    to scroll through the images quickly.
- Images can also be selected by rotating the multi selector.
- Press the **DISP** (display) button to switch the information displayed on the screen each time.
- To play back a recorded movie, press the  button.
- To return to shooting mode, press the  button or shutter-release button.
- Move the zoom control toward **T** () in full-frame playback mode to zoom in on an image.

Display the previous image




Display the next image

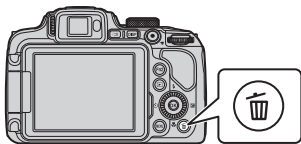





- In full-frame playback mode, move the zoom control toward **W** () to switch to thumbnail playback mode and display multiple images on the screen.



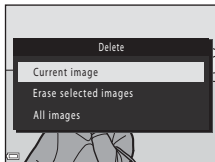
# Deleting Images


- 1 Press the  (delete) button to delete the image currently displayed on the screen.



- 2 Use the multi selector   to select the desired deletion method and press the  button.

- To exit without deleting, press the **MENU** button.



- 3 Select **Yes** and press the  button.




- Deleted images cannot be recovered.



## **Notes About Deleting Images Simultaneously Saved in RAW and JPEG**

When using this camera to delete images captured using **RAW + Fine** or **RAW + Normal** in the **Image quality** setting, both of the simultaneously saved RAW and JPEG images are deleted. You cannot delete only one format.

## **Deleting Images Captured Continuously (Sequence)**

- Images captured continuously are saved as a sequence, and only the first image of the sequence (the key picture) is displayed in playback mode (default setting).
- If you press the  button while a key picture is displayed for a sequence of images, all images in the sequence are deleted.
- To delete individual images in a sequence, press the  button to display them one at a time and press the  button.



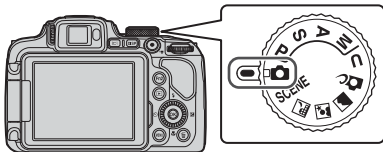
## **Deleting the Image Captured While in Shooting Mode**

When using shooting mode, press the  button to delete the last image that was saved.

# Other Functions

## Selecting a Shooting Mode

You can rotate the mode dial to align the desired shooting mode with the indicator mark on the camera body.



- **📷 (Auto) mode**

Select this mode to perform general shooting in a variety of shooting conditions.

- **SCENE, 🌃, 🌙, and 🌄 (Scene) modes**

Select any one of scene modes based on the shooting conditions, and you can take pictures with the appropriate settings for those conditions.

- **SCENE:** Press the **MENU** button and select a scene mode. When using **Scene auto selector**, the camera recognizes the shooting conditions when you frame a picture, and you can take pictures in accordance with the conditions.
- 🌃 (night landscape): Use this mode to shoot night landscapes.
- 🌙 (night portrait): Use this mode to shoot evening and night portraits that include background scenery.
- 🌄 (landscape): Use this mode to shoot landscapes.

- **🌸 (Creative) mode**

Apply effects to images during shooting.

- **P, S, A, and M modes**

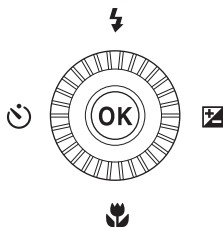
Select these modes for greater control over shutter speed and f-number.

- **U (User settings) mode**

The frequently used settings in **P**, **S**, **A**, and **M** modes can be saved. To shoot with the saved settings, rotate the mode dial to **U**.

# Setting Shooting Functions with the Multi Selector

When the shooting screen is displayed, you can press the multi selector **▲** (⚡) **◀** (⌚) **▼** (🌸) **▶** (📷) to set the functions described below.



- **⚡ Flash mode**

When the flash is raised, the flash mode can be set according to shooting conditions.

- **⌚ Self-timer/Smile timer**

- Self-timer: The shutter is automatically released in 10 or 2 seconds.
- Smile timer: The shutter is automatically released when the camera detects a smiling face.

- **🌸 Focus mode**

According to the distance to the subject, **AF** (autofocus), **🌸** (macro close-up), or **▲** (infinity) can be set. **MF** (manual focus) can be set when the shooting mode is **P**, **S**, **A**, **M**, or **U**, or when the scene mode is **Sports**, **Fireworks show**, **Bird-watching**, **Soft**, **Selective color**, **Multiple exp.** **Lighten**, **Time-lapse movie** (night sky or star trails), or **Superlapse movie**.

- **📷 Exposure compensation**

You can adjust overall image brightness.

The functions that can be set vary depending on the shooting mode.

# Menu Operations

You can set the menus listed below by pressing the **MENU** (menu) button.

- Shooting menu<sup>1,2</sup>
- Movie menu<sup>1</sup>
- Playback menu<sup>3</sup>
- Network menu
- Setup menu

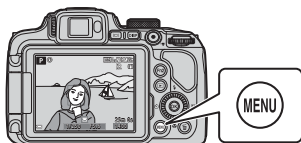
<sup>1</sup> Press the **MENU** button when the shooting screen is displayed.

<sup>2</sup> Menu icons and available setting options vary depending on the shooting mode.

<sup>3</sup> Press the **MENU** button when the playback screen is displayed.

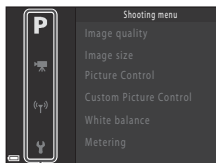
## 1 Press the **MENU** (menu) button.

- The menu is displayed.



## 2 Press the multi selector ◀.

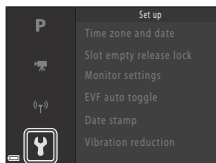
- The current menu icon is displayed in yellow.



Menu icons

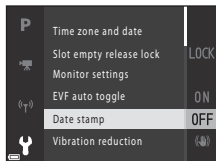
## 3 Select a menu icon and press the **OK** button.

- The menu options become selectable.



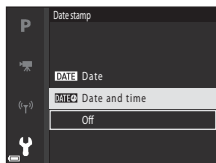
## 4 Select a menu option and press the **OK** button.

- Certain menu options cannot be set depending on the current shooting mode or the state of the camera.
- Items can also be selected by rotating the multi selector.



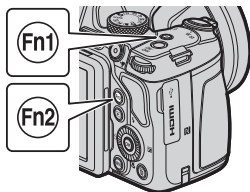
## 5 Select a setting and press the **OK** button.

- The setting you selected is applied.
- When you are finished using the menu, press the **MENU** button.
- When a menu is displayed, you can switch to shooting mode by pressing the shutter-release button or **●** (**PAUSE**) button.



## Using the Fn1 (Function 1)/Fn2 (Function 2) Buttons

If you press the **Fn1** button or **Fn2** button in **P**, **S**, **A**, **M**, or **U** mode, you can quickly configure the pre-saved menu options (default setting is **Continuous**). To set a different menu option, select the **Fn** button and select the desired menu option.



# Technical Notes

## Notices

### Notices for Customers in the U.S.A.

#### **IMPORTANT SAFETY INSTRUCTIONS - SAVE THESE INSTRUCTIONS.**

#### **DANGER - TO REDUCE THE RISK OF FIRE OR ELECTRIC SHOCK, CAREFULLY FOLLOW THESE INSTRUCTIONS**

For connection to a supply not in the U.S.A., use an attachment plug adapter of the proper configuration for the power outlet if needed.

The power supply unit is intended to be correctly orientated in a vertical or floor mount position.

#### **Federal Communications Commission (FCC) Radio Frequency Interference Statement**

This equipment has been tested and found to comply with the limits for a Class B digital device, pursuant to Part 15 of the FCC rules. These limits are designed to provide reasonable protection against harmful

interference in a residential installation. This equipment generates, uses, and can radiate radio frequency energy and, if not installed and used in accordance with the instructions, may cause harmful interference to radio communications. However, there is no guarantee that interference will not occur in a particular installation. If this equipment does cause harmful interference to radio or television reception, which can be determined by turning the equipment off and on, the user is encouraged to try to correct the interference by one or more of the following measures:

- Reorient or relocate the receiving antenna.
- Increase the separation between the equipment and receiver.
- Connect the equipment into an outlet on a circuit different from that to which the receiver is connected.
- Consult the dealer or an experienced radio/television technician for help.

#### **CAUTIONS**

##### **Modifications**

The FCC requires the user to be notified that any changes or modifications made to this device that are not expressly approved by Nikon Corporation may void the user's authority to operate the equipment.



**Nikon**

**COOLPIX B700**



## **Interface Cables**

Use the interface cables sold or provided by Nikon for your equipment. Using other interface cables may exceed the limits of Class B Part 15 of the FCC rules.

## **Notice for Customers in the State of California**

### **WARNING**

Handling the cord on this product will expose you to lead, a chemical known to the State of California to cause birth defects or other reproductive harm.

### **Wash hands after handling.**

Nikon Inc.,

1300 Walt Whitman Road, Melville, New York 11747-3064, U.S.A.

Tel: 631-547-4200

## **Notice for Customers in Canada**

CAN ICES-3 B / NMB-3 B

# Notes About Wireless Communication Functions

## Restrictions on Wireless Devices

The wireless transceiver included in this product conforms to wireless regulations in the country of sale and is not for use in other countries (products purchased in the EU or EFTA can be used anywhere within the EU and EFTA). Nikon does not accept liability for use in other countries. Users who are unsure as to the original country of sale should consult with their local Nikon service center or Nikon-authorized service representative. This restriction applies to wireless operation only and not to any other use of the product.

## Security

Although one of the benefits of this product is that it allows others to freely connect for the wireless exchange of data anywhere within its range, the following may occur if security is not enabled:

- Data theft: Malicious third-parties may intercept wireless transmissions to steal user IDs, passwords, and other personal information.
- Unauthorized access: Unauthorized users may gain access to the network and alter data or perform other malicious actions. Note that due to the design of wireless networks, specialized attacks may allow unauthorized access even when security is enabled. Nikon is not responsible for data or information leaks that may occur during data transfer.
- Do not access networks that you are not permitted to use, even if they are displayed on your smartphone or tablet. Doing so may be regarded as unauthorized access. Only access networks that you are permitted to use.

## Personal Information Management and Disclaimer

- User information registered and configured on the product, including wireless LAN connection settings and other personal information, is susceptible to alteration and loss resulting from operational error, static electricity, accident, malfunction, repair or other handling. Always keep separate copies of important information. Nikon is not responsible for any direct or indirect damages or lost profits resulting from alteration or loss of content that is not attributable to Nikon.
- Before discarding this product or transferring it to another owner, perform **Reset all** in the setup menu (📖20) to delete all user information registered and configured with the product, including wireless LAN connection settings and other personal information.
- Nikon is not responsible for any damages resulting from unauthorized use of this product by third parties in the event that the product is stolen or lost.

## **Precautions when Exporting or Carrying This Product Abroad**

This product is controlled by the United States Export Administration Regulations (EAR). The permission of the United States government is not required for export to countries other than the following, which as of this writing are subject to embargo or special controls: Cuba, Iran, North Korea, Sudan, and Syria (list subject to change).

## **Notice for Customers in the U.S.A. and Canada**

### **Federal Communications Commission (FCC) and Industry of Canada (IC)**

#### **Declaration of Conformity**

This device complies with Part 15 of FCC Rules and Industry Canada licence-exempt RSS standard(s). Operation is subject to the following two conditions: (1) this device may not cause interference, and (2) this device must accept any interference, including interference that may cause undesired operation of this device.

#### **FCC/IC RF Exposure Statement**

This transmitter must not be co-located or operated in conjunction with any other antenna or transmitter.

The available scientific evidence does not show that any health problems are associated with using low power wireless devices. There is no proof, however, that these low power wireless devices are absolutely safe. Low power wireless devices emit low levels of radio frequency energy (RF) in the microwave range while being used. Whereas high levels of RF can produce health effects (by heating tissue), exposure of low-level RF that does not produce heating effects causes no known adverse health effects. Many studies of low-level RF exposures have not found any biological effects. Some studies have suggested that some biological effects might occur, but such findings have not been confirmed by additional research.

COOLPIX B700, which is equipped with a TYPE1FJ (FCC ID:VPYLB1FJ / IC ID:772C-LB1FJ) Wireless LAN Module, has been tested and found to comply with FCC/IC radiation exposure limits set forth for an uncontrolled environment and meets the FCC radio frequency (RF) Exposure Guidelines in Supplement C to OET65 and RSS-102 of the IC radio frequency (RF) Exposure rules. Please refer to the SAR test report that was uploaded to FCC website.

## **Notice for Customers in Jamaica**

This product contains a Type Approved Module by Jamaica: "SMA – TYPE1FJ"

## Caring for the Product

Observe the precautions described below in addition to the warnings in "For Your Safety" (㉑viii-x) when using or storing the device.

### The Camera

#### Do Not Apply Strong Impact to the Camera

The product may malfunction if subjected to strong shock or vibration. In addition, do not touch or apply force to the lens.

#### Keep Dry

The device will be damaged if immersed in water or subjected to high humidity.

#### Avoid Sudden Changes in Temperature

Sudden changes in temperature, such as when entering or leaving a heated building on a cold day, can cause condensation to form inside the device. To prevent condensation, place the device in a carrying case or a plastic bag before exposing it to sudden changes in temperature.

#### Keep Away from Strong Magnetic Fields

Do not use or store this device in the vicinity of equipment that generates strong electromagnetic radiation or magnetic fields. Doing so could result in loss of data or camera malfunction.

#### Do Not Point the Lens at Strong Light Sources for Extended Periods

Avoid pointing the lens at the sun or other strong light sources for extended periods when using or storing the camera. Intense light may cause the image sensor to deteriorate or produce a white blur effect in photographs.

#### Turn the Product Off Before Removing or Disconnecting the Power Source or Memory Card

Do not remove the battery while the product is on, or while images are being saved or deleted. Forcibly cutting power in these circumstances could result in loss of data or in damage to the memory card or internal circuitry.

## Notes About the Monitor

- Monitors (including electronic viewfinders) are constructed with extremely high precision; at least 99.99% of pixels are effective, with no more than 0.01% being missing or defective. Hence while these displays may contain pixels that are always lit (white, red, blue, or green) or always off (black), this is not a malfunction and has no effect on images recorded with the device.
- Images in the monitor may be difficult to see under bright lighting.
- Do not apply pressure to the monitor, as this could cause damage or malfunction. Should the monitor break, care should be taken to avoid injury caused by broken glass and to prevent the liquid crystal from the display touching the skin or entering the eyes or mouth.

## The Battery

### Precautions for Use

- Note that the battery may become hot after use.
- Do not use the battery at ambient temperatures below 0°C (32°F) or above 40°C (104°F) as this could cause damage or malfunction.
- If you notice any abnormalities such as excessive heat, smoke, or an unusual smell coming from the battery, immediately discontinue use and consult your retailer or Nikon-authorized service representative.
- After removing the battery from the camera or optional battery charger, put the battery in a plastic bag, etc. in order to insulate it.

### Charging the Battery

Check the battery level before using the camera and replace or charge the battery if necessary.

- Charge the battery indoors with an ambient temperature of 5°C to 35°C (41°F to 95°F) before use.
- A high battery temperature may prevent the battery from charging properly or completely, and may reduce battery performance. Note that the battery may become hot after use; wait for the battery to cool before charging.  
When charging the battery inserted into this camera using the Charging AC Adapter or a computer, the battery is not charged at battery temperatures below 0°C (32°F) or above 50°C (122°F).
- Do not continue charging once the battery is fully charged as this will result in reduced battery performance.
- The battery temperature may increase during charging. However, this is not a malfunction.

### Carrying Spare Batteries

Whenever possible, carry fully charged spare batteries when taking pictures on important occasions.

### Using the Battery When Cold

On cold days, the capacity of batteries tends to decrease. If an exhausted battery is used at a low temperature, the camera may not turn on. Keep spare batteries in a warm place and exchange as necessary. Once warmed, a cold battery may recover some of its charge.

## Battery Terminals

Dirt on the battery terminals may prevent the camera from functioning. Should the battery terminals become dirty, wipe them off with a clean, dry cloth before use.

## Charging an Exhausted Battery

Turning the camera on or off while an exhausted battery is inserted in the camera may result in reduced battery life. Charge the exhausted battery before use.

## Storing the Battery

- Always remove the battery from the camera or optional battery charger when it is not being used. Minute amounts of current are drawn from the battery while it is in the camera, even when not in use. This may result in excessive battery drain and complete loss of function.
- Recharge the battery at least once every six months and completely exhaust it before returning it to storage.
- Put the battery in a plastic bag, etc. in order to insulate it and store it in a cool place. The battery should be stored in a dry location with an ambient temperature of 15°C to 25°C (59°F to 77°F). Do not store the battery in hot or extremely cold locations.


## Battery Life

A marked drop in the time a fully charged battery retains its charge, when used at room temperature, indicates that the battery needs to be replaced. Purchase a new battery.

## Recycling Used Batteries

Replace the battery when it no longer holds a charge. Used batteries are a valuable resource. Please recycle used batteries in accordance with local regulations.

## The Charging AC Adapter

- The EH-73P Charging AC Adapter is for use only with compatible devices. Do not use with another make or model of device.
- Do not use any USB cable other than the UC-E21. Using a USB cable other than the UC-E21 could result in overheating, fire or electric shock.
- Do not, under any circumstances, use another make or model of AC adapter other than the EH-73P Charging AC Adapter, and do not use a commercially available USB-AC adapter or a battery charger for a mobile phone. Failure to observe this precaution could result in overheating or in damage to the camera.
- The EH-73P is compatible with AC 100–240 V, 50/60 Hz electrical outlets. When using in other countries, use a plug adapter (commercially available) as necessary. For more information about plug adapters, consult your travel agency.
- The symbols on this product represent the following:  
~ AC, == DC,  Class II equipment (The construction of the product is double-insulated.)

# Cleaning and Storage

## Cleaning

Do not use alcohol, thinner, or other volatile chemicals.

|                     |   |
|---------------------|---|
| Lens/<br>viewfinder | Avoid touching glass parts with your fingers. Remove dust or lint with a blower (typically a small device with a rubber bulb attached to one end that is pumped to produce a stream of air out the other end). To remove fingerprints or other stains that cannot be removed with a blower, wipe the lens with a soft cloth, using a spiral motion that starts at the center of the lens and working toward the edges. If this fails, clean the lens using a cloth lightly dampened with commercial lens cleaner. |
| Monitor             | Remove dust or lint with a blower. To remove fingerprints and other stains, clean the monitor with a soft, dry cloth, being careful not to apply pressure.  |
| Body                | Use a blower to remove dust, dirt, or sand, then wipe gently with a soft, dry cloth. After using the camera at the beach or other sandy or dusty environment, wipe off any sand, dust, or salt with a dry cloth lightly dampened with fresh water and dry thoroughly. <b>Note that foreign matter inside the camera could cause damage not covered by the warranty.</b>   |

## Storage

Remove the battery if the camera will not be used for an extended period. To prevent mold or mildew, take the camera out of storage at least once a month.

Turn the camera on and release the shutter a few times before putting the camera away again. Do not store the camera in any of the following locations:

- Places that are poorly ventilated or subject to humidity of over 60%
- Exposed to temperatures above 50°C (122°F) or below -10°C (14°F)
- Next to equipment that produces strong electromagnetic fields, such as televisions or radios

For storing the battery, follow the precautions in “The Battery” (📖27) in “Caring for the Product” (📖26).

# Troubleshooting

If the camera fails to function as expected, check the list of common problems below before consulting your retailer or Nikon-authorized service representative.

Also, refer to the Reference Manual (PDF format) for further details on how to use this camera (📖iv).

| Problem                                | Cause/Solution   | 📖                            |
|--|--|------------------------------|
| The camera is on but does not respond. | <ul style="list-style-type: none"> <li>Wait for recording to end.</li> <li>If the problem persists, turn the camera off. If the camera does not turn off, remove and reinsert the battery or batteries or, if you are using an AC adapter, disconnect and reconnect the AC adapter. Note that although any data currently being recorded will be lost, data that have already been recorded will not be affected by removing or disconnecting the power source.</li> </ul>   | –                            |
| The camera cannot be turned on.        | The battery is exhausted.  | 3, 4, 27                     |
| The camera turns off without warning.  | <ul style="list-style-type: none"> <li>The camera automatically turns off to save power (auto off function).</li> <li>The camera and battery may not work properly at low temperatures.</li> <li>The inside of the camera has become hot. Leave the camera off until the inside of the camera has cooled, and then try turning it on again.</li> </ul>   | 14<br>27<br>–                |
| The monitor or viewfinder is blank.    | <ul style="list-style-type: none"> <li>The camera is off.</li> <li>The battery is exhausted.</li> <li>The camera automatically turns off to save power (auto off function).</li> <li>You cannot turn on both the monitor and viewfinder at the same time. It may take a while to switch between the monitor and viewfinder.</li> <li>The camera is connected to a TV or computer.</li> <li>Interval timer shooting, <b>Multiple exp. Lighten</b> scene mode (when <b>Star trails</b> is set) shooting, or time-lapse movie shooting is in progress.</li> </ul> | 6<br>12<br>14<br>–<br>–<br>– |
| The camera becomes hot.                | The camera may become hot when used for an extended period of time such as to shoot movies, or when used in a hot environment; this is not a malfunction.  | –                            |



## Memory Cards That Can Be Used

The camera supports SD, SDHC, and SDXC memory cards.

- The camera supports UHS-I.
- Memory cards with an SD Speed Class rating of 6 or faster are recommended for recording movies (when recording 4K UHD movies at an image size/frame rate of **2160/30p** or **2160/25p**, cards rated UHS Speed Class 3 or faster are recommended). When using a memory card with a lower Speed Class rating, movie recording may stop unexpectedly.
- If you use a card reader, make sure that it is compatible with your memory card.
- Contact the manufacturer for information on features, operation, and limitations on use.

---

## Trademark Information

- Windows is either a registered trademark or trademark of Microsoft Corporation in the United States and/or other countries.
- The *Bluetooth*® word mark and logos are registered trademarks owned by Bluetooth SIG, Inc. and any use of such marks by Nikon Corporation is under license.
- Apple®, App Store®, the Apple logos, Mac, OS X, iPhone®, iPad®, iPod touch® and iBooks are trademarks or registered trademarks of Apple Inc., in the U.S. and other countries.
- Android and Google Play are trademarks or registered trademarks of Google Inc. The Android robot is reproduced or modified from work created and shared by Google and used according to terms described in the Creative Commons 3.0 Attribution License.
- iOS is a trademark or registered trademark of Cisco Systems, Inc., in the United States and/or other countries and is used under license.
- Adobe, the Adobe logo, and Reader are either trademarks or registered trademarks of Adobe Systems Incorporated in the United States and/or other countries.
- SDXC, SDHC, and SD Logos are trademarks of SD-3C, LLC.



- PictBridge is a trademark.
- HDMI, HDMI logo and High-Definition Multimedia Interface are trademarks or registered trademarks of HDMI Licensing, LLC.



- Wi-Fi and the Wi-Fi logo are trademarks or registered trademarks of the Wi-Fi Alliance.
- The N-Mark is a trademark or registered trademark of NFC Forum, Inc. in the United States and in other countries.
- All other trade names mentioned in this manual or the other documentation provided with your Nikon product are the trademarks or registered trademarks of their respective holders.

“Made for iPod,” “Made for iPhone,” and “Made for iPad” mean that an electronic accessory has been designed to connect specifically to iPod, iPhone, or iPad, respectively, and has been certified by the developer to meet Apple performance standards. Apple is not responsible for the operation of this device or its compliance with safety and regulatory standards. Please note that the use of this accessory with iPod, iPhone, or iPad may affect wireless performance.

## AVC Patent Portfolio License

This product is licensed under the AVC Patent Portfolio License for the personal and non-commercial use of a consumer to (i) encode video in compliance with the AVC standard (“AVC video”) and/or (ii) decode AVC video that was encoded by a consumer engaged in a personal and non-commercial activity and/or was obtained from a video provider licensed to provide AVC video. No license is granted or shall be implied for any other use. Additional information may be obtained from MPEG LA, L.L.C.

See <http://www.mpegla.com>.

## FreeType License (FreeType2)

Portions of this software are copyright © 2012 The FreeType Project (<http://www.freetype.org>). All rights reserved.

## MIT License (HarfBuzz)

Portions of this software are copyright © 2016 The HarfBuzz Project (<http://www.freedesktop.org/wiki/Software/HarfBuzz>). All rights reserved.



A series of horizontal dashed lines spanning the width of the page, providing a guide for handwriting practice.

No reproduction in any form of this manual, in whole or in part (except for brief quotation in critical articles or reviews), may be made without written authorization from NIKON CORPORATION.

**NIKON CORPORATION**

© 2016 Nikon Corporation



CT7B04(11)  
6MN66011-04