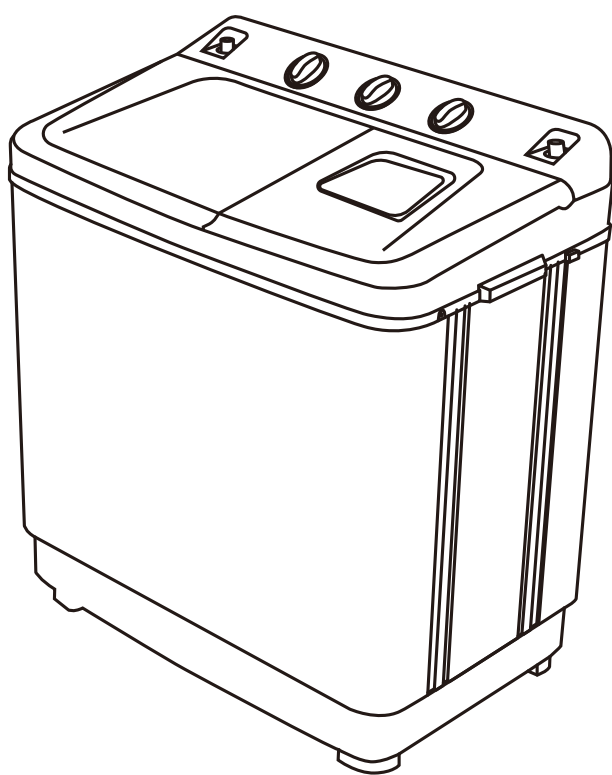


黑白印刷

140*210mm

Washing Machine

Instruction Manual

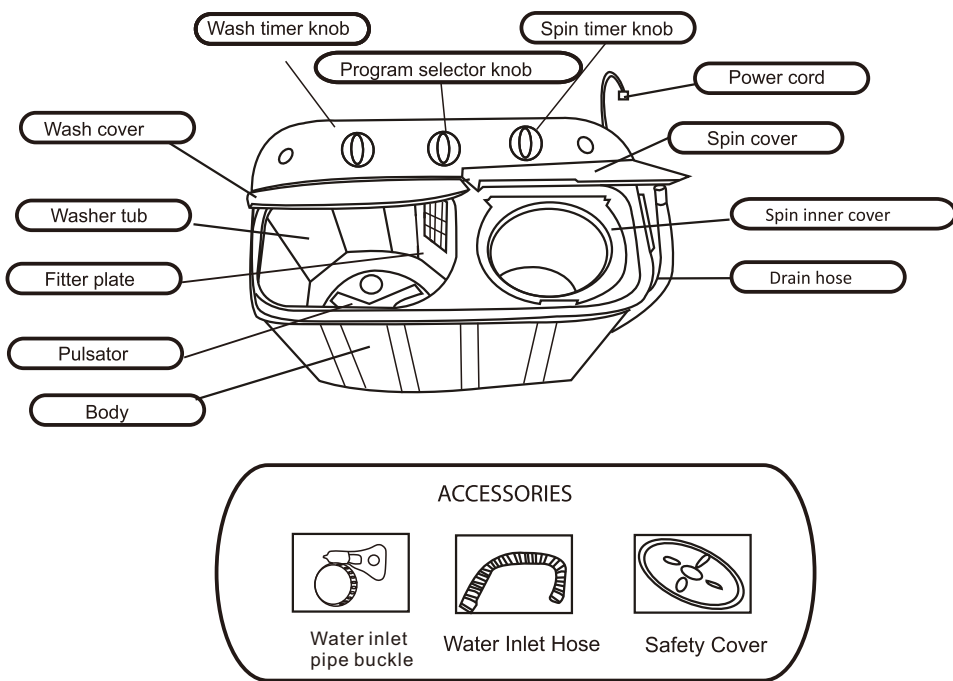


XPB70-108S-2

THIS INSTRUCTION BOOKLET CONTAINS IMPORTANT SAFETY INFORMATION.
PLEASE READ AND KEEP FOR FUTURE REFERENCE.

Parts List And Diagram

Name of parts



FUNCTION AND FEATURE

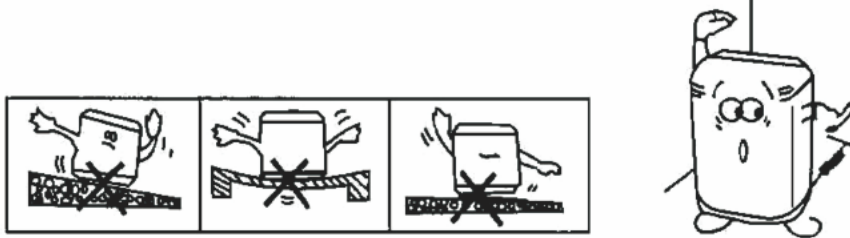
Perfect design and full model, equipped with plastic and aluminum alloy body, so that the washing machine will not rust during washing; the design of double water flow and hand wheel allow the clothes to be cleaned more effectively. Washing with three water streams, the dish-shaped wave forms a new water stream, which makes the clothes unwound; it is highly clean and reduces wear. It dissolves washing powder faster than ordinary double-tube washing machines and has higher cleanliness. Full-featured and very quiet, the hand wheel will not easily wear down.

2

Installation

Install it on the Firm and Smooth Ground

- ★ Washing machine should be installed on the firm and smooth ground, 2° bevel is allowed.
- ★ The position of the washing machine should be 5cm from the wall.



Connect the intake pipe method

- ★ Put the intake pipe correctly.
- ★ Put the affusion spigot into the affusion hole.



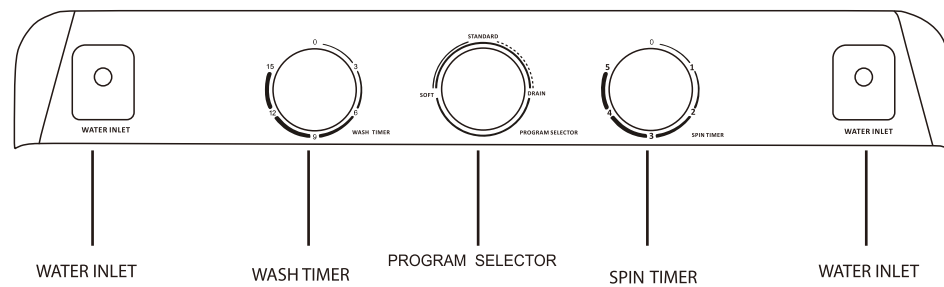
Before Washing

1. Take out the coin, nails or other things from the garments.	2. Do not put clothes containing chemical reagents with other ordinary clothes.
3. Turn out the inside cloth during washing the garments with the floss.	4. Put the good garments into the pocket during washing.

3

Washing Operation Method

Connect the intake pipe with the water spigot.	Put the wire into the plug.
Put down the drain pipe.	Put the garments into the washing tube then put into the wash powder.
★ Choose the water level according to the quantity of the garments, high, middle and low. ★ For the water level of the double water stream, it is better to use the middle and high gear.	



- Choose the washing method (Turn "PROGRAM SELECTOR" switch)



Turn the current transform switch according to the quantity and the material of the garments, then choose the washing current in "SOFT, STANDARD".

- Choose the washing time (Turn "SPIN TIMER" dial)

Turn the washing timer in sequence when the water reaches the level, then the washing machine will begin to work.

4

Washing Operation Method

Choose the wash method	Soft	Standard
Garment types	Silk or floss clothing	Linen or very dirty garments
Washing time	3-5 min	5-9 min 9-15 min
Water level	Quantities of the wash powder	
High	40-57 g	
Middle	30-48 g	
Low	25-40 g	
<div>● Drain </div> <p>When finish washing, turn the current transform to the drain position and then the machine begins to drain.</p> <div>● Choose the drying time </div> <ul style="list-style-type: none">★ When finish draining, move the garments into the drying tube then cover the lid on the garments.★ Cover the drying inside lid and the drying cover.★ Turn the drying timer in sequence and the washing machine begins to work.		
Sort of the garments	Drying time	
Shirt (synthetic fibre)	1-2 min	
Underwear	3-5 min	
Work clothes	5min	

Second Washing

- ★ Perform the washing procedure twice, wash, drying and then repeat the steps.
- ★ Start the second washing after draining, which can save electricity and water at the same time.

Second Washing While Affusion

Perform the washing procedure for two times, open the water spigot and then affusion the water into the washing tube.

5

Drain Notice

- ★ Press well the plastic cover on the garments strike the machine while drying.
- ★ Do not dry the clothes when draining, drain the clothes before moving them into the drying tube to avoid damage to the machine.

- ★ Tighten the plastic cover of the dehydrator to prevent the clothes from being thrown out of the tube.
- ★ Never put the hands into the drying tube while it is working, especially children.

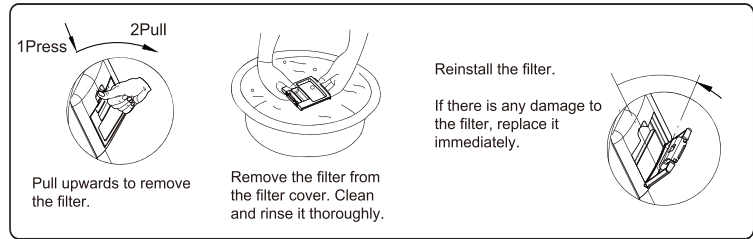


After Washing

Pull down the plug, close the water spigot and then hang up the drain pipe. Clean the drying tube and open the plastic cover to make tube dry.

Clean The Filtrate Netting

Please clean the filtrate netting after washing every time.



After washing

Don't install it in the bath-room and other inclined ground.	Don't pour the water on the switch.
When you use warm water, the temperature should not exceed 50 centigrade.	Never use gasoline, alcohol and other organic solvent to brush the machine.

6

- ★ Please pull down the plug after washing.

- ★ The length of the drain pipe must always be less than 2m, and the height must exceed 1m.

- ★ Don't press the drain outlet into the sewer.

- ★ If you want to change the wire, please change it in the local company.

- ★ If there is a water inlet at the bottom, the foot cloth should not support the water inlet.

- ★ This appliance is not intended for use by persons (including children) with reduced physical, sensory or mental capabilities, unless they have been given supervision or instruction concerning use of the appliance by a person responsible for their safety.

- ★ Children should be supervised to ensure that they do not play with the appliance.

- ★ If the supply cord is damaged, it must be replaced by the manufacturer, its service agent or similarly qualified persons in order to avoid a hazard.

- ★ This appliance can be used by children aged from 8 years and above and persons with reduced physical, sensory or mental capabilities or lack of experience and knowledge if they have been given supervision or instruction concerning use of the appliance in a safe way and understand the hazards involved. Children shall not play with the appliance. Cleaning and user maintenance shall not be made by children without supervision.

- ★ Children of less than 3 years should be kept away unless continuously supervised.

7

Produce informacion

XPB70-108S-2

Rated voltage and frequency	110V/60Hz
Rated capacity of wash and spin	4.1 CUFT
Inlet pressure	0.03MPa~0.85MPa
Rated input power	Wash 360W
Rated input power	Spin 180W
Water Proof Class	IPX4

NOTE:

To continuously improve its products, we reserve the right to modify this information without prior notification.

For any questions during assembly, please watch the video in the product page for reference. Or contact our customer service with any questions, comments, or concerns. Thank you for using our products in your home!

Thank You!

MADE IN CHINA