

Nikon

DIGITAL CAMERA

COOLPIX W100


Quick Start Guide



Connect to a Smartphone 2

Introduction 4

Get Ready 9

 Shoot 17

 View 19

Have More Fun 21

For Your Safety 25

Technical Notes 43

En

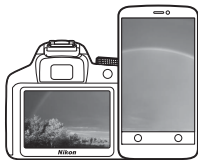
CAUTION

There are important notes about the waterproofing from pages 32 to 35.

Make sure that you read them carefully.



SnapBridge



Your images. The world. Connected

Welcome to SnapBridge — Nikon's new family of services to enrich your image experience. SnapBridge eliminates the barrier between your camera and compatible smart device, through a combination of *Bluetooth®* low energy (BLE) technology and a dedicated app. The stories you capture with your Nikon camera and lenses are automatically transferred to the device as they are taken. They can even be uploaded effortlessly to cloud storage services, inviting access across all your devices. You can share your excitement, when and where you want.

* Wireless communication is not available when the camera is underwater.

Download the SnapBridge app to get started!

Take advantage of the wide-ranging convenience by downloading the SnapBridge app onto your smart device now. Through a few simple steps, this app connects your Nikon cameras with a compatible iPhone®, iPad® and/or iPod touch® or smart devices running on the Android™ operating system. The app is available free from the website (<http://snapbridge.nikon.com>), Apple App Store® and Google Play™.

For the latest information on SnapBridge, visit the Nikon website for your area (page 25).



Download on the
App Store



ANDROID APP ON

Google Play

COOLPIX W100 Model Name: N1530

2 Connect to a Smartphone

The exciting image experience that SnapBridge offers...



Automatic picture transfer from camera to smart device thanks to the constant connection between the two devices — making online photo sharing easier than ever

NIKON IMAGE SPACE



Upload of photos and thumbnail images to the NIKON IMAGE SPACE cloud service

A range of services that enriches your imaging life, including:

- Camera remote control
- Imprinting up to two pieces of credit information (e.g. copyright, comments, text and logos) on pictures
- Automatic update of camera's date and time info and location info
- Receive camera's firmware updates



See from page 11 onwards for information on setting or using SnapBridge.

Introduction

Read “For Your Safety” (pages 25-42) and all other instructions carefully with an adult before using your camera. Keep this manual where it will be read by all who use the camera.

Do the instructions in “Get Ready” (page 9-16) with an adult.

Downloading the “Reference Manual”

The Reference Manual (PDF format) provides more details in various languages on how to use this camera. Use your smart device or computer to refer to it along with this manual. Download the Reference Manual from our Download Center at the URL below.

- The Reference Manual can be viewed using Adobe PDF Reader, iBooks, or other software. Adobe PDF reader can be downloaded from the Adobe website.

Downloading “ViewNX-i”

ViewNX-i is free software that enables you to transfer images and movies to your computer for viewing and editing. Download the software from our Download Center at the URL below.

Visit Our Download Center

Visit the website below to download the Reference Manual and software for this camera.

<http://downloadcenter.nikonimglib.com>



Scan this image with your smart device's QR code reader.

Nikon User Support

Should you need technical support, we offer a number of options.

Internet

For customers in the United States: www.nikonusa.com

For customers in Canada: www.nikon.ca (English), fr.nikon.ca (Français)

For customers in Mexico: www.nikon.com.mx

For customers in Brazil: www.nikon.com.br

Telephone

For customers in the United States: **1-800-NIKON-US (1-800-645-6687)**

For customers in Canada: **1-877-534-9910**

For customers in Mexico: **001-888-565-5452**

For customers in Brazil: **0800-886-4566 (0800-88 NIKON)**

Confirming the Package Contents

In the event that any items are missing, please contact the store where you purchased the camera.

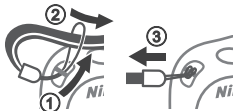
☐ COOLPIX W100
Digital Camera



☐ Camera Strap¹



(How to attach)



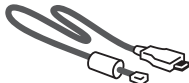
☐ EN-EL19 Rechargeable
Li-ion Battery



☐ EH-73P Charging AC
Adapter²



☐ UC-E21 USB Cable



☐ Brush³



☐ Quick Start Guide (this manual)

☐ Warranty

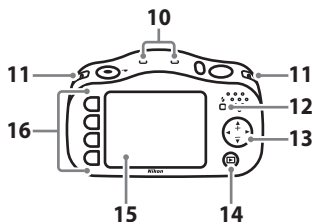
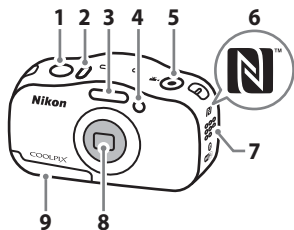
¹ Do not swing the camera by the strap. The camera could strike objects or people causing injury and damage to the camera.

² A plug adapter is included if the camera was purchased in a country or region that requires a plug adapter. The shape of the plug adapter varies with the country or region of purchase (page 9).

³ The brush is used for cleaning the waterproof packing.

- Accessories are not waterproof.
- A memory card is not included with the camera. SD, SDHC, and SDXC memory cards are referred to as "memory cards" in this manual.

Parts of the Camera



1 Shutter-release button

2 Power switch/
power-on lamp

3 Flash

4 AF-assist illuminator/
self-timer lamp

5 ● (movie-record) button

6 N-Mark (NFC antenna)

7 Speaker

8 Lens


9 Battery-chamber/
memory card slot cover

10 Microphone

11 Eyelet for camera strap

12 Charge lamp/flash lamp

13 Multi selector

14  (shooting/playback
mode) button



15 Monitor (Screen)

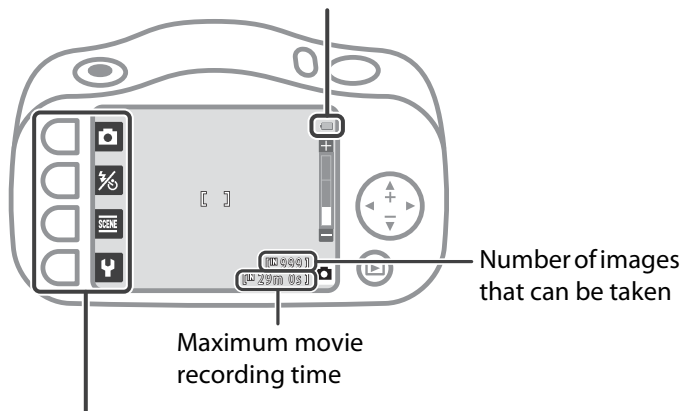
16 Flexible buttons*

* In this document, the flexible buttons are sometimes referred to as “flexible button 1” through “flexible button 4”, in order from top to bottom.

Using the Monitor

Battery level

- : The battery has enough power remaining.
- : The battery level is low.

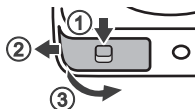


Flexible buttons

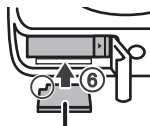
Press to select an item shown on the screen.



Inserting the Battery and Memory Card



Battery

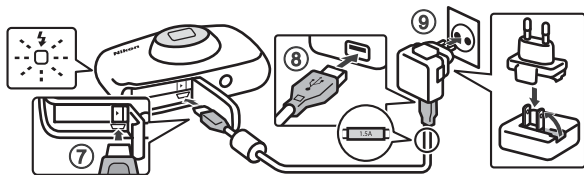


Memory card

- Look at the stickers and insert the battery and memory card the right way.
- The first time you insert a memory card that has been used in another device into this camera, make sure to format it with this camera.

Charging the Battery

- 1 Connect the camera to the Charging AC Adapter and to the electrical outlet.



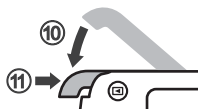
If a plug adapter* is included with your camera, securely connect it to the Charging AC Adapter. Once the two are connected, attempting to forcibly remove the plug adapter could damage the product.

- * The shape of the plug adapter varies according to the country or region in which the camera was purchased. This step can be omitted if the plug adapter comes permanently bonded to the Charging AC Adapter.

- The battery starts charging, and the charge lamp flashes.
- When the battery is fully charged, the charge lamp turns off.
- Disconnect the Charging AC Adapter from the electrical outlet and then disconnect the cable.

2 Close the cover.

- Lay the cover completely flat in the direction indicated by the arrow ⑩, and fully slide it in ⑪.



✓ Notes About Opening and Closing the Cover

- Make sure the camera and your hands are not wet.
- Make sure that there is no debris, etc. inside the battery-chamber/memory card slot cover.
- Make sure that the battery-chamber/memory card slot cover is firmly closed.

✓ Notes About Charging and Replacing the Battery

- Only an adult should charge and replace the battery.
- Do not use any USB cable other than the UC-E21. Doing so could result in overheating, fire or electric shock.
- Check the shape and direction of the plugs and do not insert or remove the plugs at an angle.
- Do not, under any circumstances, use another make or model of AC adapter other than EH-73P Charging AC Adapter, and do not use a commercially available USB-AC adapter or a battery charger for a mobile phone. Failure to observe this precaution could result in overheating or in damage to the camera.
- Refer to the information in “For Your Safety” (page 27) and “Caring for the Product” (page 38).

Setting the Camera

You can set the camera with or without using a smartphone or tablet.

Setup from a Smartphone or Tablet

- Before setting the camera, install the SnapBridge app (page 2) and enable Bluetooth and Wi-Fi on your smartphone or tablet (called “smart device” from this point on).
- The screens of the camera and smart device may be different from the actual screens.



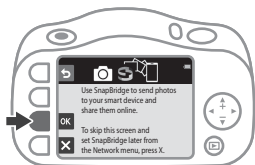
- ① Press the power switch to turn on the camera.



- ② Press ◀ or ▶ on the multi selector to highlight a language and press **OK**.



- ③ Press **OK** when the dialog at right is displayed.




4 Pair (i.e., establish a Bluetooth link between) the camera and the smart device.

- Here, connecting the camera and a smart device wirelessly through Bluetooth is called “pairing.”

• **Android Devices with NFC Support**

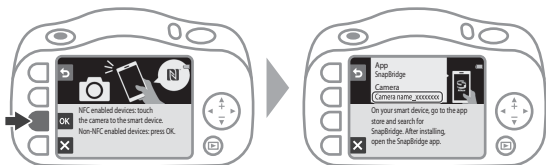
After checking that NFC is enabled on the smart device, touch the camera

 (N-Mark) to the NFC antenna on the smart device to start the SnapBridge app.

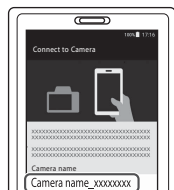


• **iOS Devices and Android Devices Without NFC Support**

- Press **OK**. The camera will wait for a connection.

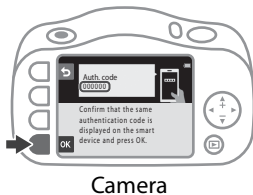


- Start the SnapBridge app on the smart device, and follow the on-screen instructions to tap the name of the camera.



5 Check the authentication code.

- After checking that the camera and smart device display the same six-digit authentication code, and then follow the steps below (note that the code may not be displayed in some versions of iOS, but you should follow the steps below even if the code is not displayed).
 - On the camera, press **OK**.
 - On the smart device, tap **Pairing** (the name of the button may be different depending on the smart device).



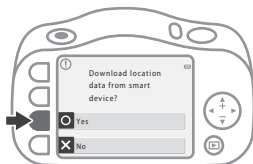
6 Press ➤ when the dialog at right is displayed.

- If the camera displays **Could not connect.**, press **↻ Reconnect** to return to step 4. To cancel pairing settings, press **✕Cancel**.



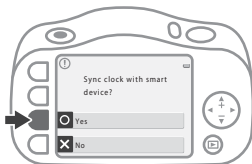
7 Select whether to add shooting location information to the images that you take.

- To add location data to images, select **○Yes**. Turn on the location data features in the SnapBridge app and on the smart device (for more information, see the instructions included with the smart device).



8 Select a camera clock setting.

- If you select **Yes**, the time is automatically set to match the smart device. Turn on time syncing in the SnapBridge app.
- If you select **No**, set from step 4 (page 15) in “Setup from the Camera Menus”.



9 Confirm the messages about the waterproofing and press ►.

- There are seven message screens.



10 Confirm the message on the screen shown at right and press **OK**.

- The shooting screen is displayed.



Using a Smart Device for Other Settings

You can use various SnapBridge app features if you pair the camera with a smart device.

See “What SnapBridge Can Do for You” in the “Reference Manual” for details (page 4).

Setup from the Camera Menus

The camera clock can be set manually.

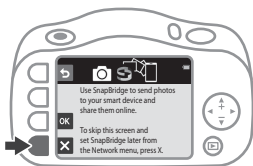
- 1 Press the power switch to turn on the camera.



- 2 Press ◀ or ▶ on the multi selector to highlight a language and press **OK**.



- 3 Press **X** when the dialog at right is displayed.



- 4 Press **O**Yes.



- 5 Select a date format.

6 Set the date and time, and press **OK**.

- Use ◀ or ▶ to select a field and then use ▲ or ▼ to set the date and time.
- Select the minute field and press **OK** to confirm the setting.
- Press ☀ to display ☀ on the screen and enable daylight saving time. To disable daylight saving time, press ☀ again.




7 When the confirmation dialog is displayed, press **Yes**.

8 Follow the on-screen instructions to complete the setting.

- From here, follow the same procedure for “Setup from a Smartphone or Tablet” from step 9 (page 14).

Changing the Language, Date, and Time Settings

You can change the **Language** and **Date and time** settings in the  camera settings menu.

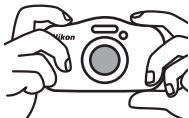


Taking Pictures

- 1** Hold the camera steady and aim the camera so that you can see your subject on the screen.

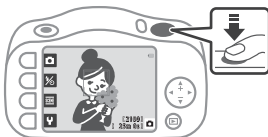


- Guide one hand through the camera strap and hold the camera steady with both hands.
- When taking pictures, be careful not to cover the flash or lens with your fingers.

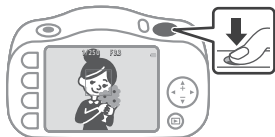


- 2** Press the shutter-release button slightly (halfway).

- The camera focuses.



- 3** Press the shutter-release button the rest of the way down.
- The camera captures an image.




Using the Zoom


- ▲: Captures a bigger subject.
- ▼: Captures a wider view.




Recording Movies

- 1** While  is displayed on the lower-right of the screen, aim the camera so that you can see your subject on the screen.
- Make sure you do not cover the microphone.



- 2** Press the  (movie-record) button.
- The camera starts recording a movie.



- 3** Press the  (movie-record) button again.
- The camera stops recording the movie.

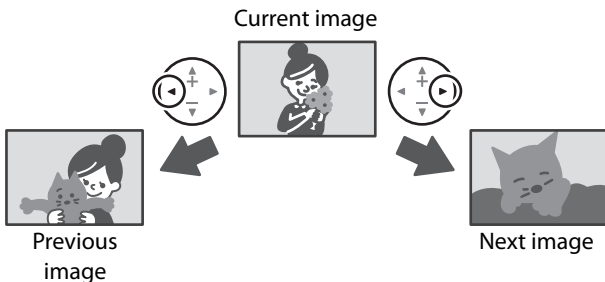


Viewing Your Images

- 1 Press the **▶** (shooting/playback mode) button.
 - **▶** is displayed on the lower-right of the screen.
 - The last picture you took is displayed.




- 2 Use the multi selector to look through your images.



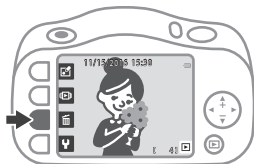
- If you press the **▶** (shooting/playback mode) button again, **📷** is displayed on the lower-right of the screen and the camera returns to the shooting screen.

Deleting Images


- 1 When  is displayed on the lower-right of the screen, look through your images and find an image you want to delete.

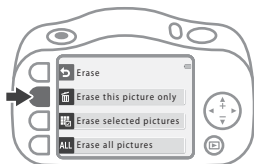


- 2 Press .



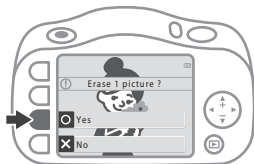
- 3 Press  **Erase this picture only.**

- Press  if you want to exit without deleting the image.



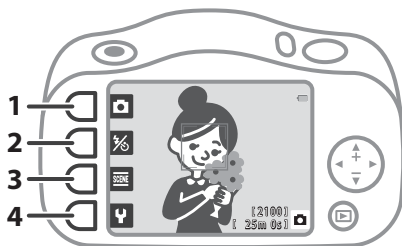
- 4 Press  **Yes.**

- If you delete an image, you cannot recover it.





Things You Can Do When Shooting



- 1** Allows you to easily take beautiful pictures.
- 2** Allows you to set the flash, self-timer, and smile timer.
- 3** Allows you to shoot with settings suited to the selected style. You can also add borders to images or change the colors.
- 4** Allows you to change the camera's settings.

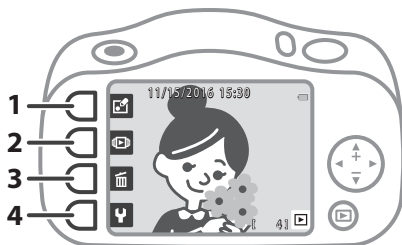
Create a Diorama Effect /Shoot a Movie Miniature





(→ → /SCENE → →)

You can take miniature-like pictures and movies with just a simple press of the shutter-release button.



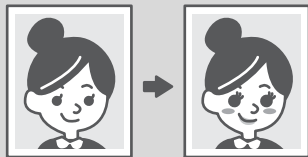
Things You Can Do When Viewing



- 1**  Allows you to edit images or add messages to images. You can also protect images from accidental deletion.
- 2**  Allows you to select and view images from the calendar. In slide show, the images are displayed in order.
- 3**  Allows you to delete images.
- 4**  Allows you to change the camera's settings.

Add Makeup (→ →)


You can play with makeup effects such as adding cheek color, adding foundation, and making eyes larger.

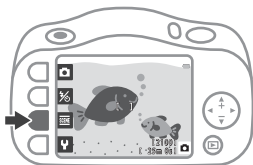


Taking Pictures Underwater

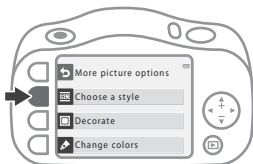
Before Using the Camera Underwater


Read "Notes About Shockproof, Waterproof, and Dustproof Performance" (page 33) and "Before Using the Camera Underwater" (page 34) thoroughly.

- 1 While  is displayed on the lower-right of the screen, press **SCENE**.



- 2 Press **SCENE** **Choose a style**.



- 3 Press **◀** or **▶**, select  **Shoot under water** and press **OK**.
 - The waterproofing-related message is displayed. Confirm the message and press **▶** to display the next message. Press **OK** to start shooting.



- 4** Press the shutter-release button.



Cleaning the Camera After Using It Underwater




Read "Cleaning After Using the Camera Underwater" (page 41) thoroughly.

Underwater Face Framing (SCENE → SCENE →)

The camera searches for human faces underwater and then automatically captures images. You can take pictures without submerging your face by putting only the camera underwater.



Other Ways to Have Fun

-  **Add messages**
Add voice messages to captured images.
-  **Decorate**
Add a frame around your images.
-  **Change sounds**
Set the shutter sound and button sound.

For Your Safety

Information and Precautions

Life-Long Learning

As part of Nikon's "Life-Long Learning" commitment to ongoing product support and education, continually updated information is available online at the following websites:

- For users in the U.S.A.: <http://www.nikonusa.com/>
- For users in Europe: <http://www.europe-nikon.com/support/>
- For users in Asia, Oceania, the Middle East, and Africa: <http://www.nikon-asia.com/>

Visit these websites to keep up-to-date with the latest product information, tips, answers to frequently asked questions (FAQs), and general advice on digital imaging and photography. Additional information may be available from the Nikon representative in your area. Visit the website below for contact information.

<http://imaging.nikon.com/>

Use Only Nikon Brand Electronic Accessories

Nikon COOLPIX cameras are designed to the highest standards and include complex electronic circuitry. Only Nikon brand electronic accessories (including battery chargers, batteries, Charging AC Adapters, AC adapters, and USB cables) certified by Nikon specifically for use with this Nikon digital camera are engineered and proven to operate within the operational and safety requirements of this electronic circuitry.

THE USE OF NON-NIKON ELECTRONIC ACCESSORIES COULD DAMAGE THE CAMERA AND MAY VOID YOUR NIKON WARRANTY.

The use of third-party rechargeable Li-ion batteries not bearing the Nikon holographic seal could interfere with normal operation of the camera or result in the batteries overheating, igniting, rupturing, or leaking.

For more information about Nikon brand accessories, contact a local authorized Nikon dealer.

Holographic seal: Identifies this device as an authentic Nikon product.



Before Taking Important Pictures

Before taking pictures on important occasions (such as at weddings or before taking the camera on a trip), take a test shot to ensure that the camera is functioning normally. Nikon will not be held liable for damages or lost profits that may result from product malfunction.

About the Manuals

- No part of the manuals included with this product may be reproduced, transmitted, transcribed, stored in a retrieval system, or translated into any language in any form, by any means, without Nikon's prior written permission.
- Illustrations and screen content shown in this manual may differ from the actual product.
- Nikon reserves the right to change the specifications of the hardware and software described in these manuals at any time and without prior notice.
- Nikon will not be held liable for any damages resulting from the use of this product.
- While every effort was made to ensure that the information in these manuals is accurate and complete, we would appreciate it were you to bring any errors or omissions to the attention of the Nikon representative in your area (address provided separately).

Comply with Copyright Notices

Under copyright law, photographs or recordings of copyrighted works made with the camera can not be used without the permission of the copyright holder. Exceptions apply to personal use, but note that even personal use may be restricted in the case of photographs or recordings of exhibits or live performances.

Disposing of Data Storage Devices

Please note that deleting images or formatting data storage devices such as memory cards or built-in camera memory does not completely erase the original image data. Deleted files can sometimes be recovered from discarded storage devices using commercially available software, potentially resulting in the malicious use of personal image data. Ensuring the privacy of such data is the user's responsibility.

Before discarding a data storage device or transferring ownership to another person, make sure to reset all of the camera's settings in **Reset all** in the camera settings menu. After resetting, erase all data in the device using commercial deletion software, or format the device in **Format memory** or **Format card** in the camera settings menu, then completely refill it with images containing no private information (for example, images of empty sky). Care should be taken to avoid injury or damage to property when physically destroying memory cards.

Conformity Marking

Follow the procedure below to display some of the conformity markings that the camera complies with.

Enter shooting mode or playback mode → flexible button 4 (Y) → flexible button 4 (Y Camera settings) → press ▲▼ → □ Conformity marking

For Your Safety

To prevent damage to property or injury to yourself or to others, read "For Your Safety" in its entirety before using this product.

Keep these safety instructions where all those who use this product will read them.



DANGER

Failure to observe the precautions marked with this icon carries a high risk of death or severe injury.



WARNING

Failure to observe the precautions marked with this icon could result in death or severe injury.



CAUTION

Failure to observe the precautions marked with this icon could result in injury or property damage.



WARNING

- Do not use while walking or operating a vehicle. Failure to observe this precaution could result in accidents or other injury.
- Do not disassemble or modify this product. Do not touch internal parts that become exposed as the result of a fall or other accident. Failure to observe these precautions could result in electric shock or other injury.
- Should you notice any abnormalities such as the product producing smoke, heat, or unusual odors, immediately disconnect the battery or power source. Continued operation could result in fire, burns or other injury.
- Do not handle the plug with wet hands. Failure to observe this precaution could result in fire or electric shock.
- Do not let your skin remain in prolonged contact with this product while it is on or plugged in. Failure to observe this precaution could result in low-temperature burns.
- Do not use this product in the presence of flammable dust or gas such as propane, gasoline or aerosols. Failure to observe this precaution could result in explosion or fire.
- Do not aim the flash at the operator of a motor vehicle. Failure to observe this precaution could result in accidents.

- Keep this product out of reach of children. Failure to observe this precaution could result in injury or product malfunction. In addition, note that small parts constitute a choking hazard. Should a child swallow any part of this product, seek immediate medical attention.
- Do not entangle, wrap or twist the straps around your neck. Failure to observe this precaution could result in accidents.
- Do not use batteries, chargers, AC adapters, or USB cables not specifically designated for use with this product. When using batteries, chargers, AC adapters, and USB cables designated for use with this product, do not:
 - Damage, modify, forcibly tug or bend the cords or cables, place them under heavy objects, or expose them to heat or flame.
 - Use travel converters or adapters designed to convert from one voltage to another or with DC-to-AC inverters.Failure to observe these precautions could result in fire or electric shock.
- Do not handle the plug when charging the product or using the AC adapter during thunderstorms. Failure to observe this precaution could result in electric shock.
- Do not handle with bare hands in locations exposed to extremely high or low temperatures. Failure to observe this precaution could result in burns or frostbite.



CAUTION

- Do not leave the lens pointed at the sun or other strong light sources. Light focused by the lens could cause fire or damage to product's internal parts. When shooting backlit subjects, keep the sun well out of the frame.
- Turn this product off when its use is prohibited. Disable wireless features when the use of wireless equipment is prohibited. The radio-frequency emissions produced by this product could interfere with equipment onboard aircraft or in hospitals or other medical facilities.
- Remove the battery and disconnect the AC adapter if this product will not be used for an extended period. Failure to observe this precaution could result in fire or product malfunction.
- Do not fire the flash in contact with or in close proximity to the skin or objects. Failure to observe this precaution could result in burns or fire.
- Do not leave the product where it will be exposed to extremely high temperatures, for an extended period such as in an enclosed automobile or in direct sunlight. Failure to observe this precaution could result in fire or product malfunction.



DANGER for Batteries

- Do not mishandle batteries. Failure to observe the following precautions could result in the batteries leaking, overheating, rupturing, or catching fire:
 - Use only rechargeable batteries approved for use in this product.
 - Do not expose batteries to flame or excessive heat.
 - Do not disassemble.
 - Do not short-circuit the terminals by touching them to necklaces, hairpins, or other metal objects.
 - Do not expose batteries or the products in which they are inserted to powerful physical shocks.
-
- Recharge batteries using the specified method. Failure to observe this precaution could result in the batteries leaking, overheating, rupturing, or catching fire.
-
- If battery liquid comes into contact with the eyes, rinse with plenty of clean water and seek immediate medical attention. Delaying action could result in eye injuries.
-



WARNING for Batteries

- Keep batteries out of reach of children. Should a child swallow a battery, seek immediate medical attention.
-
- Do not immerse this product in water or expose to rain. Failure to observe this precaution could result in fire or product malfunction. Immediately dry the product with a towel or similar object should it become wet.
-
- Discontinue use immediately should you notice any changes in the battery, such as discoloration or deformation. Cease charging if they do not charge in the specified period of time. Failure to observe these precautions could result in the battery leaking, overheating, rupturing, or catching fire.
-
- Prior to disposal, insulate battery terminals with tape. Overheating, rupture, or fire may result should metal objects come into contact with the terminals. Recycle or dispose of batteries in accord with local regulations.
-
- If battery liquid comes into contact with a person's skin or clothing, immediately rinse the affected area with plenty of clean water. Failure to observe this precaution could result in skin irritation.
-

Notices

Notices for Customers in the U.S.A.

IMPORTANT SAFETY INSTRUCTIONS - SAVE THESE INSTRUCTIONS.

DANGER - TO REDUCE THE RISK OF FIRE OR ELECTRIC SHOCK, CAREFULLY FOLLOW THESE INSTRUCTIONS

For connection to a supply not in the U.S.A., use an attachment plug adapter of the proper configuration for the power outlet if needed.

The power supply unit is intended to be correctly orientated in a vertical or floor mount position.

Federal Communications Commission (FCC) Radio Frequency Interference Statement

This equipment has been tested and found to comply with the limits for a Class B digital device, pursuant to Part 15 of the FCC rules. These limits are designed to provide reasonable

protection against harmful interference

in a residential installation. This equipment generates, uses, and can radiate radio frequency energy and, if not installed and used in accordance with the instructions, may cause harmful interference to radio communications. However, there is no guarantee that interference will not occur in a particular installation. If this equipment does cause harmful interference to radio or television reception, which can be determined by turning the equipment off and on, the user is encouraged to try to correct the interference by one or more of the following measures:

- Reorient or relocate the receiving antenna.
- Increase the separation between the equipment and receiver.
- Connect the equipment into an outlet on a circuit different from that to which the receiver is connected.
- Consult the dealer or an experienced radio/television technician for help.



CAUTIONS

Modifications

The FCC requires the user to be notified that any changes or modifications made to this device that are not expressly approved by Nikon Corporation may void the user's authority to operate the equipment.

Interface Cables

Use the interface cables sold or provided by Nikon for your equipment. Using other interface cables may exceed the limits of Class B Part 15 of the FCC rules.

Notice for Customers in the State of California

WARNING

Handling the cord on this product will expose you to lead, a chemical known to the State of California to cause birth defects or other reproductive harm.

Wash hands after handling.

Nikon Inc.,

1300 Walt Whitman Road, Melville, New York 11747-3064, U.S.A.

Tel: 631-547-4200

Notice for Customers in Canada

CAN ICES-3 B / NMB-3 B

<Important> Notes About Shockproof, Waterproof, and Dustproof Performance and Condensation

- The shockproof, waterproof, and dustproof performance described here do not guarantee that the camera will remain completely waterproof or free from damage and trouble under all conditions.
- Do not subject the camera to excessive shock, vibration or pressure by dropping it, hitting it, or placing a heavy object on it. Failure to observe this precaution could deform the camera, cause water to seep inside, or damage the airtight seals, resulting in camera malfunction.
- Your Nikon warranty may not cover troubles caused by water seeping inside the camera due to improper handling of the camera.

Notes About Shockproof Performance

This camera has passed Nikon's in-house test (drop test from a height of 180 cm (5 ft 10 in.) on a 5 cm (2 in.) thick plywood panel) compliant with the MIL-STD 810F Method 516.5-Shock* standard.

Changes in appearance, such as paint peeling off and deformation of the camera, are not measured in Nikon's in-house test.

* U.S. Department of Defense test method standard.

This drop test drops 5 cameras in 26 directions (8 edges, 12 corners, and 6 faces) from a height of 122 cm (4 ft) to make sure that one to five cameras pass the test (if any defect is detected during the test, another five cameras are tested to make sure that the test criteria are satisfied for one to five cameras).

Notes About Waterproof and Dustproof Performance

The camera is rated equivalent to JIS/IEC waterproof class 8 (IPX8) and JIS/IEC dustproof class 6 (IP6X) and can shoot images underwater at a depth of 10 m (33 ft) for up to 60 minutes.*

* This rating indicates that the camera has been designed to withstand the specified water pressure for the specified period of time when the camera is used according to the methods defined by Nikon.

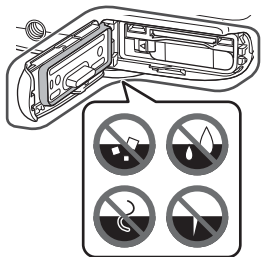
- The waterproof performance of this camera was tested in fresh water (swimming pools, rivers, and lakes) and salt water only.
- The inner portion of this camera is not waterproof. Water seeping inside the camera could cause the components to rust, resulting in high repair costs or irreparable damage.

Precautions When Cleaning

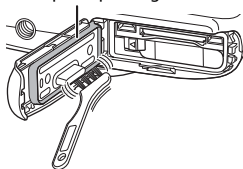
- Do not puncture the microphone or speaker openings with a sharp implement. If the inside of the camera is damaged, the waterproof performance will deteriorate.
- Do not use soap, neutral detergents, or chemicals such as benzene for cleaning.

Notes About Shockproof, Waterproof, and Dustproof Performance

- Do not drop the camera, strike it against a hard object such as a rock, or throw it against a water surface.
- Do not subject the camera to shock when using it underwater.
 - Do not subject the camera to water pressure by exposing it to rapids or waterfalls.
 - Do not expose to depths greater than 10 m (33 ft) underwater.
 - Make sure not to drop the camera underwater. This camera does not float in water.
- Do not continuously use the camera underwater for 60 minutes or more.
- Do not insert a wet memory card or battery in the camera.
 - Do not open the battery-chamber/memory card slot cover when the camera or your hands are wet. Doing so may cause water to seep inside the camera or result in camera malfunction.
- Do not open the battery-chamber/memory card slot cover underwater.
- If moisture such as water droplets adheres to the outside of the camera or inside of the battery-chamber/memory card slot cover, immediately wipe it off with a soft dry cloth.
 - If a foreign substance adheres to the outside of the camera or inside of the battery-chamber/memory card slot cover, immediately remove it with a blower or a soft cloth.
- If a foreign substance adheres to the waterproof packing inside the battery-chamber/memory card slot cover, remove it with the included brush. Do not use the included brush for anything other than cleaning the waterproof packing.
- Do not leave the camera in cold conditions or in hot conditions of 40°C (104°F) or more for a long period of time.
 - Doing so could cause deterioration of the waterproof performance.
 - When using the camera underwater, make sure the water temperature is from 0°C to 40°C (32°F to 104°F).
- Do not use the camera at hot springs.



Waterproof packing



Before Using the Camera Underwater

Check the items below before using the camera underwater.

- Make sure that there are no foreign substances inside the battery-chamber/memory card slot cover.
- Make sure that the waterproof packing of the battery-chamber/memory card slot cover is not cracked or deformed.
 - Make sure that the waterproof packing is not detached from the camera.
- Make sure that the battery-chamber/memory card slot cover is firmly closed.
 - Make sure that the battery-chamber/memory card slot cover security lock is in the LOCK position.

Notes About Operating Temperature, Humidity, and Condensation

The operation of this camera has been tested at temperatures from -10°C to $+40^{\circ}\text{C}$ (14°F to 104°F).

When you use the camera in cold climate regions or at high altitudes, observe the following precautions.

- Battery performance deteriorates temporarily when cold. Keep the camera and batteries warm under your clothing before use.
- Camera performance may deteriorate temporarily if it is exposed to extreme cold for an extended period. For example, the monitor may appear darker than normal immediately after the camera is turned on, or residual images may be produced.

● Environmental conditions that are likely to cause condensation inside of the camera

Fogging (condensation) may occur on the inside of the monitor or lens when there are sharp temperature changes or high humidity, such as in the environmental conditions described below. This is not a camera malfunction or defect.

- The camera is suddenly immersed in cold water after being in a hot place on land.
- The camera is brought to a warm place such as inside a building after being in the cold outdoors.
- The battery-chamber/memory card slot cover is opened or closed in a high-humidity environment.

● Clearing the fogging

- Turn off the camera and open the battery-chamber/memory card slot cover while in a place where the ambient temperature is stable (avoid places with high temperature, high humidity, sand, or dust).

To clear the fogging, remove the battery and memory card, and leave the battery-chamber/memory card slot cover open to allow the camera to adjust to the ambient temperature.

Inspection and Repair

- If the camera is exposed to shock, it is recommended to consult your retailer or Nikon-authorized service representative to confirm the waterproof performance (charged service).
- If the waterproof packing begins to deteriorate, consult your retailer or Nikon-authorized service representative. The waterproof performance of the waterproof packing may start to deteriorate after one year.
- If water seeps inside the camera, immediately stop using it and take it to your Nikon-authorized service representative.

Notes About Wireless Communication Functions

Restrictions on Wireless Devices

The wireless transceiver included in this product conforms to wireless regulations in the country of sale and is not for use in other countries (products purchased in the EU or EFTA can be used anywhere within the EU and EFTA). Nikon does not accept liability for use in other countries. Users who are unsure as to the original country of sale should consult with their local Nikon service center or Nikon-authorized service representative. This restriction applies to wireless operation only and not to any other use of the product.

Security

Although one of the benefits of this product is that it allows others to freely connect for the wireless exchange of data anywhere within its range, the following may occur if security is not enabled:

- Data theft: Malicious third-parties may intercept wireless transmissions to steal user IDs, passwords, and other personal information.
- Unauthorized access: Unauthorized users may gain access to the network and alter data or perform other malicious actions. Note that due to the design of wireless networks, specialized attacks may allow unauthorized access even when security is enabled. Nikon is not responsible for data or information leaks that may occur during data transfer.
- Do not access networks that you are not permitted to use, even if they are displayed on your smartphone or tablet. Doing so may be regarded as unauthorized access. Only access networks that you are permitted to use.

Personal Information Management and Disclaimer

- User information registered and configured on the product, including wireless LAN connection settings and other personal information, is susceptible to alteration and loss resulting from operational error, static electricity, accident, malfunction, repair or other handling. Always keep separate copies of important information. Nikon is not responsible for any direct or indirect damages or lost profits resulting from alteration or loss of content that is not attributable to Nikon.
- Before discarding this product or transferring it to another owner, perform **Reset all** in the camera settings menu to delete all user information registered and configured with the product, including wireless LAN connection settings and other personal information.
- Nikon is not responsible for any damages resulting from unauthorized use of this product by third parties in the event that the product is stolen or lost.

Precautions when Exporting or Carrying This Product Abroad

This product is controlled by the United States Export Administration Regulations (EAR). The permission of the United States government is not required for export to countries other than the following, which as of this writing are subject to embargo or special controls: Cuba, Iran, North Korea, Sudan, and Syria (list subject to change).

Notice for Customers in the U.S.A. and Canada

Federal Communications Commission (FCC) and Industry of Canada (IC)

Declaration of Conformity

This device complies with Part 15 of FCC Rules and Industry Canada licence-exempt RSS standard(s). Operation is subject to the following two conditions: (1) this device may not cause interference, and (2) this device must accept any interference, including interference that may cause undesired operation of this device.

FCC/IC RF Exposure Statement

This transmitter must not be co-located or operated in conjunction with any other antenna or transmitter.

The available scientific evidence does not show that any health problems are associated with using low power wireless devices. There is no proof, however, that these low power wireless devices are absolutely safe. Low power wireless devices emit low levels of radio frequency energy (RF) in the microwave range while being used. Whereas high levels of RF can produce health effects (by heating tissue), exposure of low-level RF that does not produce heating effects causes no known adverse health effects. Many studies of low-level RF exposures have not found any biological effects. Some studies have suggested that some biological effects might occur, but such findings have not been confirmed by additional research.

COOLPIX W100, which is equipped with a LBEE5ZZ1GV-893 (FCC ID:2AAD3JA0M0P0 / IC ID:4634A-6152EC) Wireless LAN Module, has been tested and found to comply with FCC/IC radiation exposure limits set forth for an uncontrolled environment and meets the FCC radio frequency (RF) Exposure Guidelines in Supplement C to OET65 and RSS-102 of the IC radio frequency (RF) Exposure rules. Please refer to the SAR test report that was uploaded to FCC website.

Caring for the Product

Observe the precautions described below in addition to the warnings in "For Your Safety" (pages 27-29) and "<Important> Notes About Shockproof, Waterproof, and Dustproof Performance and Condensation" (pages 32-35) when using or storing the device.

The Camera

Do Not Apply Strong Impact to the Camera

The product may malfunction if subjected to strong shock or vibration. In addition, do not touch or apply force to the lens.

Avoid Sudden Changes in Temperature

Sudden changes in temperature, such as when entering or leaving a heated building on a cold day, can cause condensation to form inside the device. To prevent condensation, place the device in a carrying case or a plastic bag before exposing it to sudden changes in temperature.

Keep Away from Strong Magnetic Fields

Do not use or store this device in the vicinity of equipment that generates strong electromagnetic radiation or magnetic fields. Doing so could result in loss of data or camera malfunction.

Do Not Point the Lens at Strong Light Sources for Extended Periods

Avoid pointing the lens at the sun or other strong light sources for extended periods when using or storing the camera. Intense light may cause the image sensor to deteriorate or produce a white blur effect in photographs.

Turn the Product Off Before Removing or Disconnecting the Power Source or Memory Card

Do not remove the battery while the product is on, or while images are being saved or deleted. Forcibly cutting power in these circumstances could result in loss of data or in damage to the memory card or internal circuitry.

Notes About the Monitor

- Monitors (including electronic viewfinders) are constructed with extremely high precision; at least 99.99% of pixels are effective, with no more than 0.01% being missing or defective. Hence while these displays may contain pixels that are always lit (white, red, blue, or green) or always off (black), this is not a malfunction and has no effect on images recorded with the device.
- Images in the monitor may be difficult to see under bright lighting.
- Do not apply pressure to the monitor, as this could cause damage or malfunction. Should the monitor break, care should be taken to avoid injury caused by broken glass and to prevent the liquid crystal from the display touching the skin or entering the eyes or mouth.

The Battery

Precautions for Use

- Note that the battery may become hot after use.
- Do not use the battery at ambient temperatures below 0°C (32°F) or above 40°C (104°F) as this could cause damage or malfunction.
- If you notice any abnormalities such as excessive heat, smoke, or an unusual smell coming from the battery, immediately discontinue use and consult your retailer or Nikon-authorized service representative.
- After removing the battery from the camera or optional battery charger, put the battery in a plastic bag, etc. in order to insulate it.

Charging the Battery

Check the battery level before using the camera and replace or charge the battery if necessary.

- Charge the battery indoors with an ambient temperature of 5°C to 35°C (41°F to 95°F) before use.
- A high battery temperature may prevent the battery from charging properly or completely, and may reduce battery performance. Note that the battery may become hot after use; wait for the battery to cool before charging.
When charging the battery inserted into this camera using the Charging AC Adapter or a computer, the battery is not charged at battery temperatures below 5°C (41°F) or above 55°C (131°F).
- When the battery temperature is between 45°C–55°C (113°F–131°F), the chargeable capacity may decrease.
- Do not continue charging once the battery is fully charged as this will result in reduced battery performance.
- The battery temperature may increase during charging. However, this is not a malfunction.

Carrying Spare Batteries

Whenever possible, carry fully charged spare batteries when taking pictures on important occasions.

Using the Battery When Cold

On cold days, the capacity of batteries tends to decrease. If an exhausted battery is used at a low temperature, the camera may not turn on. Keep spare batteries in a warm place and exchange as necessary. Once warmed, a cold battery may recover some of its charge.

Battery Terminals

Dirt on the battery terminals may prevent the camera from functioning. Should the battery terminals become dirty, wipe them off with a clean, dry cloth before use.

Charging an Exhausted Battery

Turning the camera on or off while an exhausted battery is inserted in the camera may result in reduced battery life. Charge the exhausted battery before use.

Storing the Battery

- Always remove the battery from the camera or optional battery charger when it is not being used. Minute amounts of current are drawn from the battery while it is in the camera, even when not in use. This may result in excessive battery drain and complete loss of function.
- Recharge the battery at least once every six months and completely exhaust it before returning it to storage.
- Put the battery in a plastic bag, etc. in order to insulate it and store it in a cool place. The battery should be stored in a dry location with an ambient temperature of 15°C to 25°C (59°F to 77°F). Do not store the battery in hot or extremely cold locations.


Battery Life

A marked drop in the time a fully charged battery retains its charge, when used at room temperature, indicates that the battery needs to be replaced. Purchase a new battery.

Recycling Used Batteries

Replace the battery when it no longer holds a charge. Used batteries are a valuable resource. Please recycle used batteries in accordance with local regulations.

The Charging AC Adapter

- The EH-73P Charging AC Adapter is for use only with compatible devices. Do not use with another make or model of device.
- Do not use any USB cable other than the UC-E21. Using a USB cable other than the UC-E21 could result in overheating, fire or electric shock.
- Do not, under any circumstances, use another make or model of AC adapter other than EH-73P Charging AC Adapter, and do not use a commercially available USB-AC adapter or a battery charger for a mobile phone. Failure to observe this precaution could result in overheating or in damage to the camera.
- The EH-73P is compatible with AC 100–240 V, 50/60 Hz electrical outlets. When using in other countries, use a plug adapter (commercially available) as necessary. For more information about plug adapters, consult your travel agency.
- The symbols on this product represent the following:
~ AC, — DC,  Class II equipment (The construction of the product is double-insulated.)

Cleaning and Storage

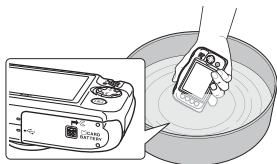
Cleaning After Using the Camera Underwater

Follow the procedure below to rinse the camera with fresh water within 60 minutes after using it underwater or at the beach.

1. Keep the battery-chamber/memory card slot cover closed and wash off the camera with fresh water.

Immerse the camera in a shallow basin filled with fresh water for 10 minutes.

- Immerse the camera in fresh water and shake it sufficiently in the water to remove any foreign substances from the camera.
- When the camera is immersed in the water, a few air bubbles may come out from the water drain holes of the camera such as openings in the microphone or speakers. This is not a malfunction.



2. Wipe off water droplets with a soft cloth and dry the camera in a well-ventilated and shady place.

- Place the camera on a dry cloth to dry it.
- Do not dry the camera with hot air from a hair dryer or clothes dryer.

3. After making sure that there are no water droplets on the camera, open the battery-chamber/memory card slot cover and use a soft dry cloth to gently wipe off any water or sand remaining on the waterproof packing or inside the camera.

- If the cover is closed when the inside is wet, this could cause condensation or a malfunction.

Cleaning After Using the Camera in Conditions Other than Underwater

Use a blower to remove any dust or lint that adheres to the lens, lens protector, monitor, or camera body. To remove fingerprints or other stains that cannot be removed with a blower, gently wipe the parts with a soft dry cloth. If you wipe with too much pressure or with a rough cloth, it may damage the camera or cause a malfunction.

Storage

If you do not intend to use the camera for an extended period, remove the battery and avoid storing the camera in any of the following types of locations:

- Places that are poorly ventilated or subject to humidity of over 60%
- Places exposed to temperatures above 50°C (122°F) or below -10°C (14°F)
- Places next to equipment that produces strong electromagnetic fields, such as televisions or radios

To prevent mold or mildew, take the camera out of storage at least once a month, and turn it on and release the shutter a few times before putting it away again. Completely exhaust the battery before storing it, and recharge it at least once every six months. Also, place the battery in a container such as plastic bag in order to insulate it, and store it in a cool place.

Technical Notes

Troubleshooting

If the camera fails to function as expected, check the list of common problems below before consulting your retailer or Nikon-authorized service representative.

Also, refer to the Reference manual (PDF format) for further details on how to use this camera (page 4).

Problem	Cause/Solution
The camera is on but does not respond.	<ul style="list-style-type: none">• Wait for recording to end.• If the problem persists, turn the camera off. If the camera does not turn off, remove and reinsert the battery or batteries or, if you are using an AC adapter, disconnect and reconnect the AC adapter. Note that although any data currently being recorded will be lost, data that have already been recorded will not be affected by removing or disconnecting the power source.
The camera cannot be turned on.	The battery is exhausted.
The camera turns off without warning.	<ul style="list-style-type: none">• The camera automatically turns off to save power (auto off function).• The camera and battery may not work properly at low temperatures.• The inside of the camera has become hot. Leave the camera off until the inside of the camera has cooled, and then try turning it on again.
The monitor is blank.	<ul style="list-style-type: none">• The camera is off.• The camera automatically turns off to save power (auto off function).• The flash lamp flashes while the flash is charging. Wait until charging is complete.• The camera is connected to a TV or computer.• The camera is shooting while Choose a style is set to Add light trails.
The camera becomes hot.	The camera may become hot when used for an extended period of time such as to shoot movies, or when used in a hot environment; this is not a malfunction.

Memory Cards That Can Be Used

The camera supports SD, SDHC, and SDXC memory cards.

- Memory cards with an SD Speed Class rating of 6 or faster are recommended for recording movies. When using a memory card with a lower Speed Class rating, movie recording may stop unexpectedly.
- If you use a card reader, make sure that it is compatible with your memory card.
- Contact the manufacturer for information on features, operation, and limitations on use.

Trademark Information

- Windows is either a registered trademark or trademark of Microsoft Corporation in the United States and/or other countries.
- The *Bluetooth*® word mark and logos are registered trademarks owned by Bluetooth SIG, Inc. and any use of such marks by Nikon Corporation is under license.
- Apple®, App Store®, the Apple logos, Mac, OS X, iPhone®, iPad®, iPod touch® and iBooks are trademarks or registered trademarks of Apple Inc., in the U.S. and other countries.
- Android and Google Play are trademarks or registered trademarks of Google Inc. The Android robot is reproduced or modified from work created and shared by Google and used according to terms described in the Creative Commons 3.0 Attribution License.
- iOS is a trademark or registered trademark of Cisco Systems, Inc., in the United States and/or other countries and is used under license.
- Adobe, the Adobe logo, and Reader are either trademarks or registered trademarks of Adobe Systems Incorporated in the United States and/or other countries.
- SDXC, SDHC, and SD Logos are trademarks of SD-3C, LLC.



- PictBridge is a trademark.
- HDMI, HDMI logo and High-Definition Multimedia Interface are trademarks or registered trademarks of HDMI Licensing, LLC.



- Wi-Fi and the Wi-Fi logo are trademarks or registered trademarks of the Wi-Fi Alliance.
- The N-Mark is a trademark or registered trademark of NFC Forum, Inc. in the United States and in other countries.
- All other trade names mentioned in this manual or the other documentation provided with your Nikon product are the trademarks or registered trademarks of their respective holders.

“Made for iPod,” “Made for iPhone,” and “Made for iPad” mean that an electronic accessory has been designed to connect specifically to iPod, iPhone, or iPad, respectively, and has been certified by the developer to meet Apple performance standards. Apple is not responsible for the operation of this device or its compliance with safety and regulatory standards. Please note that the use of this accessory with iPod, iPhone, or iPad may affect wireless performance.

AVC Patent Portfolio License

This product is licensed under the AVC Patent Portfolio License for the personal and non-commercial use of a consumer to (i) encode video in compliance with the AVC standard (“AVC video”) and/or (ii) decode AVC video that was encoded by a consumer engaged in a personal and non-commercial activity and/or was obtained from a video provider licensed to provide AVC video. No license is granted or shall be implied for any other use. Additional information may be obtained from MPEG LA, L.L.C. See <http://www.mpegla.com>.

FreeType License (FreeType2)

Portions of this software are copyright © 2012 The FreeType Project (<http://www.freetype.org>). All rights reserved.

MIT License (HarfBuzz)

Portions of this software are copyright © 2016 The HarfBuzz Project (<http://www.freedesktop.org/wiki/Software/HarfBuzz>). All rights reserved.



A series of horizontal dashed lines for handwriting practice, spanning the width of the page.



No reproduction in any form of this manual, in whole or in part (except for brief quotation in critical articles or reviews), may be made without written authorization from NIKON CORPORATION.

NIKON CORPORATION

© 2016 Nikon Corporation



CT6L01(11)
6MQA0311-01