

iHome



POCKETPRINT3

Smartphone Photo Printer

prints 3" x 3" photos

USER GUIDE



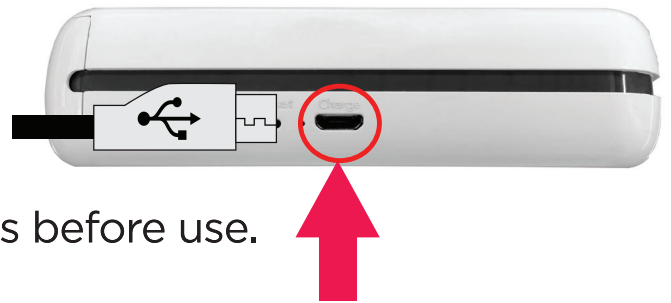
Introduction

Congratulations on the purchase of your iHome PocketPrint3 mobile photo printer! Printing high-quality super-sharp photos is made fast and easy utilizing the patented 4PASS printing system. Visit our website at www.elitebrands.com for the latest news and updates on our products.

Recharging the Battery

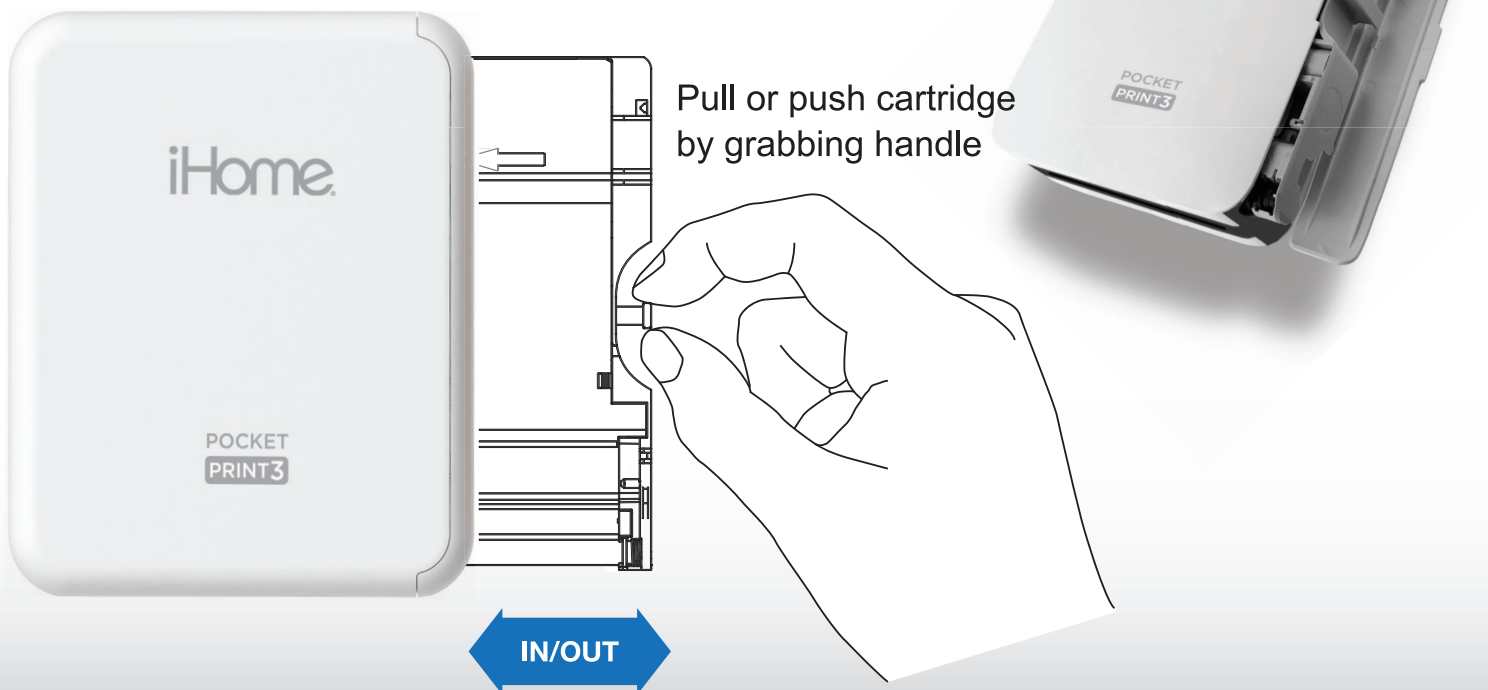
Your printer contains a non-removable lithium-polymer rechargeable battery. Simply plug the smaller end of the included USB plug into the printer's port and the larger end into a USB charger.

Charge your printer for at least 2 hours before use.



Paper + Ink Single Cartridge

Included with your printer is a 10-paper cartridge. Insert the cartridge as shown. The cartridge can only be inserted in one way.

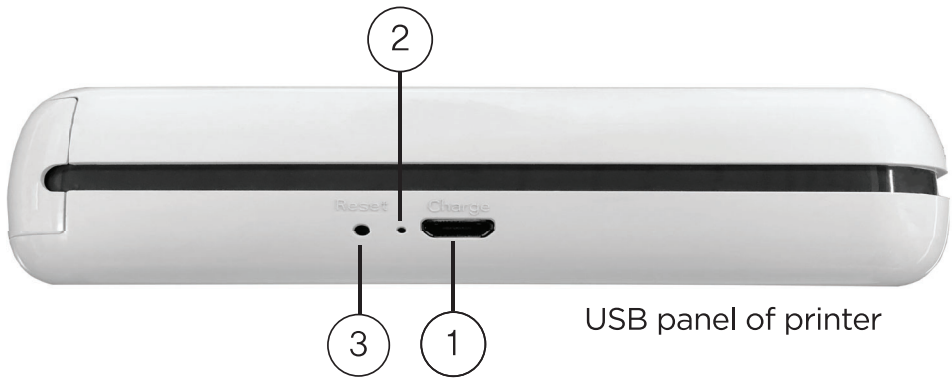


Buttons and Active Status



side panel of printer

⊖	Power Button	Power ON / Power OFF (hold for 2 seconds)
⊖○	White LED Solid	Power On
	White LED Blinking	Printing in process
	Pink LED Blinking	Firmware upgrade in process
	Red LED Blinking	No cartridge inserted / defective cartridge
⊖○	White LED Blinking	Printer element is cooling down
⊖○	Blue LED Blinking	Bluetooth connecting
	Green LED Solid	Bluetooth connected successfully



USB panel of printer

- ① USB Port: Plug in a USB cable to recharge battery
- ② Red LED: Charging in progress
Green LED: Charging complete
- ③ Reset Button: Insert and press with a thin, pointy object if your printer becomes unresponsive

Smartphone App Installation

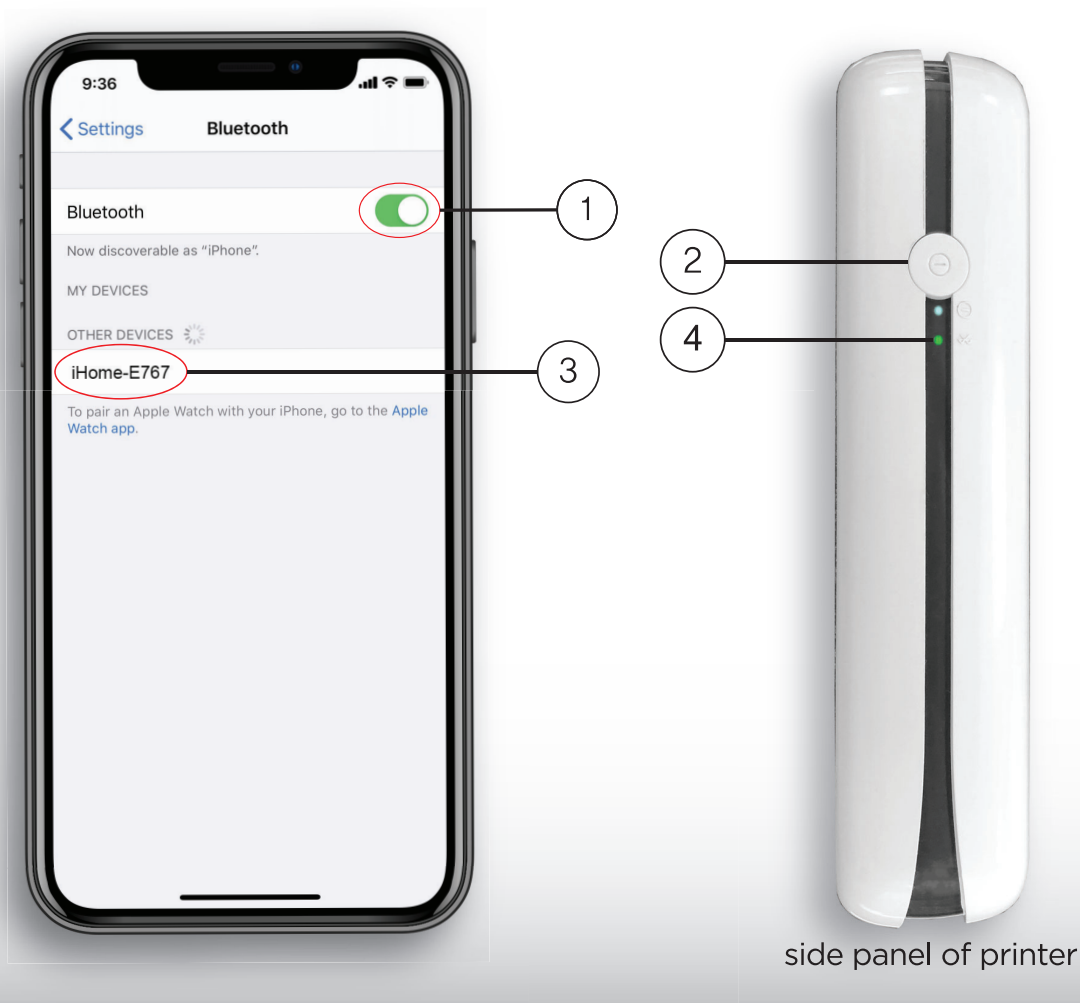
- (1) Go to the iOS App Store or Google Play Store on your smartphone.
- (2) Search for “iHome PRINT”.
- (3) Download and launch the app once installation is complete.



app icon

Bluetooth Connection

- (1) Enable Bluetooth in your smartphone's settings.
- (2) Power your printer on.
- (3) Go to the Bluetooth settings on your smartphone and select “iHome-XXXX” (‘XXXX’ represents your printer's device number).
- (4) Once the Bluetooth connection is established, the Bluetooth LED on your printer will illuminate in green.

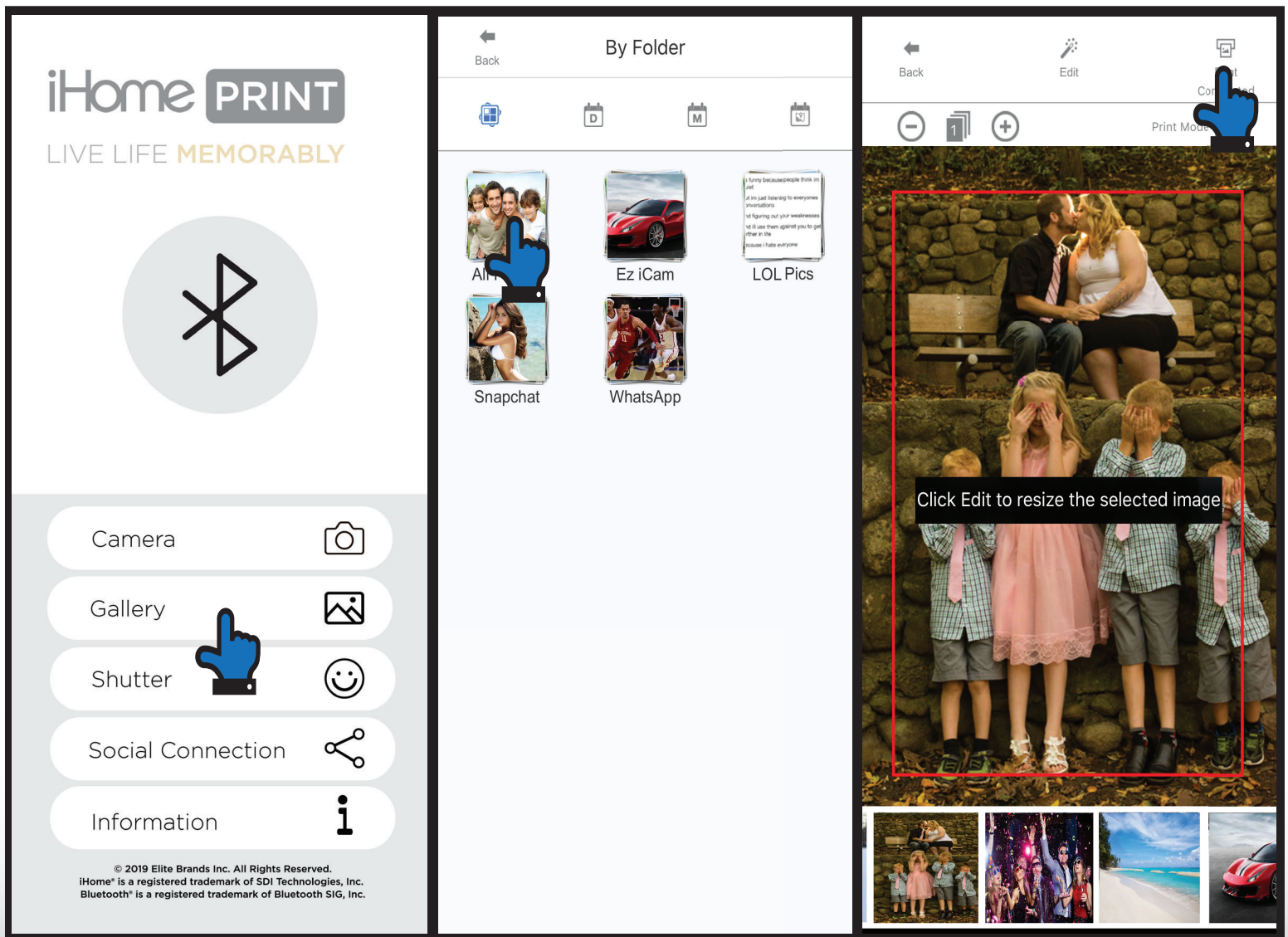


Printing Photos From Your Smartphone

- (1) Ensure that your printer and smartphone are connected.
- (2) Launch the “iHome PRINT” app from your smartphone.
- (3) In the app, select the Gallery menu.
- (4) Select a photo from one of the folders in your smartphone photo library. You can view photos by folder, date or month.
- (5) Once a photo is selected, you may edit the photo by tapping Edit.
- (6) To print a photo, tap the Print button in the top right corner.

**** Do not exit or close the app until the photo has completed the printing process. Exiting or closing the app will cancel the print job.**


visualization of iHome PRINT smartphone app



Notes

- * Upon printing a photo from first power-up, the printer will initiate a 30 seconds warming process in preparation for printing.
- * The photo printing process runs for approximately 50 seconds per photo print.
- * During the printing process, the photo paper will retract in and out 4 times times (Yellow, Magenta, Cyan, Laminate Overcoating). For the best image quality, do not touch the paper until the printing process is complete.
- * Do not pull the paper out by force until printing is completed.
- * Do not place any object in front of the paper exit slot.
- * Be sure to periodical check the app store for the latest app version and firmware updates available for download.
- * The printer contains a non-removable rechargeable battery.
- * Do not attempt to disassemble or repair. Doing so may void the warranty.
- * Avoid extremely high or low temperature.
- * Handle with care and avoid any shock or blunt force.
- * A higher resolution photo will produce a higher print photo quality. The minimum recommended image photo size for printing is 2448x1280 pixels.

Troubleshooting

Symptom	Solution
Paper Jam	Power off and on again; paper will automtically eject. If not, replace the cartridge with a new cartridge.
Printout is unclear or blurry	Original photo file may already be unclear or blurry. The minimum recommended image pixel size is 2448x1280 pixels.
Printer not responding	Reset the printer with a pointy object as shown. 

FCC STATEMENT

This device complies with Part 15 of the FCC Rules. Operation is subject to the following two conditions:

- (1) this device may not cause harmful interference, and
- (2) this device must accept any interference received, including interference that may cause undesired operation.

[illegible]

iHome IHMP33 Technical Specifications

General	Printing Technology		4PASS Technology (Dye Diffusion Thermal Transfer)
	User Interface	LED	Printer Status, Bluetooth Status, Battery Status
		Key / Button	Power, Reset
	Connectivity	Wireless Connectivity	Bluetooth
	Power Consumption	Standard Operation	Max 13W
		Auto Power Off	5 minutes
	Internal Battery	Capacity	Single lithium, 7.4v 1250mAh, 9.25Wh
		Charging Method	Rechargeable via USB port
		Max Printing Sheets on Full Charge	20 Sheets
		Time to Full Charge	120 minutes
	Acoustic Noise	Printing	Less than 60 dB
	Dimensions (W x D x H)	Body (inches)	5.0 x 4.1 x 1.3
		Set Packing (inches)	6.2 x 4.2 x 2.0
Printing	Gross Weight	Full Set with Packaging	15.1 ounces
	Boot Time		14 sec
	Print Speed		70 seconds for first print after first boot-up, 50 seconds afterwards
Media Handling	Resolution		291 dpi, 16.7 million colors gradation
	Smartphone OS Support	Android	Android OS version 7.0 and later
		Apple iOS	iOS version 10.0 and later
Media Handling	Input Capacity	Standard	iHome IHC33-10: 10 sheet cartridge @ 220g ² /m
	Output Capacity	Standard	1 Sheet @ 220g/m ²
	Media Size	Standard (inches)	iHome IHC33-10 Cartridge: 3.0 x 3.0
APP	Application	Smartphone App	iHome PRINT on iOS App Store/Google Play
	Photo Formats Supported		JPEG, PNG
	Capture, Retrieve, Print and Share Photos	Photo Capture	Smartphone App Menu Feature
		Smartphone Gallery	Yes
		Smartphone Camera	Yes
	Edit Photos	Crop, Rotation, Resize etc.	Yes
		Insert Text, Sticker, etc.	Yes
		Adjust Color, Sharpness etc.	Color, Sharpness, Brightness
		Filter and Frame	Yes
		ID photo / Business Card	Yes
		Collage	Yes
Environment	Firmware Upgrade	via App Update	Yes
	Recommended	10 ~ 30 degree C / 5-70% RH	
Environment	Storing Conditions	-30 ~ 70 degree C	



© 2019 Elite Brands Inc. All Rights Reserved.

iHome is a registered trademark of SDI Technologies, Inc.

Bluetooth is a registered trademark of Bluetooth SIG, Inc.

POCKETPRINT, POCKETPRINT3, and LIVE LIFE MEMORABLY are trademarks of Elite Brands Inc., New York, NY, and all rights are reserved.

iPhone, App Store, Android, and Google Play are trademarks of their respective owners.

DISTRIBUTED AND MANUFACTURED UNDER LICENSE BY ELITE BRANDS INC.

Elite Brands Inc. 40 Wall Street, Floor 61, New York, NY 10005 USA

(800) 441-1100 • www.elitebrands.com

MADE IN KOREA