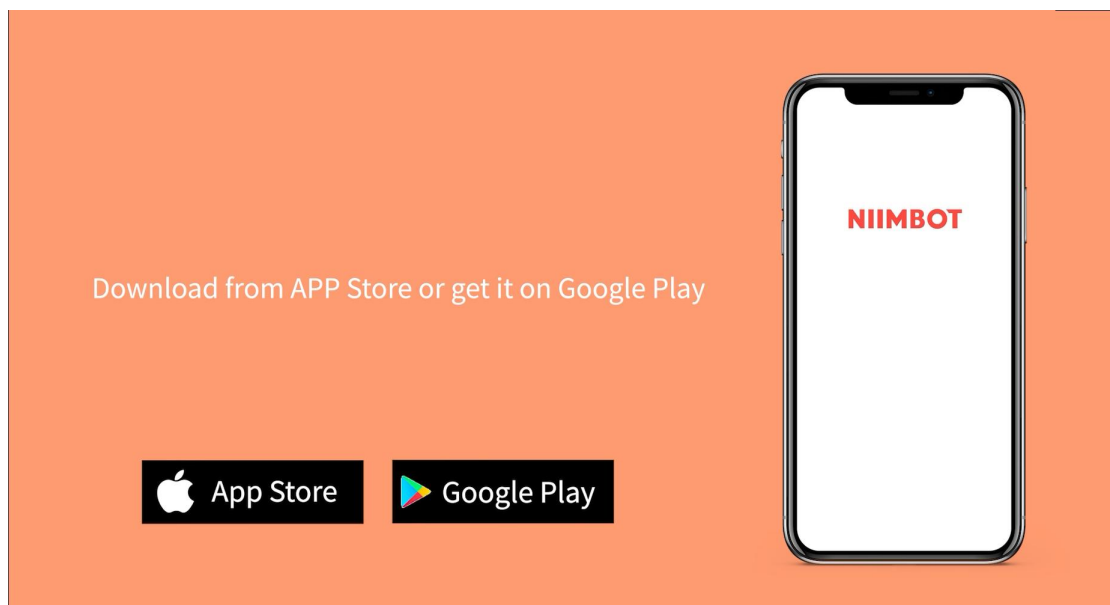


1、 How to Load Label Paper Correctly ?

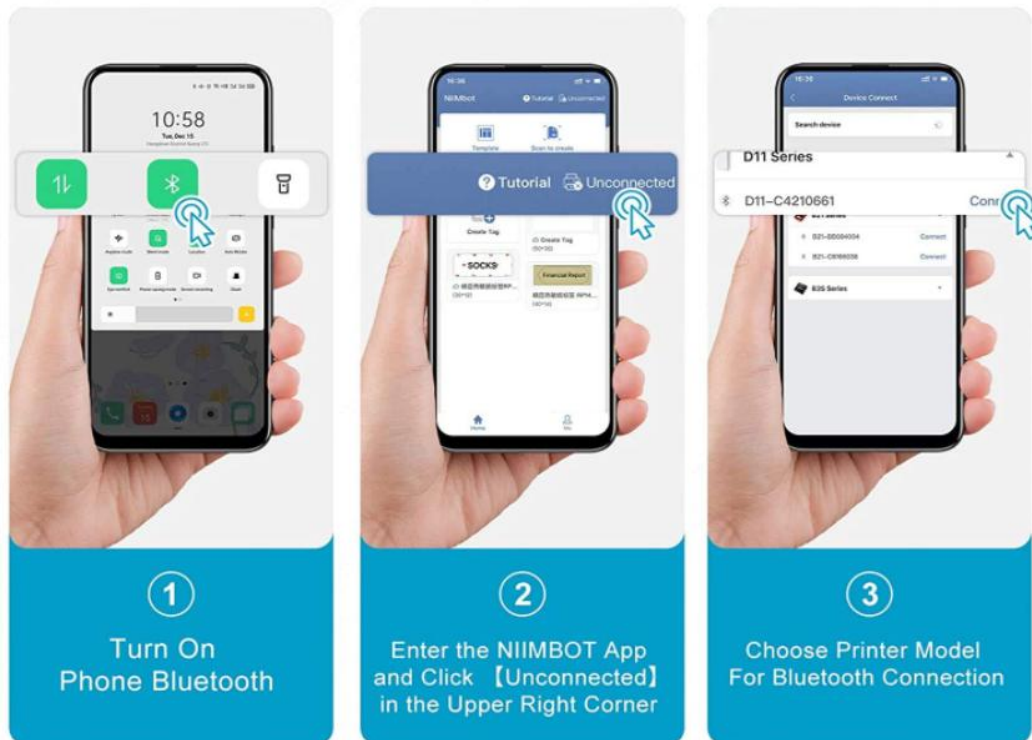


2、 How to Get NIIMBOT App ?

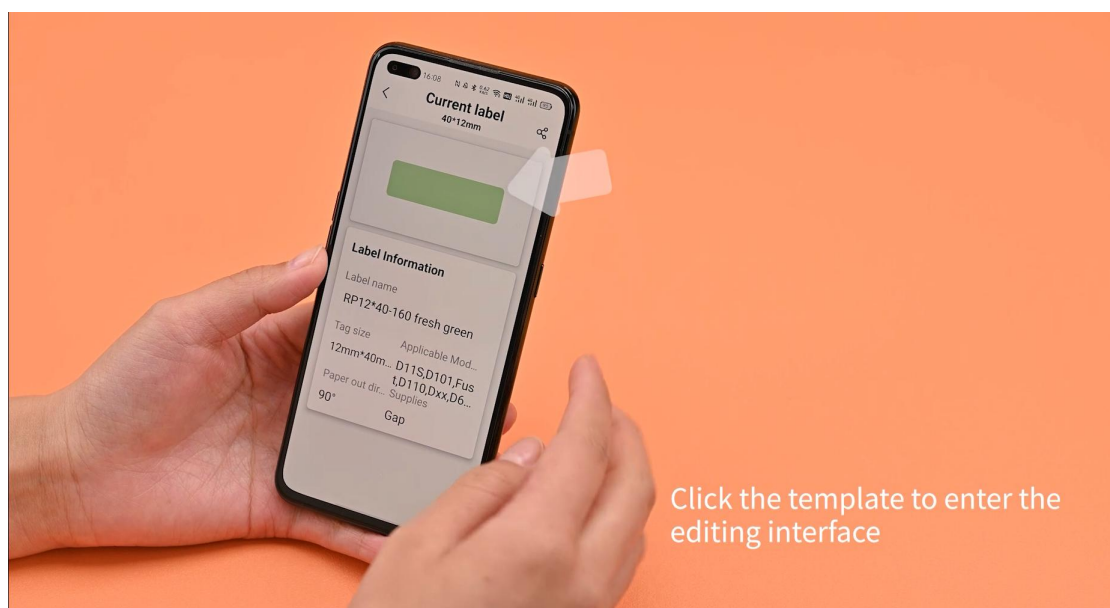


Search NIIMBOT and Install from App Store or Google Play

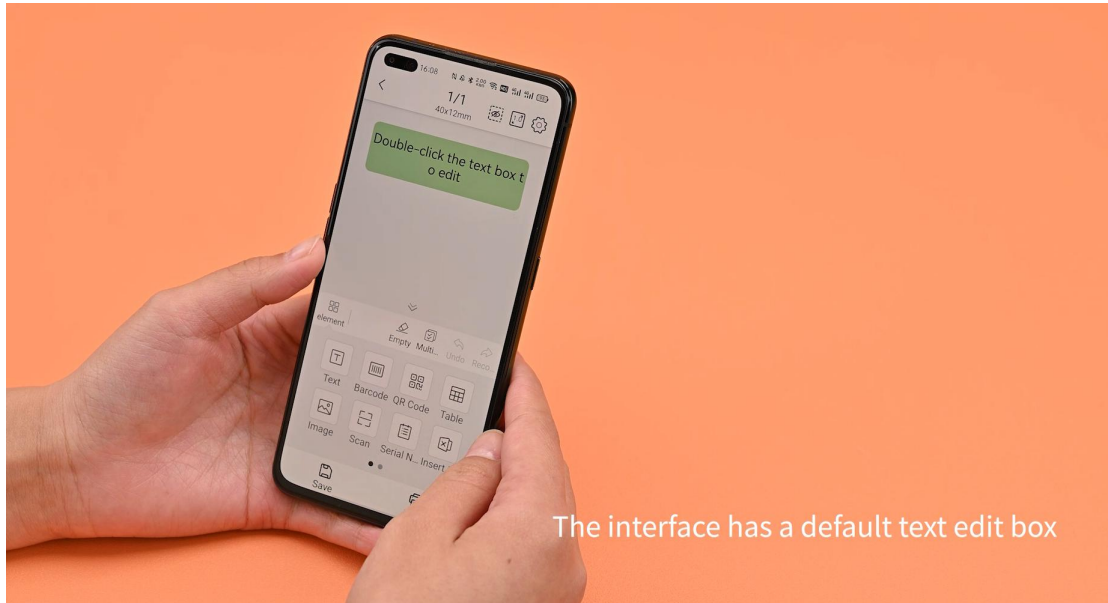
3、How to Connect to Bluetooth ?



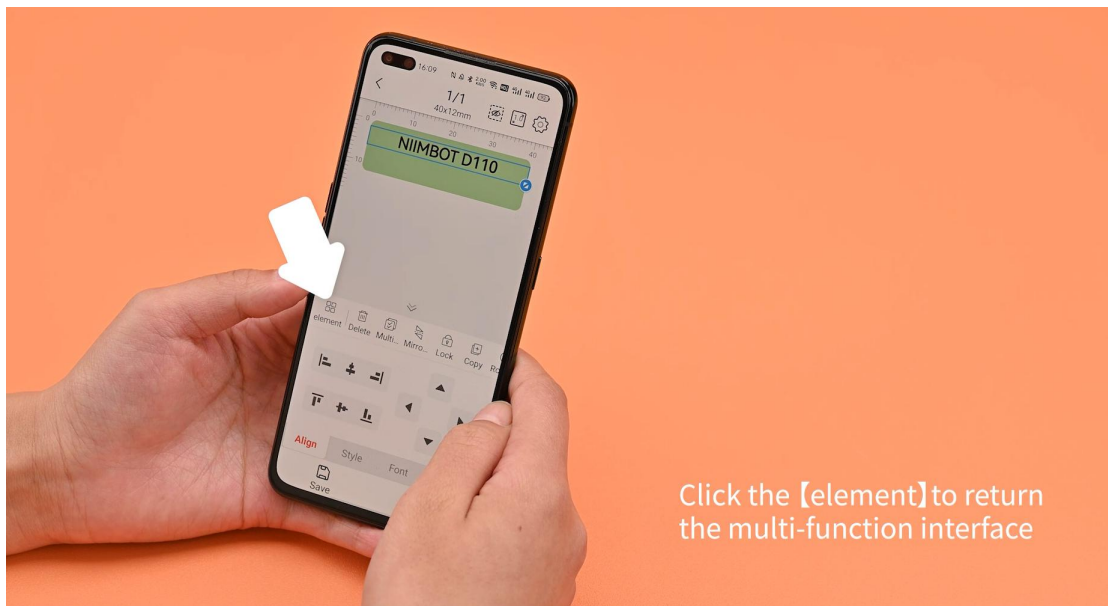
4、How to Edit Content and Print ?



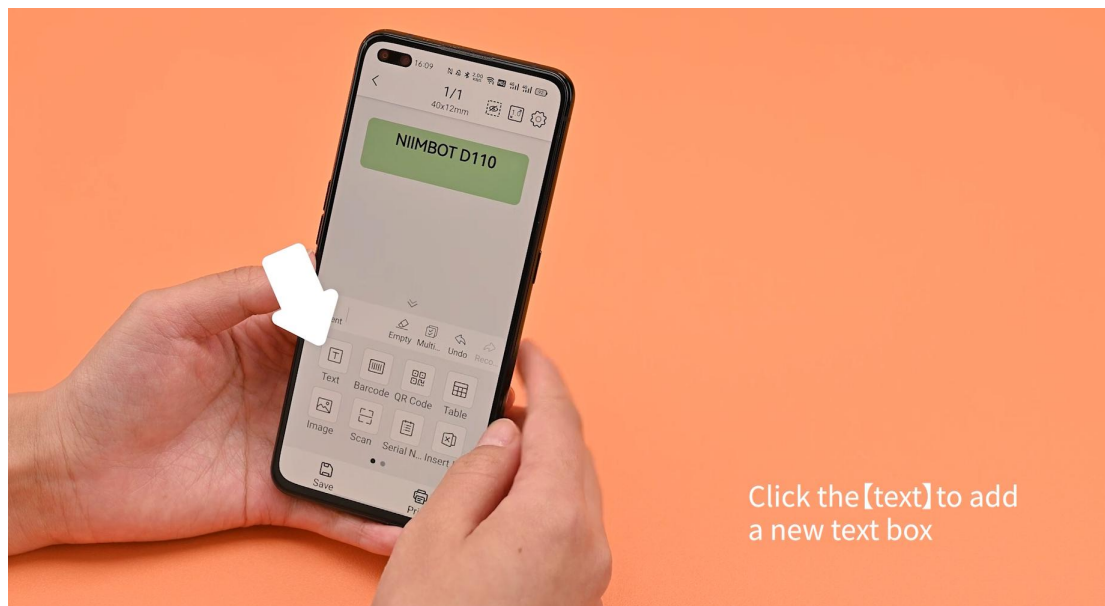
- ① Select the template corresponding to the label sheet



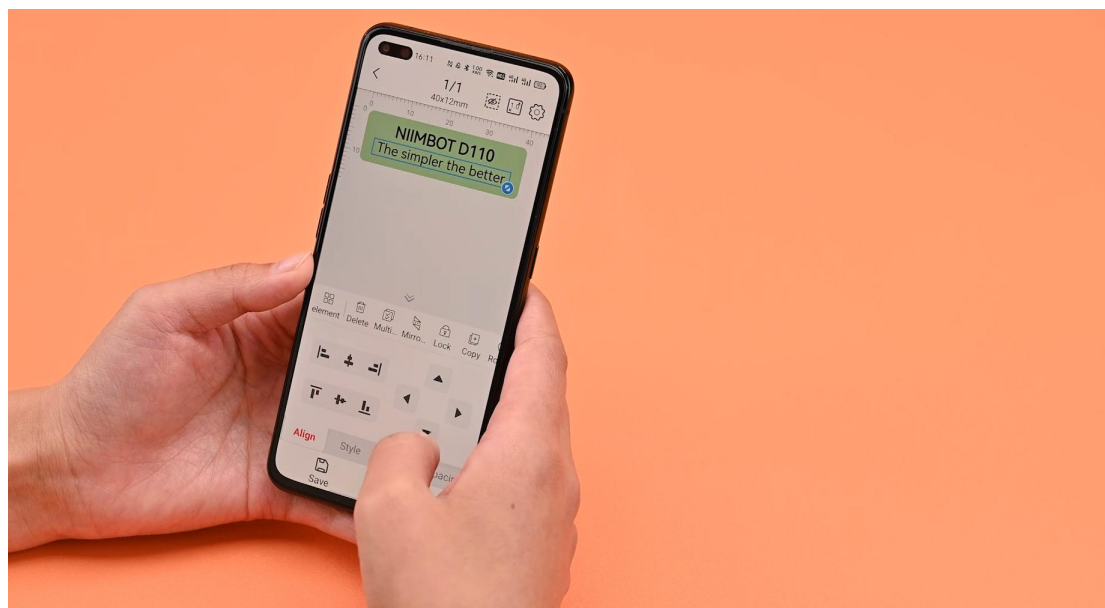
② Double click on the text box to edit



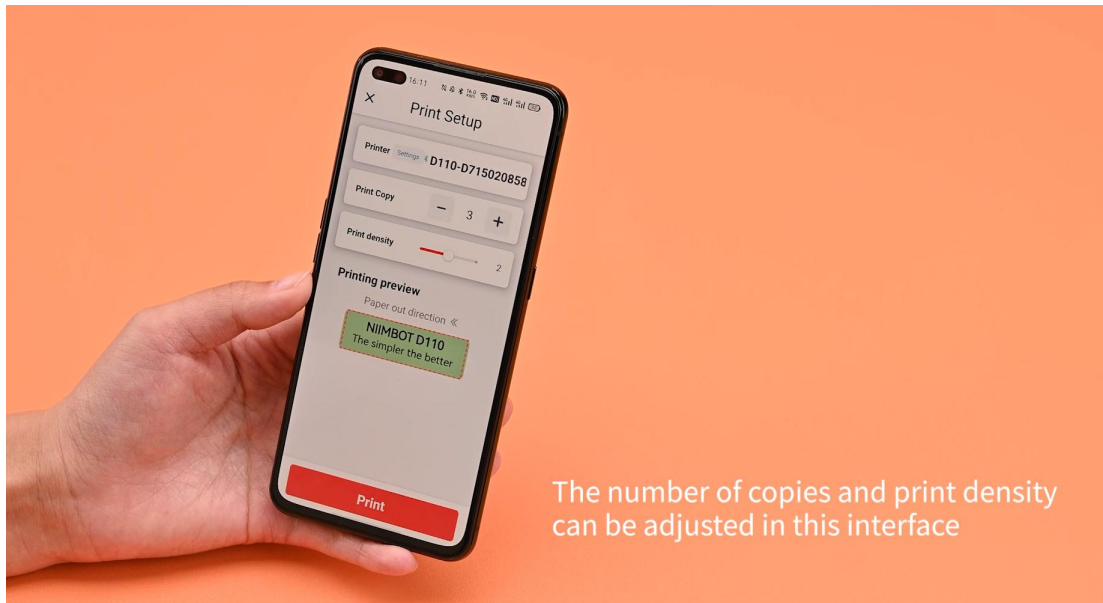
③ You can adjust the word spacing, font size and style



④ Edit the second line as needed



⑤ You can adjust number of print copies and density



⑥ Tap print



5、 How to Contact Customer Service in Case of Problems ?

You can email to service@niimbot.com for more help, thank you!