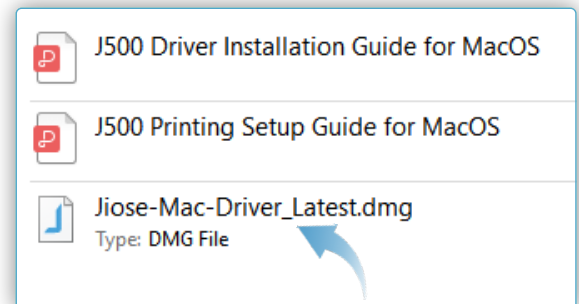


I. MacOS Driver installation

At this folder, you can find the corresponding MacOS Driver >>>
(or visit our website <https://www.jioseprinter.com> to get it)

► Note

Make sure the label printer is connected to your computer with the USB cable and turn ON (I=ON) **before installation.**

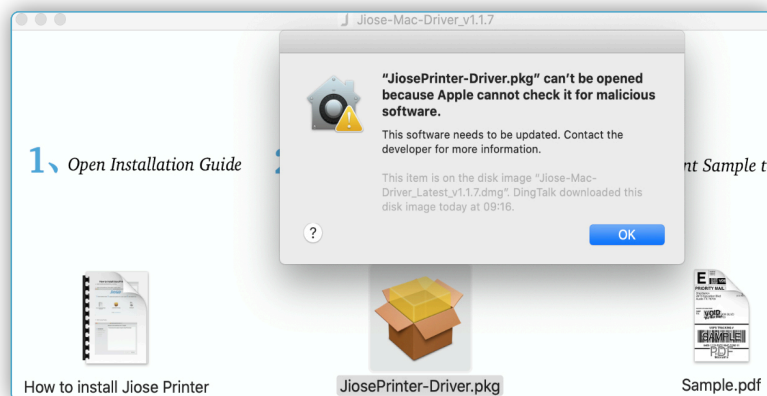


Double click the Mac Driver,
it will show on the right >>>

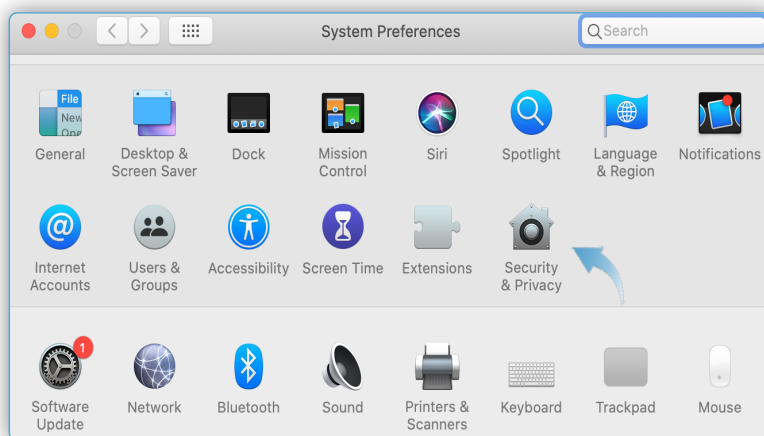
Double click the JiosePrinter-Driver.pkg as the
arrow pointed to install the driver >>>



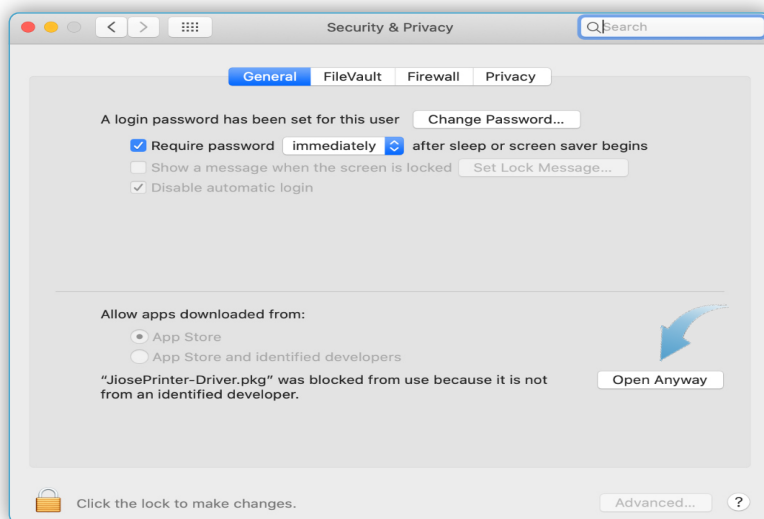
And it may shows the page on the right, please don't worry. You just need to open the access along the lines of steps >>>



Select "System Preferences" and open it >>>

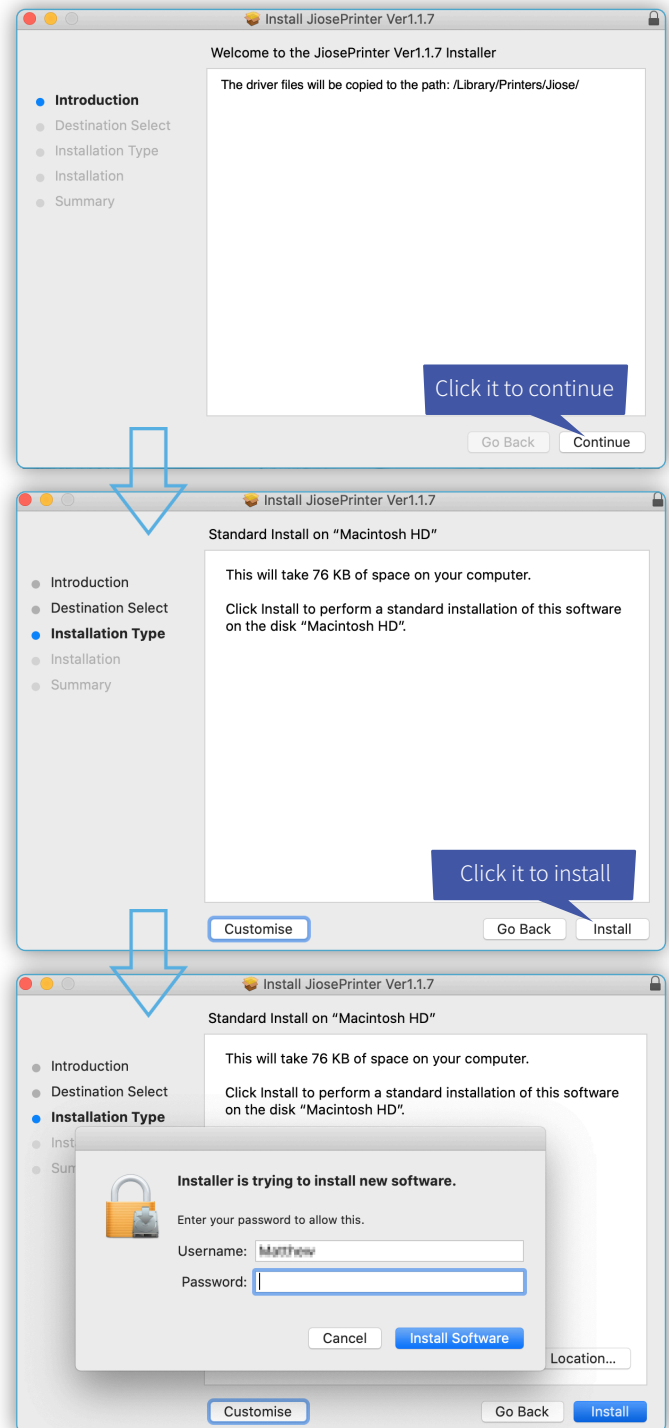


Click the "Security&Privacy" >>>



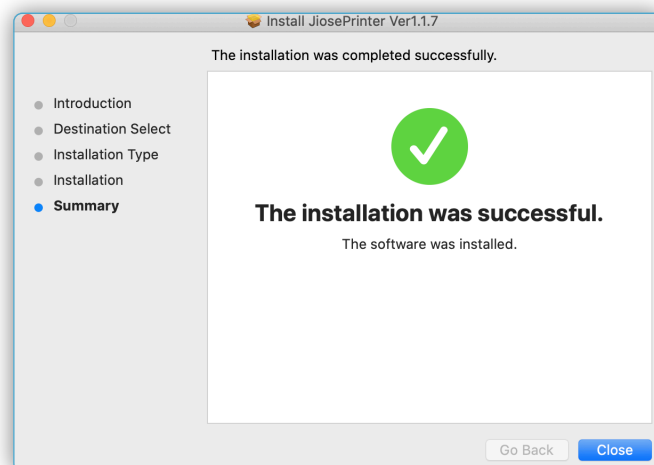
Click the "Open Anyway", then you can continue to install the drive >>>

Double click JiosePrinter-Driver.pkg again to install the driver. Then, it will show on the right >>>



Click "Install Software" and "Install" after entering your Username and Password >>>

Finally it shows the driver is installed successfully, click "Close" to finish the installation >>>



At this moment, the driver has been installed. In addition, it still need you to add the printer to your Mac.

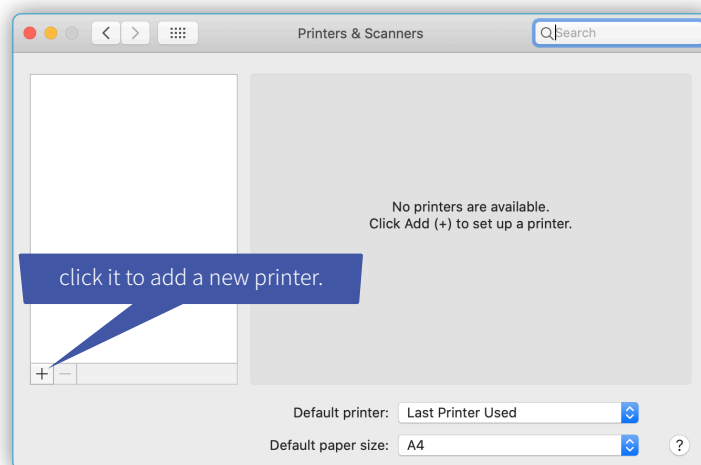
II.Add the Jiose Printer

Firstly, select "System Preferences" and open it it will show on the right >>>

Select "Printers&Scanners" and open it >>>



Then, it will show on the right >>>

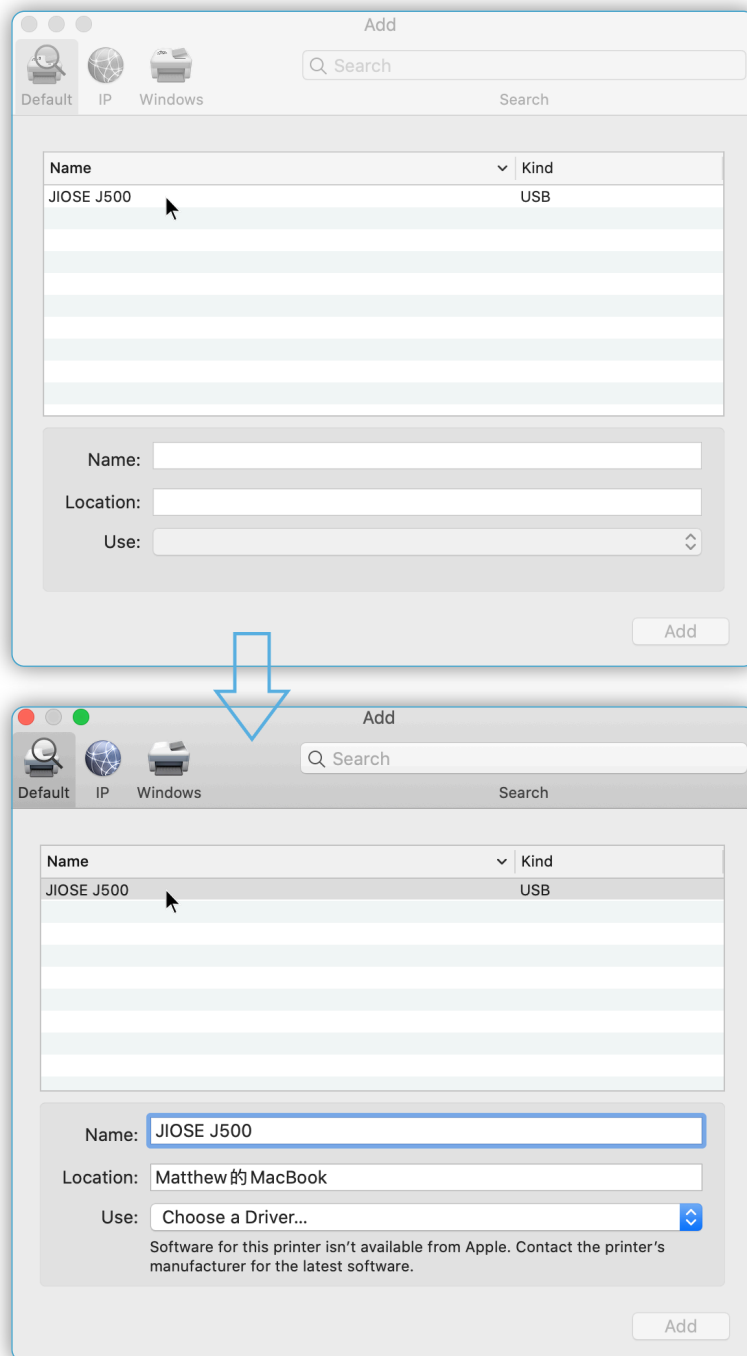


Please select "Jiose J500" >>>

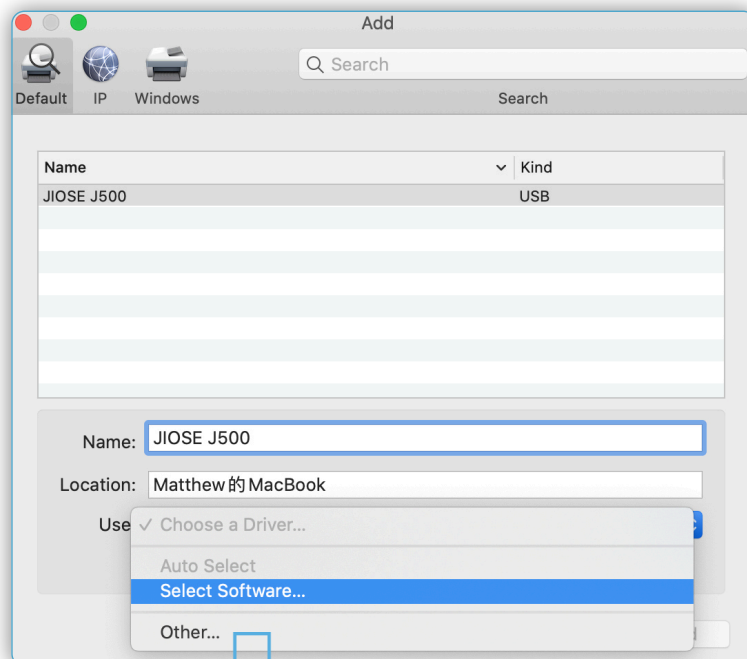
► Note

Please turn ON the label printer so that your computer can recognize it. If Jiose J500 not show up in Mac after installed, please re-connect the usb cabel to your Mac.

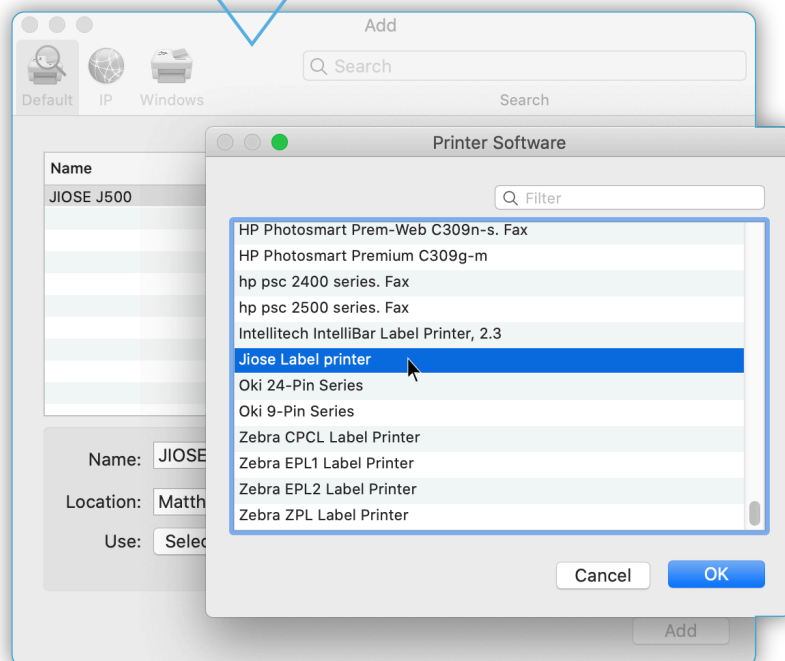
Then, it will show on the right >>>



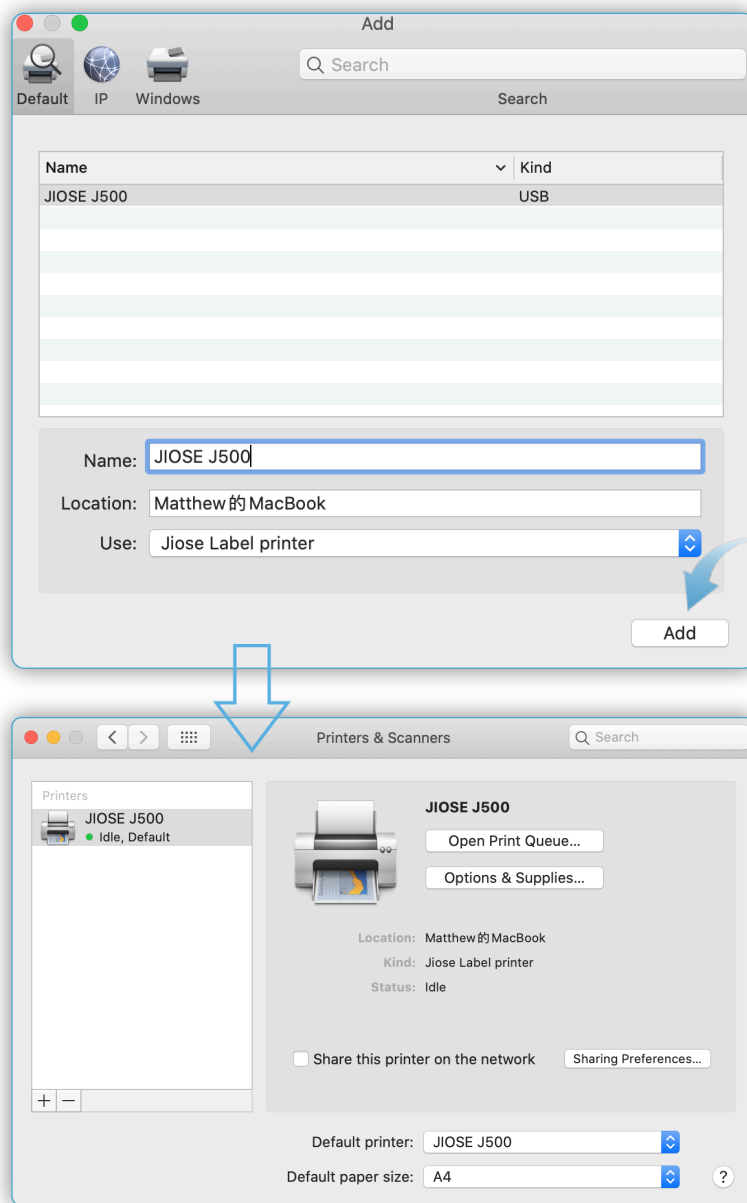
Click the "Select Software" in the "Use" drop-down box >>>



Select the "Jiose Label Printer" and click "OK" to continue >>>



Click "Add", and the Jiose J500 printer is added to your computer successfully >>>



OK, the driver installation is finished, please close the window and turn to J500 Printing Setup Guide for MacOS to learn how to set the parameters to your most used.

