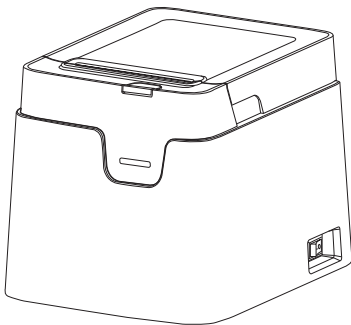




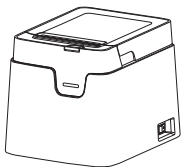
User Manual

CT221D Label Printer

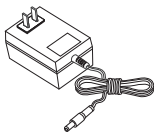


Please read this user manual guide carefully
before operating the product.

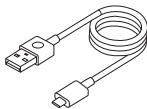
1 PACKING LIST



Printer



Adapter



Type-c USB

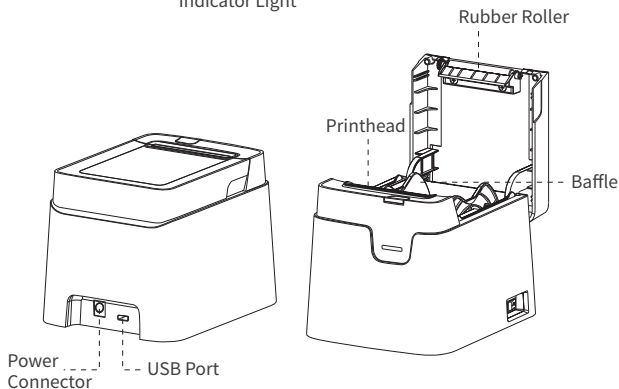
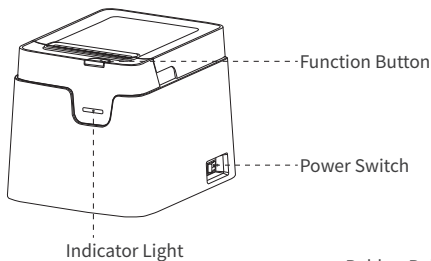


Label



User Manual

2 COMPONENTS





TIPS BEFORE PRINTING

1. Make sure the printer is powered on and toggle the power switch to "I" (**fig.1**)
2. While holding down the base of the machine, pull the other hand up from the fingers on both sides of the printer and open the cover (**fig.2**)

fig.1

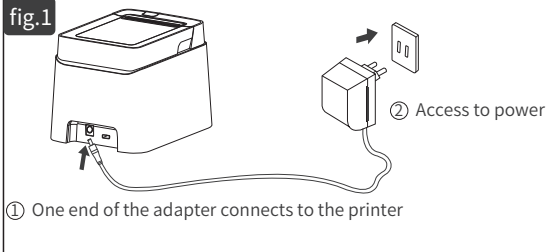
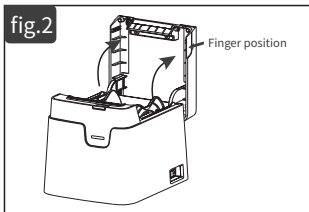


fig.2



3. Remove the label spool and baffle, and put the paper roll into the label spool

- Remove the label spool and baffle from the paper compartment(**fig.1**)

When loading 1.5" (40mm) paper cores, turn the tabs of the baffle inward and make sure that both tabs are inserted into the paper core (**fig.2**)

When loading 1" (25mm) paper cores, the tabs of the baffle will face outward(**fig.3**)

- The steps of loading paper roll are shown as follows(**fig.4**)

Remove the label shaft baffle, move the left side baffle to the leftmost side first, then set the paper roll into the label shaft against the leftmost side. Finally, put on the right side baffle and tighten it properly. Load the paper roll as shown in the figure below. (**fig.5**)

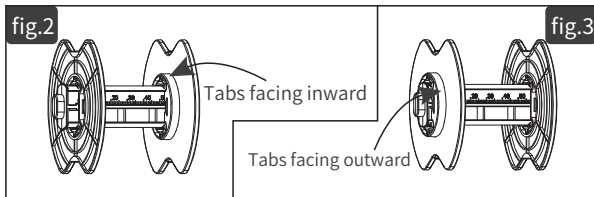
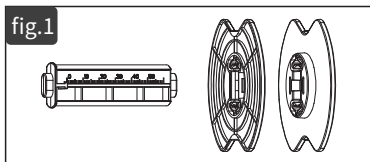


fig.4

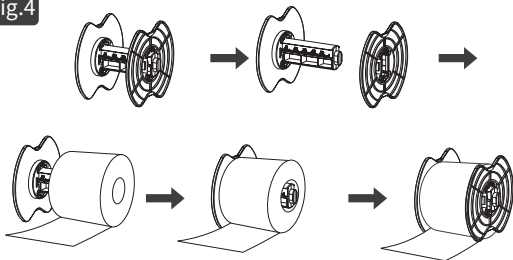
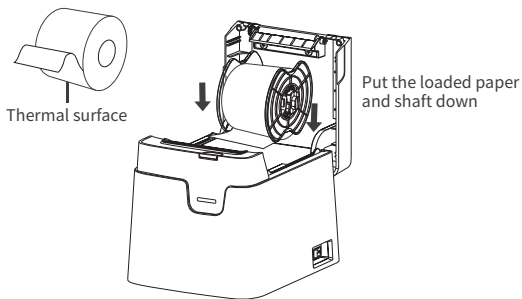


fig.5



KEY FUNCTION

1. Label Mode (Gap Paper)

Button	Function	Operation method
Power Switch	Start UP	Toggle to "I"
	Turn OFF	Toggle to "O"
Function Button	Paper walk	Click the "Function button" once
	Pause Printing	Click the "Function button" once in the print state
	Continue to print	Click the "Function button" once in the pause state
	Print self-test page	Double click on the "Function button" when ready
	Switching working mode	Press and hold the function button in the off state, then toggle the power switch to "I"

2. Label mode and Ticket mode

! NOTE both modes are continuous paper.

Button	Function	Operation method
Power Switch	Start UP	Toggle to "I"
	Turn OFF	Toggle to "O"
Function Button	Paper walking 10mm	Click the "Function button" once when ready
	Continuous paper walk	Press and hold the "Function button" and do not release it when ready
	Print self-test page	Double click on the "Function button" when ready
	Switching working mode	Press and hold the function button in the off state, then toggle the power switch to "I"



INDICATOR LIGHT DESCRIPTION

Standard Version

Indicator Light	Status	Status Description
Blue Light	Slow Blink	Turned ON
Red Light	Slow Blink	Pause Printing
Red Light	Lighting Form	Paper bin is short of paper, top cover is open
Blue Light + Red Light	Alternating flashes	Print head over-temperature protection in progress

Bluetooth Version

Indicator Light	Status	Status Description
Blue Light	Slow Blink	Bluetooth not connected
Blue Light	Lighting Form	Bluetooth connected
Red Light	Slow Blink	Pause Printing
Red Light	Lighting Form	Paper bin is short of paper, top cover is open
Blue Light + Red Light	Alternating flashes	Print head over-temperature protection in progress



SOFTWARE DOWNLOAD

iOS / Android

- Scan the QR code below with a mobile phone to download "**Clabel trade**".
- Please follow the software instructions below to operate the software.



Clabel trade



Download label editing app "Clabel trade" from Google Play Store or Apple APP Store and install it.

⚠ Mobile phone printing ONLY for Bluetooth version.

Windows

Visit website: [https://https://ga.ctaiot.com](https://ga.ctaiot.com) to download "Clabel trade" and driver.



⚠ Download the driver from the above url and read the instructions on driver installation/software installation on the website.

Windows Installation

◆ Step 1

Click to open the downloaded "Clabel trade" installation package.(fig.1)

◆ Step 2

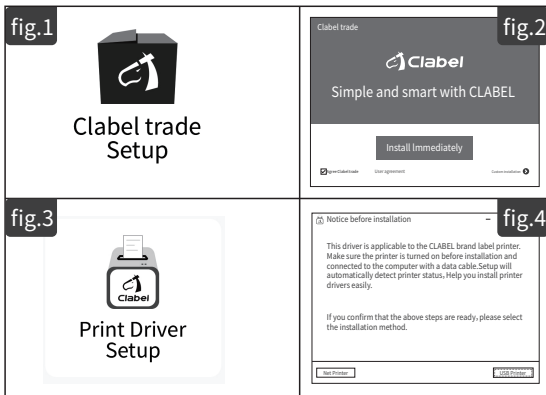
Click"install immediately".(fig.2)

◆ Step 3

Click to open the downloaded print driver package.(fig.3)

◆ Step 4

Click the printer to the computer via USB. Click on the USB printer and follow the prompts to proceed to the next steps.(fig.4)



PRECAUTIONS

Usage Precautions

- Do not disassemble the printer without permission. Please read this manual carefully before use.
- Please do not open the paper bin cover when the printer is working, otherwise there may be unpredictable situations or even damage the printer.
- After printing, the printhead is still in a high temperature state, so do not touch it to avoid burns.
- After printing on thermal printing paper, the time to keep the handwriting is related to the quality of the thermal printing paper. If you want to print documents that need to be kept for a long time, please use long-lasting thermal printing paper. In order to ensure the print quality and product life, it is recommended to use high quality printing paper.
- Avoid water or conductive substances (e.g., metal) from entering the interior of the printer, and turn off the power as soon as this occurs.
- The printer must ensure that the power is turned off during routine maintenance.
- Do not use tools such as tweezers to scratch the print head, print rollers, and sensor surfaces.

Printer cleaning

The printhead should be cleaned promptly if:

- The Print is not clear;
- The Vertical column of print is not clear;
- A Grinding noise is heard while feeding the paper;

Cleaning Steps:

- Switch the printer power off,open the cover and remove any paper;
- Allow the printhead to cool if you had just finished printing;
- Using a soft cotton cloth dipped in absolute ethyl alcohol,gently wipe the dust and particles off the thermal printhead surface;
- Only use the printer for printing until the cleaning alcohol evaporates completely and the cover is closed;

Note

- Make sure to turn off the printer before any maintenance.
- Do not touch the printhead surface with the fingers or metallic objects. Do not abrade the printhead, rubber roller, and sensor surface with tweezers or other tools. Abrasion could damage the printhead.
- Do not use gasoline, acetone, or any other organic solvents for cleaning.
- Only use the printer for printing until the cleaning alcohol evaporates completely

Trouble Shooting

Symptom	Cause	Correction
Bluetooth failed to connect	<ul style="list-style-type: none"> - Low version of mobile phone. - The Bluetooth permission is not enabled. 	<ul style="list-style-type: none"> - Machine only suitable for Android 7.0 or above. - Please turn on the permission for the location in your smartphone.
Print is not centered, offset	<ul style="list-style-type: none"> - The label size is not selected correctly. - Software operation is improper. - Clearance mismatch. - Paper holder is not locked to the left. 	<ul style="list-style-type: none"> - Please select the corresponding label size before printing. - It can be adjusted through the adjustment button on the APP. - Click the paper feed button on the printer, and locate the paper gap. - Go to our product page to watch the video.
The print is not clear and pixelated	<ul style="list-style-type: none"> - Printing appears broken needle. - Font is not clear. 	<ul style="list-style-type: none"> - Print the self-check page and check if the black line on the self-check page is normal. - Select other font in the app, and adjust the font size and bolded font. - Please adjust the print density to make the print more clearly.

FCC Warning Statement

Changes or modifications not expressly approved by the party responsible for compliance could void the user's authority to operate the equipment.

NOTE: This equipment has been tested and found to comply with the limits for a Class B digital device, pursuant to Part 15 of the FCC Rules. These limits are designed to provide reasonable protection against harmful interference in a residential installation. This equipment generates uses and can radiate radio frequency energy and, if not installed and used in accordance with the instructions, may cause harmful interference to radio communications. However, there is no guarantee that interference will not occur in a particular installation. If this equipment does cause harmful interference to radio or television reception, which can be determined by turning the equipment off and on, the user is encouraged to try to correct the interference by one or more of the following measures:

- Reorient or relocate the receiving antenna.
 - Increase the separation between the equipment and receiver.
 - Connect the equipment into an outlet on a circuit different from that to which the receiver is connected.
 - Consult the dealer or an experienced radio/TV technician for help.
- NOTE: This device and its antenna(s) must not be co-located or operation in conjunction with any other antenna or transmitter

RF Exposure Statement

To maintain compliance with FCC's RF Exposure guidelines, This equipment should be installed and operated with minimum distance of 20cm from the radiator to your body. This device and its antenna(s) must not be co-located or operation in conjunction with any other antenna or transmitter

Specification

Project	Parameters
Product Model	CT221D
Printing Method	Thermal
Printing Resolution	230dpi(8dots/mm)
Printing Speed	50mm/s
Paper Outside Diameter (Max)	90mm
Print Head Effective Print Width (Max)	48mm
Label Gap (Min)	≥2mm
Min & Max Label Size	20*10mm (Min) / 58*120mm (Max)
Min & Max Loading Width (Including Backing Paper)	20 (Min) ~58mm (Max)
Paper Positioning Mode	Gap, Continuous
Supported Paper Material	Thermal, Self-adhesive

Shenzhen Dudian Technology Co., Ltd.
11th Floor, Building 3, COFCO Business Park, Dabao Road,
District 67, Xin'an Street, Bao'an District, Shenzhen



RoHS



Made in China