

# Shipping Label Printer

## User Manual



- Read thoroughly before using, keep this for further reference.

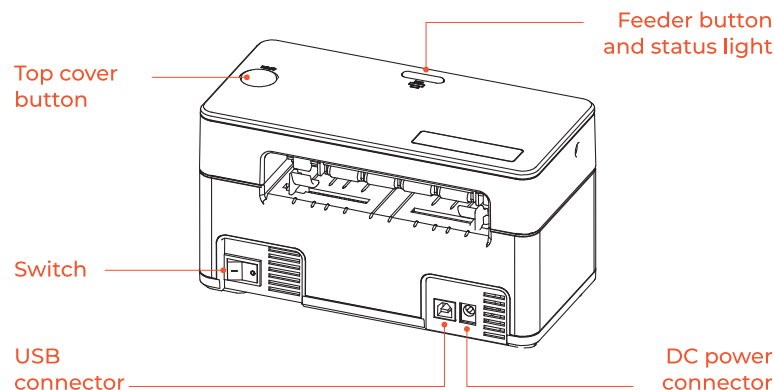
## Contents

<b>1. Product Introduction</b>	2
1.1. Printer Overview	2
1.2. What's in the package?	3
<b>2. Set Up The Printer</b>	4
2.1. Quick printer connection	4
2.2. Loading the label	5
2.3. Driver Installation	6
<b>3. LED Status</b>	13
<b>4. Feed Button Instruction</b>	13
<b>5. FAQ</b>	14
5.1. Why doesn't my shipping label print correctly?	14
5.2. How to print small size labels like Munbyn 2 inches round labels?	16
5.3. Why is the printed label not clear?	16
5.4. Why can't the barcode or QR code on the printed label be scanned?	16
5.5. How to adjust the density and speed in the settings?	16
5.6. How to maintain the print head?	18
<b>6. Specification</b>	19
<b>7. Safety Notices</b>	20
<b>8. FCC Statement</b>	21
<b>9. Tech Support</b>	22

Benutzerhandbuch / Manual de usuario en español  
 Manuel d'utilisation en français / 日本語のユーザーマニュアル

## 1.0. Product Introduction

### 1.1. Printer Overview



Tips	
Top cover button	Press the button to open the printer cover
Feed button and Status light	Feed button function refer to page 8 Status light refer to page 7
DC power connector	Please use the original power adapter to connect the DC power connector and the external power supply.
USB connector	Please use the original USB cable to connect the USB connector and computer. If you are using a MacBook with only Type C port, please use the Type C adapter to connect the original USB cable.
Switch	Please keep it off before connecting the power supply.

## 1.2. What's in the package?



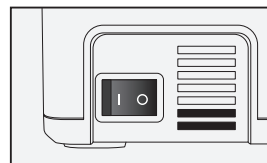
• If accessories are missing or damaged, please contact us.

## 2.0. Set Up The Printer

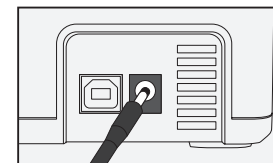
Watch the short setup video at:  
[www.munbyn.biz/unboxing](http://www.munbyn.biz/unboxing)



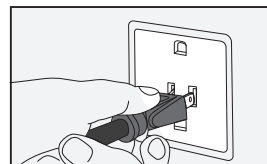
### 2.1. Quick printer connection



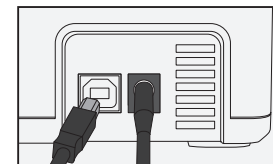
1. Ensure the printer is off



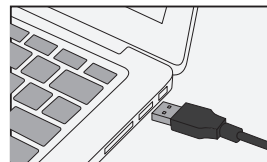
2. Connect the power adapter to the printer



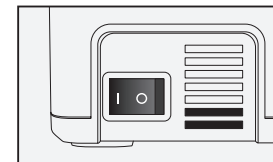
3. Plug the power cable into the socket



4. Connect the USB cable to the printer



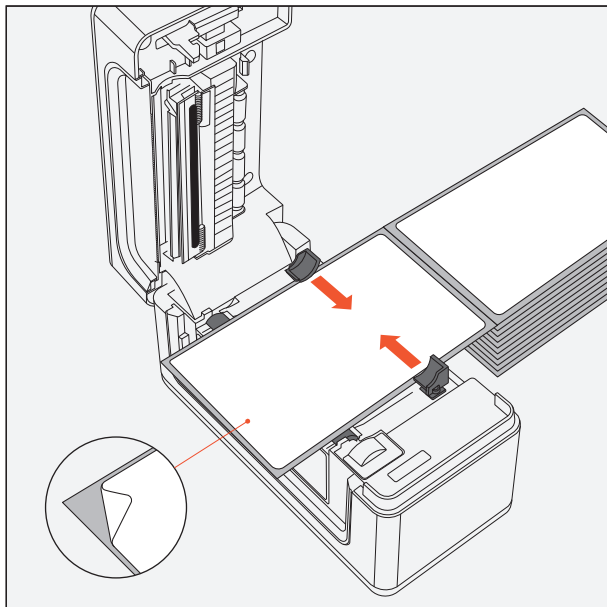
5. Connect the USB cable to the computer



6. Turn the printer on

• Please use the original cable to connect according to the above steps.

## 2.2. Loading the label



Please place the labels with the tear-off side facing up as shown in the picture above.

Please make sure that the label paper you are using is thermal. We recommend that you use Munbyn brand label paper for better printing effects.

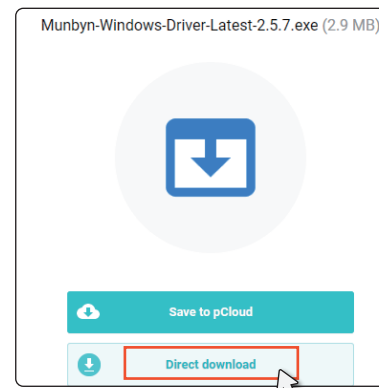
**Note:** If the size of the label paper you use is smaller than 4×6 inches, you need to shrink the paper slot and refer to section 5.2 to modify the size setting.

## 2.3. Driver Installation

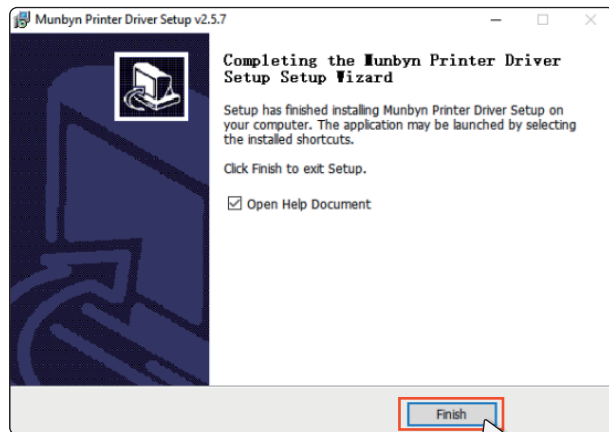
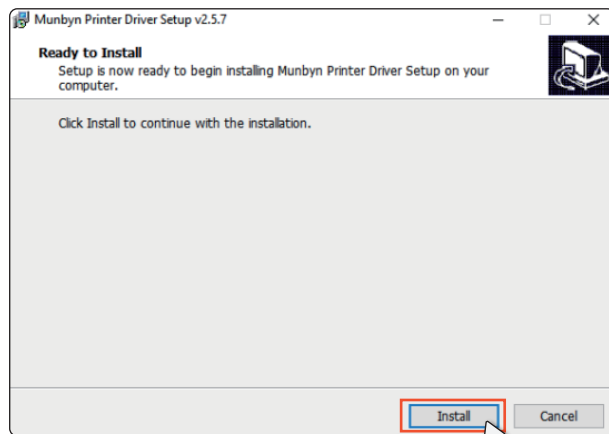
### 2.3.1. Installation for Windows

Insert the USB flash drive into your computer to get the driver or download the latest version of the channel through the link below.  
<https://munbyn.biz/941wind>

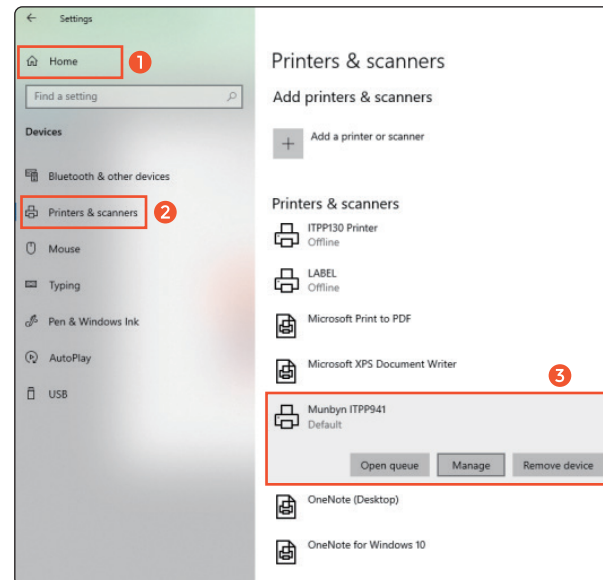
Name	Date modified
ITPP941 FAQ	3/1/2023 1:42 PM
ITPP941 User Manual	3/1/2023 1:42 PM
Munbyn_Driver_Ubuntu.run	3/1/2023 1:42 PM
Munbyn300DPI_Driver_Ubuntu.run	3/1/2023 1:42 PM
Munbyn-Mac-Driver-Latest.dmg	3/1/2023 1:42 PM
Munbyn-Windows-Driver-Latest	3/1/2023 1:42 PM



When the driver file is downloaded, click the driver file to install it, and follow the prompts to complete the installation.



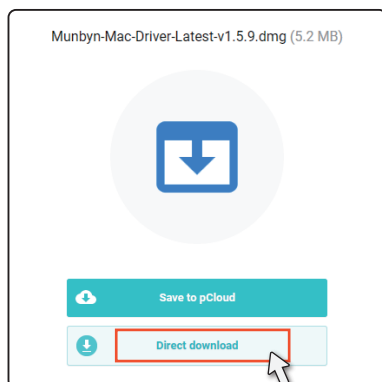
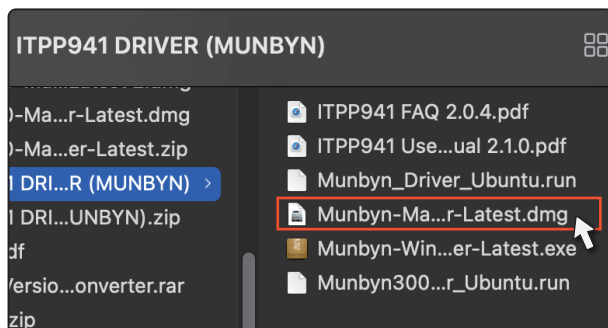
After the driver installation is complete, the printer will appear in your printer list. If Munbyn does not appear on your computer, please restart the printer and computer.



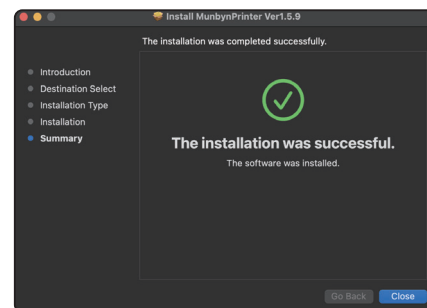
### 2.3.2. Installation for Mac

Insert the USB flash drive into your computer to get the driver or download the latest version of the channel through the link below.

<https://munbyn.biz/941macd>

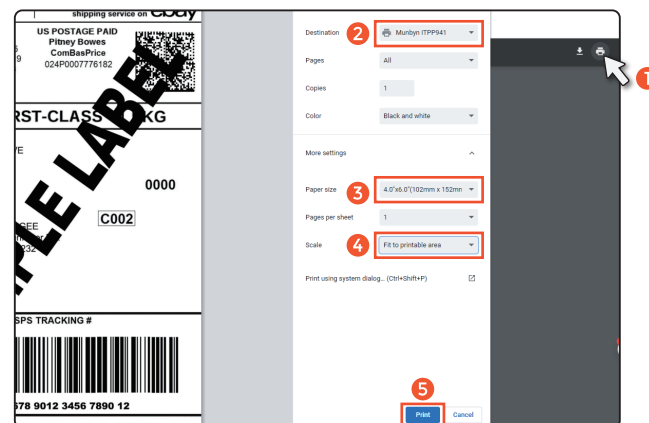


Please double-click on the pkg installer to begin. Follow the installation steps until you receive the "Installation was successful" message shown below.



Finally, you enter the link below to open the shipping label template, and test that the printer can print normally.

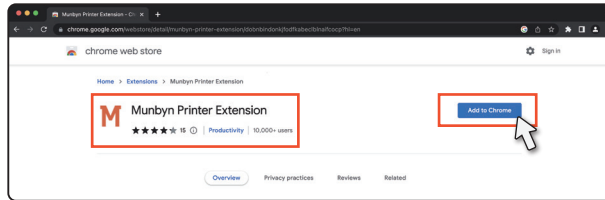
[munbyn.biz/3DA6i6J](https://munbyn.biz/3DA6i6J)



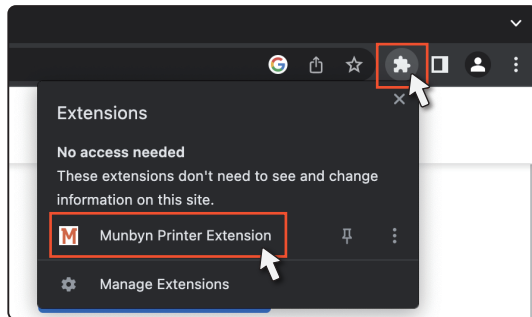
### 2.3.3. Installation for Chromebook

(1) Enter the link below in Chrome browser.

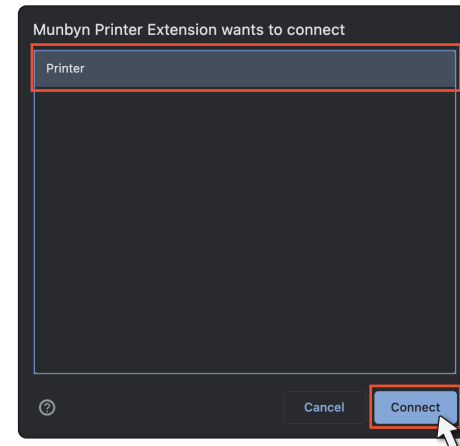
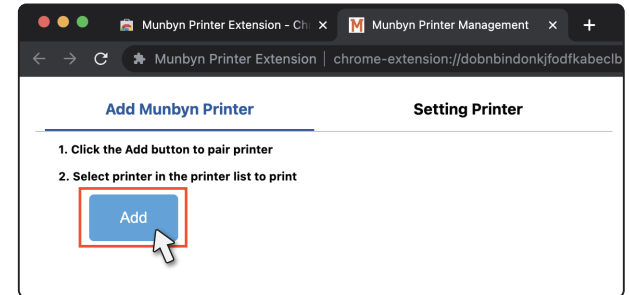
[Munbyn.biz/chrome](https://munbyn.biz/chrome)



(2) Install the Munbyn Extension and open it.



(3) Click Add and select the printer to connect.



### 3.0. LED Status

Light	Description	Troubleshoot
Green	Normal operation	/
Flashing Red (every 2 seconds)	Label paper is not identified	Run automatic label identification
Flashing Red (every 1 second)	Cover is not closed	Check that the cover is completely closed
Flashing Green and Red	Printer head is overheated	Printer will automatically resume once the printer head has cooled down

### 4.0. Feed Button Instruction

Printer status	Feeder button	Function
Standby	Press and hold on until you hear one beep	Automatic label identification
Self-test	Press and hold on until you hear two beeps	Print Self-test page
Standby	Press and hold on until you hear five beeps	Reset Printer

### 5.0. FAQ

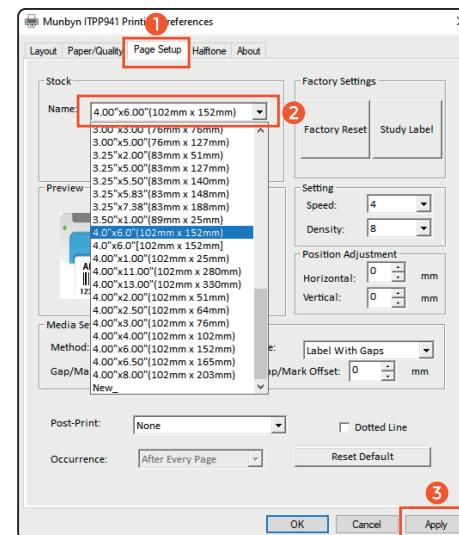
FAQ file, please visit: [www.munbyn.biz/941faq](http://www.munbyn.biz/941faq)

#### 5.1. Why doesn't my shipping label print correctly?

There are four situations:

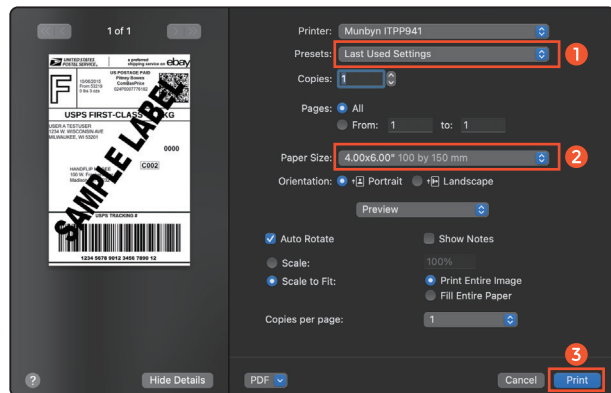
(1) It is not set correctly when switching to print labels of different sizes. Please see the settings below.

For Windows: Go to the "printer preferences" -> "advanced" -> "paper size", and select the correct size for the printer (please select the 4x6 inch or 100\*150mm)





**For Mac:** If you print a 4x6 size page. In the print dialogue, please be sure to select your "Paper Size" appropriately (for example 4 x 6")



In the presets settings, you can permanently save the settings for this printing to avoid repeated settings.

(2) The main reason is that the size of your shipping label file is not 4x6 inches. At this time, you need to set the correct label size. This needs to be set on the shipping platform or online store, depending on your file source.

- You can enter the link below in your browser to watch the setup tutorial for the corresponding platform.

[munbyn.biz/platform](https://munbyn.biz/platform)

- If the platform you use to create the label file does not support the creation of 4\*6 inch format label files, you can download your label file and open it in Acrobat Reader, follow the tutorial linked below to crop the file and print it.

[munbyn.biz/941arv](https://munbyn.biz/941arv)

## 5.2. How to print small size labels like Munbyn 2 inches round labels?

According to section 5.1, set the print size to 2\*2 inches (51\*51mm), then adjust the paper slot to fix the label paper and then print.

Note: The size of the file used for the printer must match the actual size of the label paper, that is, the size of the file should be 2\*2 inches (51\*51mm), otherwise there will be printing offset.

Demo video: [munbyn.biz/printsticker](https://munbyn.biz/printsticker).

## 5.3. Why is the printed label not clear?

Try to choose PDF file format for printing instead of PNG, PIC, and other image formats.

If the font is still not clear, please follow the steps in section 5.5 to increase the printing density and reduce the printing speed.

In addition, the carbon accumulation on the print head will also cause the printed labels to be unclear. Please follow the steps in section 5.6 to clean the print head regularly.

## 5.4. Why can't the barcode or QR code on the printed label be scanned?

Try to choose PDF file format for printing instead of PNG, PIC, and other image formats.

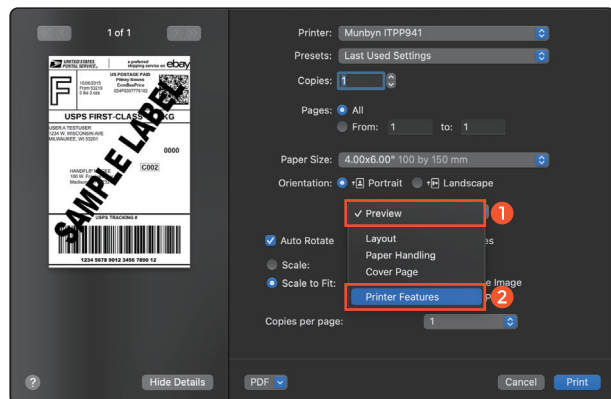
If the font is still not clear, please follow the steps in section 5.5 to decrease the printing density.

In addition, the carbon accumulation on the print head will also cause the printed labels to be unclear. Please follow the steps in section 5.6 to clean the print head regularly.

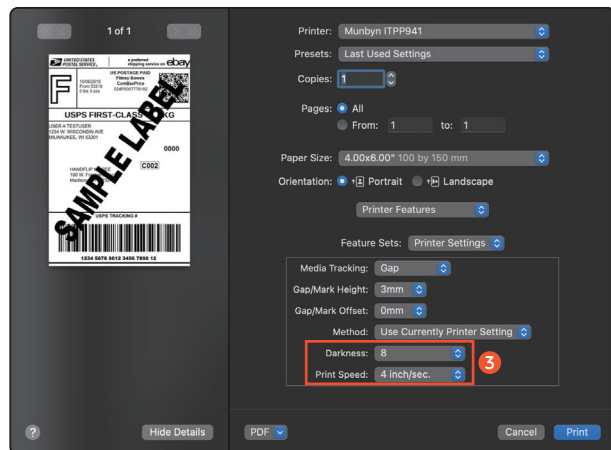
## 5.5. How to adjust the density and speed in the settings?

**For Mac:**

(1) In the Mac's print preview interface, select Preview, then select Printer Features.



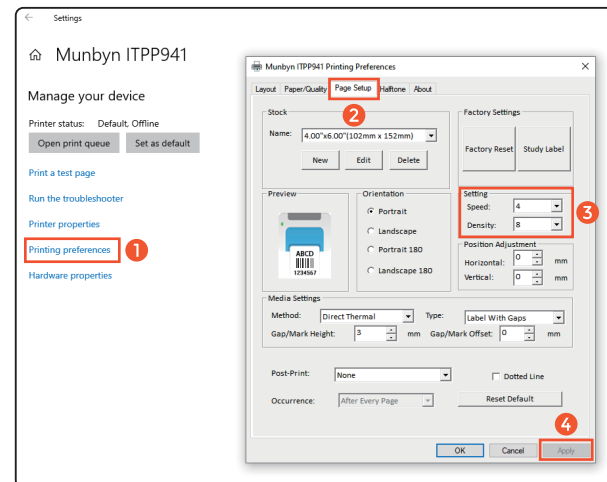
(2) Adjust the Darkness(Density) and speed.



### For Windows:

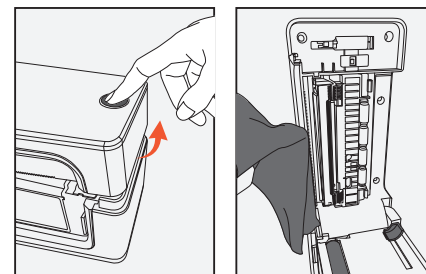
You can do this by entering:

Settings -> Devices -> Printers and Scanners -> Click on 'Munbyn ITPP941' -> Manager -> Printing Preferences -> Page Setup -> Density/-Speed->Apply.



## 5.6. How to maintain the print head?

Follow the steps in the figure below to wipe the print head with a lint-free cloth.



6.0. Specification

Method	Direct Thermal
Resolution	203 dpi/ 300 dpi
Max Printing Speed	150 mm/s
Paper Width	40-110 mm (1.57-4.3 inches)
Paper Thickness	0.06-0.25 mm
Power Adapter	24V / 2A
Printing Life	TPH 100km
Operating Environment	Temperature: -10 to 50 °C Humidity: 10-90% (non condensing)
Storage Environment	Temperature: -40 to 80 °C Humidity: 5-95% (non condensing)
Connection	USB
Weight	1.90 lbs / 0.9 kg
Dimensions	D 198mm * W 96mm * H 109mm

7.0. Safety Notices

The printer head can become very hot after printing labels. Do not touch the printer head.

Do not bend the power cord excessively or place objects on the cord. Do not use the printer if you find any irregularities as these could result in fire or electrocution.

Keep the printer out of reach of children.

Use only approved accessories and do not try to disassemble, repair the unit by yourself.

Please unplug the printer when it is not in use for long

Keep the printer away from water and other objects that could penetrate the components.

Please unplug the printer when it is not in use for long periods.

## 8.0. FCC Statement

This device complies with part 15 of the FCC Rules. Operation is subject to the following two conditions: (1) This device may not cause harmful interference, and (2) this device must accept any interference received, including interference that may cause undesired operation.

Any Changes or modifications not expressly approved by the party responsible for compliance could void the user's authority to operate the equipment.

**Note:** This equipment has been tested and found to comply with the limits for a Class B digital device, pursuant to part 15 of the FCC Rules. These limits are designed to provide reasonable protection against harmful interference in a residential installation. This equipment generates uses and can radiate radio frequency energy and, if not installed and used in accordance with the instructions, may cause harmful interference to radio communications. However, there is no guarantee that interference will not occur in a particular installation. If this equipment does cause harmful interference to radio or television reception, which can be determined by turning the equipment off and on, the user is encouraged to try to correct the interference by one or more of the following measures:

- Reorient or relocate the receiving antenna.
- Increase the separation between the equipment and receiver.
- Connect the equipment into an outlet on a circuit different from that to which thereceiver is connected.
- Consult the dealer or an experienced radio/TV technician for help.

## 9.0. Tech Support

**E-mail:** support@munbyn.com

**WhatsApp:** +86 13352950490

**Phone:** +1 650 206 2250

**Skype:** munbyn

**Support time:**

Monday to Friday 24 hours



MUNBYN provides 24 months warranty and lifetime free service.

If you encounter any issues with the product, please contact the MUNBYN team to promptly receive trouble shooting tips or a replacement.

You can access the link below or scan the QR code to download user manuals in other languages.



Other Languages: [munbyn.biz/941minorlang](https://munbyn.biz/941minorlang)

Deutsches Benutzerhandbuch  
Manual de usuario en español  
Manuel d'utilisation en français  
日本語のユーザーマニュアル