



*At the heart of the image*

DIGITAL SLR CAMERA

# D70



The excitement of Nikon digital SLR photography is now within your reach, and is more powerful than ever!



The spirit behind Nikon's Integrated Imaging Ingenuity is the commitment to continually offer customers the ultimate in optimized photographic technologies born of decades of developing innovative camera and advanced digital technologies. The resulting high performance has earned Nikon its long-held position as a leader among the world's camera makers.

The Nikon D70 represents the highest level of integrated Nikon technologies, and now the most advanced personal digital SLR is ready to fulfill your dreams. Unrivalled performance, ease of operation, exciting personal control and Nikon's Total Imaging System makes digital photography fast and easy, and frees your imagination to make great pictures you'll love to show everyone.

Whether you are an experienced photographer or about to begin your adventure in digital SLR photography, you are going to enjoy the advanced features, high performance and superb quality of the new Nikon D70 digital SLR!



**Nikon D70**





**The Nikon DX Format image sensor**

The Nikon DX Format CCD image sensor is optimized to deliver a wide dynamic range that produces great pictures with high resolution and superbly sharp details. With 6.1 effective megapixels, the sensor produces 3,008 x 2,000-pixel images so you can make large prints and crop for creative detail. Each of the sensor's pixels incorporates individual micro-optics that precisely align the image from the camera's lens to optimize performance, whether using AF Nikkor lenses already owned or high quality DX Nikkor lenses designed as digital dedicated optics. All Nikon digital SLR cameras employ the DX Format, establishing high performance and uniformity you'll appreciate as your Nikon digital SLR system grows.



**High performance digital processing**

Nikon programmed the D70's advanced System LSI processor for next generation performance to produce the finest in vivid colors and clarity, optimized auto white balance, auto tone and color control, and to run real-time processes that diminish digital noise in long exposure shots for clearer results. The LSI and its double-path bus also maximizes system performance for fast NEF (RAW) file compression, high memory buffer speed, fast simultaneous recording of JPEG and NEF files, and near-instant LCD image display.

**Accurate white balance**

Now optimized for the D70, Nikon's acclaimed 3D Color Matrix Meter with 1,005-pixel sensor takes data from the CCD image sensor for highly precise control over white balance. In addition to the auto TTL white balance setting, you can choose from six different manual modes with fine-tuning, or preset white balance. White balance bracketing is also available.

# Accurate, vivid color

Show friends and family a D70 picture and watch them beam in response to a smile that will last a lifetime. Vivid color and sharp details with high resolution and a wide dynamic range help enhance your pictures and preserve every precious moment. They also form a key part of the D70's hallmark performance. Record your memories with the D70 and create smiles all around!

• Image quality mode: RAW (NEF) • Lens: AF-S VR Zoom-Nikkor 70-200mm f/2.8G IF-ED  
• Exposure mode: Digital Vari-Program [Portrait], 1/800 second, f/2.8 • White balance: Auto • Sensitivity: ISO-equivalent 200



• Image quality mode: RAW (NEF)  
• Lens: AF-S VR Zoom-Nikkor 24-120mm f/3.5-5.6G IF-ED  
• Exposure mode: [M], 1/500 second, f/11  
• White balance: Auto  
• Sensitivity: ISO-equivalent 200





### Quick response

Turn on the D70 and be quickly surprised. It's ready to shoot right away, virtually without delay, so you never miss that great shot. The D70 starts faster, shoots faster, processes faster, buffers more images and even displays your pictures on the bright LCD monitor almost instantly. No other camera in its class compares!

### 144-picture 3fps continuous shooting

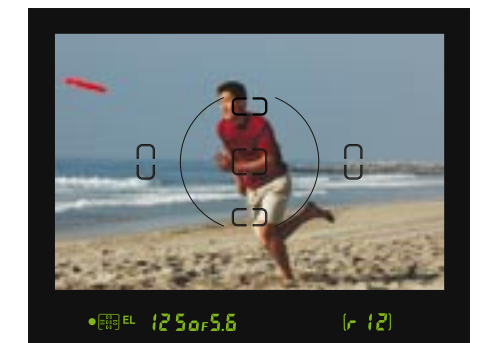
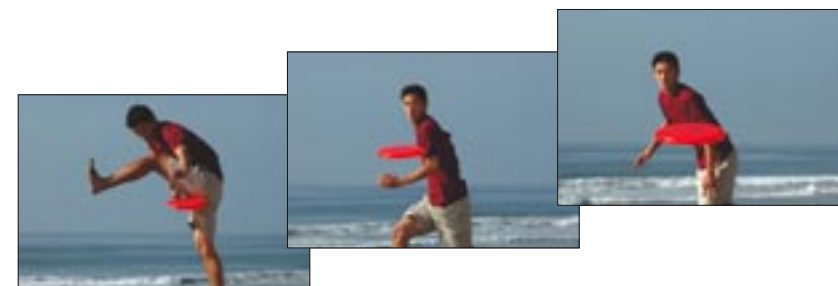
The D70 can shoot a rapid 3 frames per second for a continuous burst of 144 pictures\* thanks to improved buffer memory handling, faster image processing, increased memory card access speed and greater system bus bandwidth.

\*When using JPEG NORMAL - Large settings, and a SanDisk SDCHF256MB (Type II) CompactFlash™ card

### Fast, precise 5-area AF system

Nikon's 5-area Multi-CAM900 autofocus with cross-type sensor in the center ensures a fast and precise focus lock and covers a broad area of the frame. Low light performance is excellent, and a convenient AF-assist illuminator adds additional help in dark situations. The handy multi selector on the camera's back makes it easy to select a specific focus area, and the selected area can be confirmed on the top control panel as well as the focus indicator in the viewfinder display. When shooting moving subjects, predictive focus tracking and Lock-on™ help you achieve accurate focus by shifting instantly and automatically from your selected focus area to the one into which the subject has moved.

• Image quality mode: RAW (NEF) • Lens: AF-S VR Zoom-Nikkor 70-200mm f/2.8G IF-ED  
• Exposure mode: [M], 1/1250 second, f/5.6 • White balance: Auto • Sensitivity: ISO-equivalent 200



## Ready to shoot when you are

Precious shutter chances often last for only a fleeting instant.

Whether photographing the action on the beach, other sports, or children or animals in motion, your camera must respond immediately if it is going to turn those experiences into pictures that form lifelong memories. The D70's high performance assures you will capture the heartbeat of the moment.





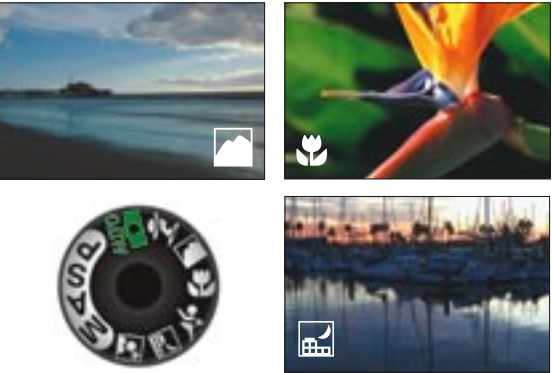
• Image quality mode: RAW (NEF) • Lens: AF-S DX Zoom-Nikkor 12-24mm f/4G IF-ED  
• Exposure mode: [M], 1/2 second, f/22 • White balance: Auto • Sensitivity: ISO-equivalent 200

# Beautifully Exposed

The D70 combines versatile personal control and image enhancement options with seven new Digital Vari-Program selections for powerful automatic operation that helps you achieve great results with smooth gradations and rich tones, under even complex shooting conditions. Because when that special moment arises, you want to be able to capture the mood without fumbling with settings and without distracting your enjoyment of the scene.

## Automated Digital Vari-Program

Whether you are still learning how to make great pictures or an experienced photographer in a hurry to capture the moment, Nikon's seven new Digital Vari-Programs make the D70 the right choice. Select the program to match your shot and it automatically optimizes white balance, sharpening, tone (contrast), color, saturation and hue for great results. For example, select **Portrait** for beautiful skin tones and soft background focus that highlights your subject; or choose from **Auto**, **Landscape**, **Close-up**, **Sports**, **Night Portrait**, or **Night Landscape** for similar automated performance.



## Image enhancement options

Easy to set image enhancement options optimize sharpening, tone (contrast), color, saturation and hue while using Auto Multi Program [P], Shutter-Priority Auto [S], Aperture-Priority Auto [A], or Manual [M] exposure modes to best match the scene or intended use for the picture. Choices include Normal, Vivid, Sharp, Soft, Direct print, Landscape or Custom optimization.

## Making available light work for you

Select ISO speeds from 200 to 1600 to assure broad performance through a wide range of lighting conditions. Or, opt to let AUTO ISO select the right sensitivity for the shot across the same range of lighting. Shutter speeds from 30 to 1/8,000 sec. provide broad creative control, and exposure compensation and auto exposure bracketing give you the versatility of choice. Three optimized TTL metering modes include Nikon's 3D Color Matrix Meter that uses the 1,005-pixel RGB sensor, variable Center-Weighted Meter and a choice of five Spot Meters.





• Image quality mode: RAW (NEF) • Lens: AF-S VR Zoom-Nikkor 24-120mm f/3.5-5.6G IF-ED  
• Exposure mode: [M], 1/1,000 second, f/11 • White balance: Auto • Sensitivity: ISO-equivalent 200

# Enjoy even the subtlest details

Pictures of cherished family members and loved ones form memories that last a lifetime. Great pictures require every aspect of the system to perform together optimally, and Nikon's Total Imaging System is designed for this very purpose. Every feature and innovative technology in the D70 works harmoniously with all Nikon system components to ensure true Nikon quality and stunning detail worthy of each shot.



• Image quality mode: RAW (NEF)  
• Lens: AF-S DX Zoom-Nikkor 18-70mm f/3.5-4.5G IF-ED  
• Exposure mode: [M], 1/13 second, f/8  
• White balance: Auto  
• Sensitivity: ISO-equivalent 200

## AF Nikkor lenses

Every image begins with a lens, and none equal the performance of AF, AF-S and dedicated DX Nikkor lenses. Ranging from a 180° 10.5mm f2.8 Fisheye through 600mm Telephoto, this exclusive lineup of Zoom-Nikkor and fixed focal length lenses is designed to perfectly match the D70's performance.



## Built-in pop-up Speedlight with i-TTL flash control

The built-in Speedlight automatically pops up and fires when natural lighting is inadequate or to add Balanced Fill-Flash when there is strong backlighting. i-TTL improves the accuracy of the monitor pre-flash used by the system's 1,005-pixel RGB sensor to evaluate flash exposure and perform an automatic balanced flash. The D70 lets you shoot at synchronized speeds up to 1/500 second for great fill effects under brighter light conditions. FV Lock maintains the measured flash value while recomposing the shot so you still achieve the appropriate flash output for the subject. And, flash exposure compensation lets you increase or reduce flash output for yet finer control over results.



## Support for the Creative Lighting System

A big bonus of the D70's built-in flash is that it adopts Nikon's exclusive i-TTL flash control of the Creative Lighting System. You can use the built-in speedlight as a remote commander that controls one group of multiple wireless SB-600 or SB-800 Speedlights for new opportunities in flash picture taking not realized with lesser systems. Alternately, you can attach an SB-800 and control up to 3 wireless remote groups, with each group consisting of any number of SB-800 or SB-600 Speedlight units.



## Ergonomics for efficient handling and operational ease

The light, compact body fits the hand well and ensures easy access to controls, which themselves are designed and logically placed for ease of use. This includes the new Mode dial, as well as the Main and Sub Command Dials that facilitate easy control over settings and smooth single-handed operation. The bright optical viewfinder features high magnification, exclusive On-Demand grid lines, and a digital readout along the bottom that displays valuable information on settings and camera status. Important settings can also be confirmed quickly on the large LCD data control panel atop the camera body. Using easy to understand keywords, the large LCD monitor displays menus with bigger fonts and icons. Vertical shots are automatically rotated on playback for viewing ease on the monitor or your TV. The high-energy EN-EL3 rechargeable lithium-ion battery delivers the power to shoot up to 2,000 images per charge\*. And, the D70 can also be run using disposable CR2 batteries.

\*Achieved under following test conditions:  
Fully charged EN-EL3 battery; temperature of 20°C/68°F; Zoom-Nikkor AF-S DX 18-70mm f/3.5-4.5G IF-ED lens (VR off); continuous shooting mode; continuous-servo autofocus; image quality set to JPEG BASIC; image size set to Medium; shutter speed 1/250 sec.; shutter release pressed halfway for three seconds and focus cycled from infinity to minimum range three times with each shot; monitor turned on for five seconds after six shots and then turned off; cycle repeated once exposure meters have turned off.

### Diverse playback options

LCD playback options include single frame, 4 or 9-image thumbnail display, playback zoom with scroll (up to 4.7x), automatic slide show, histogram indication, and highlight point display. The supplied video cable can also be used to connect to your television or a VCR for playback or recording.

### Depth of Field preview button

The Depth of Field preview button aids in achieving compositional accuracy by letting you confirm the effects of aperture settings through the viewfinder. (Operates only with Nikon CPU lenses.)

**Three color modes** Choose the optimized color space that matches your subject or intended use.

**Mode Ia:** Renders natural-looking skin tones out of the camera. (sRGB)

**Mode II:** Realizes a wider color range suited for processing or retouching. (Adobe RGB)

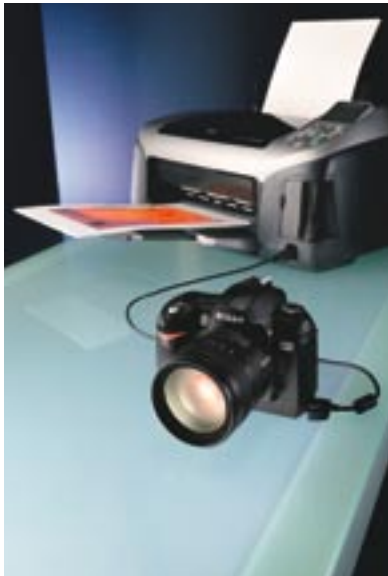
**Mode IIIa:** Renders vivid landscape and flora colors out of the camera. (sRGB)

**Versatile custom settings** A total of 25 custom settings allow you to personalize the operation of your D70 to match your shooting style or the demands of different shooting conditions.

The custom settings menu is displayed on the LCD monitor in easy to understand fashion, and selections are made using the handy multi selector. You can also display help dialogs with the press of a button that describe each setting.

## The D70 Digital Photo Process

Making pictures can be as simple as setting the D70 to one of its automated modes and then printing directly to any of its automated modes and then printing directly to any **PictBridge** compatible printer via the supplied USB cable. However, the unlimited potential of the D70's high performance will inspire you to develop your processing skills. The steps that cover the entire process, from concept to final display, are commonly referred to as “workflow”; and each Nikon product is designed to help you optimize your personal workflow. Software is a key component of effective workflow.

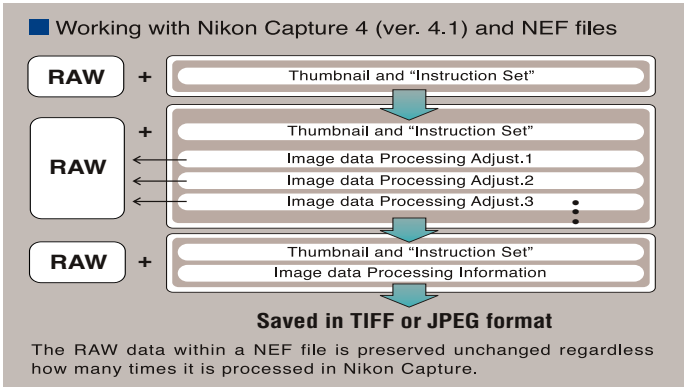


## Nikon Software (Supplied)

The supplied software's versatile feature set and user-friendly interface makes it easy to transfer images to your PC or Mac, and to browse, organize and share them. Pictures taken in vertical orientation are automatically rotated. Controls for retouch tasks, including brightness and red eye correction, are intuitive and fast. View and print individual files, attach them to mail, or upload them to the Internet. With support for JPEG, TIFF and NEF (RAW) files, the software works in close unison with Nikon Capture 4 as the ideal companion to its powerful feature set.

## Experience the full power of NEF

Nikon's original NEF (Nikon Electronic Format) image file helps you make great pictures even greater. Each NEF file stores the RAW image data captured by the D70's image sensor, a thumbnail image, and an “Instruction Set” that contains the camera's original settings. Changes made never affect or degrade the quality of the archived RAW data. The original 12-bit data is processed by Nikon Capture 4 and displayed using a full16 bits per channel, so tonal and other color corrections can be made with smoother fidelity. You can save any changes as a new Instruction Set, as a 48-bit TIFF file, or as a JPEG file when easy sharing via the Internet is the priority. Another advantage is that NEF files are designed to ensure forward compatibility, so they can take advantage of any new features added to future versions of Nikon Capture.



## Nikon Capture 4\* (Version 4.1, Optional)

Nikon Capture 4 offers a unique image-editing environment and is the only program that gives you full power to edit NEF files. You can go back and adjust or correct virtually any aspect of the image's settings as though retaking the original shot, all without altering the original image data or its settings; and any number of variations can be saved efficiently as additional Instruction Sets. You get the best of versatile image editing combined with precious savings in hard disk space.

- **Support for NEF, TIFF and JPEG file types** - Nikon Capture 4 fully supports browsing and editing of NEF (RAW), TIFF and JPEG files.
- **Digital DEE™** applies the appropriate amount of dodge or burn to specific areas of a photo to bring out the highlights and achieve an overall exposure balance. \*Digital DEE™ is a technology developed by Applied Science Fiction.
- **Fisheye-to-Rectilinear Image Transformation** transforms fisheye 180° diagonal angle of view images made with the AF DX Fisheye-Nikkor 10.5mm f/2.8G ED lens into a choice of two modes of ultra-wideangle images.

## Software

• **Image Dust Off** uses a reference image made in the camera to map dust on the sensor and then automatically remove its effect from NEF images. It's another powerful advantage of shooting in NEF, and another Nikon exclusive.

### Enhanced batch processing

A wide variety of image adjustments and corrections can be automatically applied to any number of files in a folder for great savings in time when working with many photos shot under like conditions.

### Remote camera control

Nikon Capture 4 can control most shooting settings for the D70, including bracketing, remotely from your PC or Mac via the USB interface, and images can be downloaded directly to the computer while shooting.

### New features in Nikon Capture 4 (Version 4.1)

• **Multi Image Window** displays images from multiple folders as a string of thumbnail “index” images above a larger window containing the currently selected image for easier browsing, selection and editing.

• **Color moiré reduction** eliminates the moiré effect that sometimes appears when shooting tightly spaced parallel lines.

• Support for the D70's updated color modes.

• Greater speed and convenience gained by eliminating the need for save operations to complete before returning to work.

• Filter plug-in support for greater expandability and versatility.

Plug-ins from NIK Multimedia, Inc. are already scheduled for release.

• New processing tools, including the LCH editor and Color booster.

• **Direct JPEG to NEF conversion** creates smaller NEF files for substantial space savings by converting without opening and expanding the original.

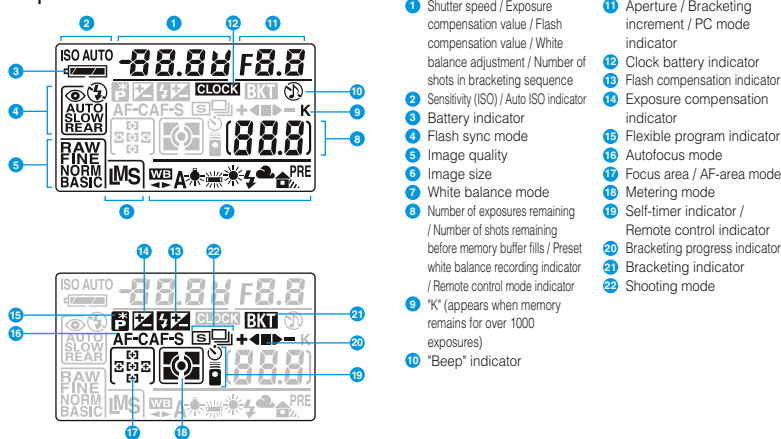
• “Save and open with application” choice added to File menu.

• Option to save only selected parameter settings to an Instruction Set.

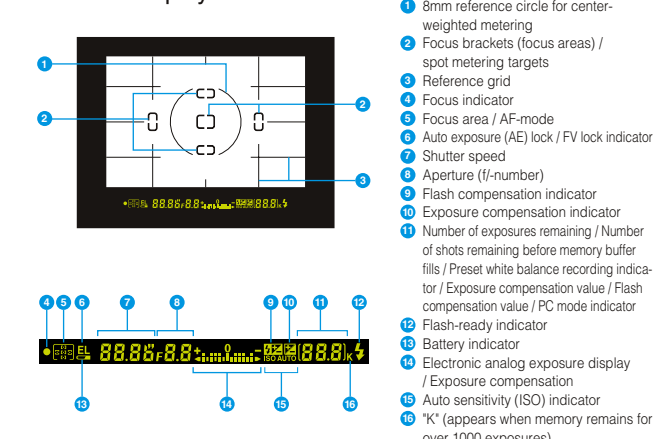




### Top Control Panel



### Viewfinder Display



### Nikkor Lenses

The D70 employs the Nikon F lens mount for seamless compatibility with the dozens of high-quality AF Nikkor lenses long favored by photographers around the world for their superb color, razor-sharp images, and consistently excellent autofocus performance. Designed exclusively for use with DX Format SLR cameras, DX Nikkor lenses deliver a wider picture angle, higher performance, and outstanding center-to-edge-to-corner image quality, while realizing smaller and lighter designs. Nikkor lenses have a picture angle comparable to that of a 35mm [135] format lens with a 1.5x factor.

### AF-S DX Zoom-Nikkor

#### 18-70mm f/3.5-4.5G IF-ED NEW

Designed as a perfect match for use with the D70 and to combine top performance with outstanding value, this new compact standard zoom lens with fast aperture covers the highly practical focal length range of 18-70mm.



### Speedlight System

Powerful, full-featured with i-TTL flash control for use with Nikon's Creative Lighting System.



Speedlight SB-600  
NEW †AVAILABLE SOON



Speedlight SB-800

### Accessories

#### • COOLWALKER MSV-01 NEW †AVAILABLE SOON

New compact digital photo storage device featuring view-anywhere convenience and versatile compatibility.

#### • Wireless (IR) Remote Control ML-L3

Trigger the shutter remotely to use slow shutter speeds without disturbing the camera.

#### • Hot Shoe Sync Terminal Adapter AS-15

Adds a standard PC sync connector that makes it easy to connect external studio Speedlights.

#### • Protective LCD Cover (Supplied)

#### • Semi-Soft Case CF-D70

### Power Accessories

#### • Rechargeable Li-ion Battery EN-EL3 (Supplied)

#### • Quick Charger MH-18 (Supplied)

#### • Multi Charger MH-19

#### • AC Adapter EH-5

#### • CR2 Battery Holder MS-D70 (Supplied)



COOLWALKER MSV-01

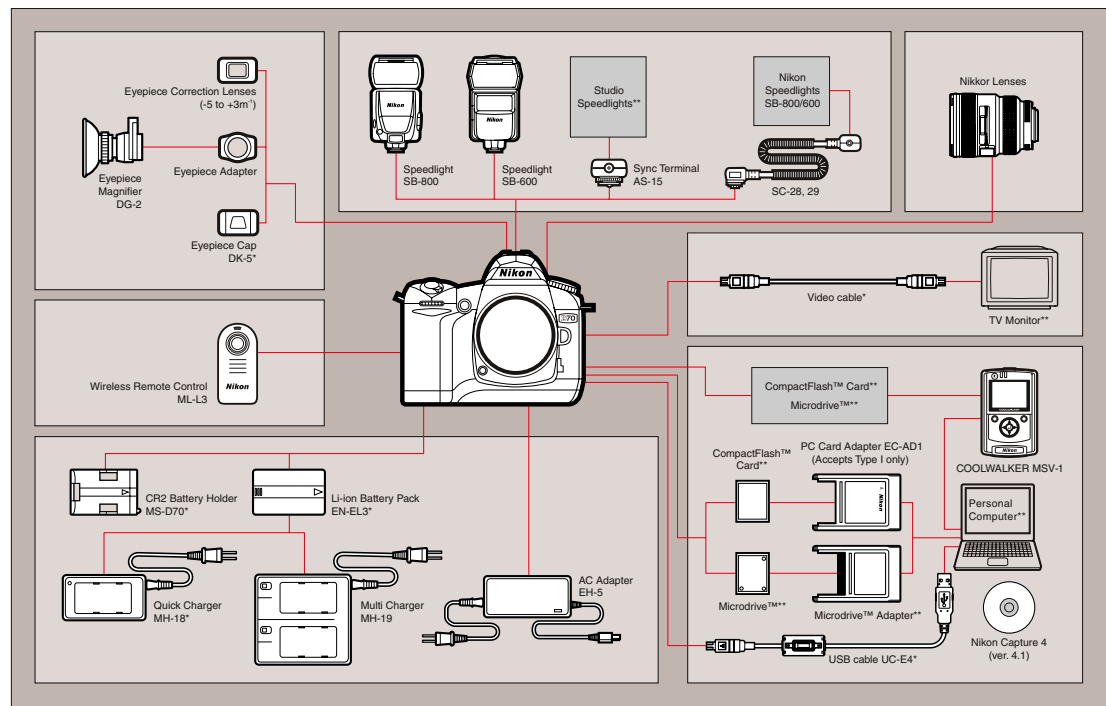


CR2 Battery Holder MS-D70



Wireless (IR) Remote Control ML-L3

### System Chart



\*Supplied accessories  
\*\*Non-Nikon products

### Function Compatibility Chart (iX-Nikkor lenses cannot be used)

Camera setting		Focus		Mode		Metering	
		AF	M (with electronic rangefinder)	M	DVP, P, S, A, M	3D	Color
CPU lenses <sup>1</sup>	Type G or D AF Nikkor <sup>2</sup> AF-S, AF-I Nikkor	√	√	√	√	√	√
	PC-Micro Nikkor 85mm f/2.8D <sup>4</sup>	—	√ <sup>5</sup>	—	√	√	√
	AF-S / AF-I Teleconverter <sup>6</sup>	√ <sup>7</sup>	√ <sup>7</sup>	√	√	√	√
	Other AF Nikkor (except lenses for F3AF)	√ <sup>8</sup>	√ <sup>8</sup>	√	√	—	√
	AI-P Nikkor	—	√ <sup>9</sup>	√	√	—	√
Non-CPU lenses <sup>10</sup>	AI, AI-S, or Series E, AI modified Nikkor AI modified	—	√ <sup>9</sup>	√	√ <sup>11</sup>	—	—
	Medical Nikkor 120mm f/4	—	√	√	—	√ <sup>12</sup>	—
	Reflex-Nikkors	—	—	√	√ <sup>11</sup>	—	—
	PC-Nikkor	—	√ <sup>5</sup>	√	√ <sup>11</sup>	—	—
	AI-type Teleconverter	—	√ <sup>7</sup>	√	√ <sup>11</sup>	—	—
	PB-6 Bellows Focusing Attachment <sup>13</sup>	—	√ <sup>7</sup>	√	—	√ <sup>11</sup>	—
	Auto extension rings (PK-series 11-A, 12, or 13; PN-11)	—	√ <sup>7</sup>	√	—	√ <sup>11</sup>	—

1 iX Nikkor lenses cannot be used.  
2 Vibration Reduction (VR) supported with VR lenses.  
3 Spot metering meters selected focus area.  
4 The camera's exposure metering and flash control systems do not work properly when shifting and/or tilting the lens, or when an aperture other than the maximum aperture is used.  
5 Electronic rangefinder cannot be used during shifting or tilting.  
6 Compatible with AF-I Nikkor lenses and with all AF-S lenses except DX 12-24mm f/4G, ED 17-35mm f/2.8D, DX 17-55mm f/2.8G, DX ED 18-70mm f/3.5-4.5G, ED 24-85mm f/3.5-4.5G, VR ED 24-120mm f/3.5-5.6G, and ED 28-70mm f/2.8D.  
7 Compatible with lenses with maximum effective aperture of f/5.6 or faster.  
8 If AF 80-200mm f/2.8S, AF 35-70mm f/2.8S, new-model AF 28-85mm f/3.5-4.5S, or AF 28-85mm f/3.5-4.5S is zoomed in while focusing at minimum range, image on matte screen in viewfinder may not be in focus when in-focus indicator is displayed. Focus manually using image in viewfinder as guide in such circumstances.

9 With maximum aperture of f/5.6 or faster.  
10 Some lenses cannot be used.  
11 Can be used in mode M, but camera exposure meter cannot be used.  
12 Can be used in mode M at shutter speeds slower than 1/125 s, but camera exposure meter cannot be used.  
13 Attach in vertical orientation (can be used in horizontal orientation once attached).

• Medical Nikkor 200mm f/5.6 requires AS-15 for flash control.



### Nikon Software System Requirements

	Windows	Macintosh
OS	Pre-installed versions of Windows® XP Home Edition, Windows® XP Professional, Windows® 2000 Professional, Windows® Millennium Edition (Me), Windows® 98 Second Edition (SE)	Mac OS X (version 10.1.2 or later)
CPU/Model	Pentium® 300MHz or better	iMac®, iMac® DV, Power Macintosh® G3 (Blue/White), Power Mac® G4 or later, iBook®, PowerBook® G3 or later
RAM	64MB (128MB with RAW images) or more is recommended	
HDD	60MB required for installation, with additional free disk space of 10MB plus an amount equal to double the capacity of the camera memory card available on the system disk when Nikon Software is running	
Display	800 x 600 pixels or more with 16-bit color (High Color/thousands of colors). 24-bit color (True Color/millions of colors) recommended	
Others	CD-ROM drive required for installation. Internet connection required for upload to the Web; e-mail program required for sending pictures by e-mail. Only computers with built-in USB ports supported.	

Note 1: Data transfer may not work properly if the connection to a computer is via a USB hub. Note 2: Installation and usage require user authorization.

### Nikon Capture 4 (ver. 4.1) System Requirements

	Windows	Macintosh
OS	Pre-installed versions of Windows® XP Home Edition & Windows® XP Professional, Windows® 2000 Professional, Windows® Millennium Edition (Me), Windows® 98 Second Edition (SE)	Mac OS 9.0.4, 9.1, 9.2, Mac OS X (version 10.1.5 or later)
CPU/Model	Pentium® 300MHz or better	iMac®, iMac® DV, Power Macintosh® G3 (Blue/White), Power Mac® G4 or later, iBook®, PowerBook® G3 or later
RAM	256MB (512MB or more recommended) Other versions of Windows: 64MB (128MB with RAW images) or more recommended	Mac OS X: 256MB (512MB or more recommended) Mac OS 9: memory allocation of 32MB or more to Nikon Capture 4 Camera Control, 256MB or more to Nikon Capture 4 (ver. 4.1)
HDD	200MB required for installation, with additional free disk space of 10MB plus an amount equal to double the capacity of the camera memory card available on the system disk when Nikon Capture 4 (ver. 4.1) is running	
Display	800 x 600 pixels or more with 16-bit color (High Color/thousands of colors). 24-bit color (True Color/millions of colors) recommended	
Others	CD-ROM drive required for installation. Internet connection required for upload to the Web; e-mail program required for sending pictures by e-mail	

Note 1: Data transfer may not work properly if the connection to a computer is via a USB hub. Note 2: Installation and usage require user authorization.



## Nikon Digital SLR Camera D70 Specifications

Type of Camera	Single-lens reflex digital camera
Effective Pixels	6.1 million
Image Sensor	RGB CCD, 23.7 x 15.6 mm; total pixels: 6.24 million
Image Size (pixels)	3008 x 2000 [L], 2240 x 1448 [M], 1504 x 1000 [S]
Sensitivity	200 to 1600 (ISO equivalent) in steps of 1/3 EV
Storage Media	CompactFlash™ (CF) Card (Type I and II) and Microdrive™
Storage System	Compressed NEF (RAW): 12-bit lossless compression, JPEG: JPEG baseline-compliant
File System	Exif 2.21, Compliant DCF 2.0 and DPOF
Storage (Number of frames per 256 MB)	RAW approx. 23, FINE approx. 73, NORMAL approx. 144
CF card, image size L)	BASIC approx. 279, RAW&BASIC approx. 21
White Balance	Auto (TTL white balance with 1,005 pixels RGB sensor), six manual modes with fine-tuning, preset white balance, white balance bracketing possible
LCD Monitor	1.8-in., 130,000-dot, low-temperature polysilicon TFT LCD with brightness adjustment
Playback Function	1 frame: Thumbnail (4 or 9 segments); Magnifying playback; Slide show; Histogram indication; Highlight point display; Auto image rotation
Delete Function	Card format, All frames delete, Selected frames delete
Video Output	Can be selected from NTSC and PAL
Interface	USB: Mass Storage and PTP selectable
Text Input	Up to 36 characters of alphanumeric text input available with LCD monitor and multi-selector; stored in Exif header
Compatible Lenses	Refer to page 15
Picture Angle	Equivalent in 35 mm [135] format is approx. 1.5 times lens focal length
Viewfinder	Fixed-eyepiece pentaprism-Dach-mirror type; built-in diopter adjustment (-1.6 to +0.5 m <sup>-1</sup> )
Eyepoint	18 mm (-1.0 m <sup>-1</sup> )
Focusing Screen	B-type BriteView clear matte screen II with superimposed focus brackets and On-Demand grid lines
Viewfinder Frame Coverage	Approx. 95%
Viewfinder Magnification	Approx. 0.75x with 50 mm lens at infinity; -1.0 m <sup>-1</sup>
Viewfinder Information	Focus indications, Metering system, AE/FV lock indicator, Shutter speed, Aperture value, Exposure/Exposure compensation indicator, Exposure mode, Flash output level compensation, Exposure compensation, Number of remaining exposures
Autofocus	TTL phase detection by Nikon Multi-CAM900 autofocus module with AF-assist illuminator (approx. 0.5 m to 3.0 m) Detection range: EV -1 to +19 (ISO 100 equivalent, at normal temperature: 20°C)
Lens Servo	1) Autofocus (AF): single-servo AF (AF-S); continuous servo AF (AF-C); predictive focus tracking automatically activated according to subject status 2) Manual focus (M)
Focus Area	Can be selected from 5 focus areas
AF Area Mode	1) Single Area AF, 2) Dynamic Area AF, 3) Closest Subject Priority Dynamic Area AF
Focus Lock	Focus can be locked by pressing shutter-release button halfway (single-servo AF) or by pressing AE-L/AF-L button
Exposure Metering System	TTL full-aperture exposure metering system (1) 3D color matrix metering with 1,005-pixel RGB sensor (2) Center-weighted: Weight of 75% (8 mm dia. circle) given to 6, 8, 10, or 13 mm dia. circle in center of frame, or weighting based on average of entire frame (3) Spot: Meters 2.3 mm dia. circle (about 1% of frame) centered on active focus area
Exposure Metering Range	1) EV 0 to 20 (3D color matrix or center-weighted metering) 2) EV 2 to 20 (spot metering) (ISO 100 equivalent, f/1.4 lens, 20°C)
Exposure Meter Coupling	CPU coupling
Exposure Mode	Digital Vari-Program (  Auto,  Portrait,  Landscape,  Close up,  Sports,  Night landscape,  Night portrait), programmed auto [P] with flexible program; shutter-priority auto [S]; aperture priority auto [A]; manual [M]
Exposure Compensation	±5 EV in increments of 1/3 or 1/2 EV
Auto Exposure Lock	Luminosity locked at detected value with AE-L/AF-L button
Auto Exposure Bracketing	Two or three frames ±2EV in 1/3 or 1/2 steps
Shooting Modes	1) Single frame shooting mode 2) Continuous shooting mode: approx. 3 frames per second 3) Self-timer/remote control mode
Shutter	Combined mechanical and CCD electronic shutter, 30 to 1/8000 s in steps of 1/3 or 1/2 EV, bulb
Sync Contact	X-contact only; flash synchronization at up to 1/500 second

Flash Control	1) TTL: TTL flash control by 1,005 pixel RGB sensor Built-in Speedlight: i-TTL balanced Fill-Flash or standard i-TTL flash (spot metering or mode dial set to [M]) SB-800 or 600: i-TTL balanced Fill-Flash or standard i-TTL flash (spot metering) 2) Auto aperture: Available with SB-800 and 600 with CPU lens 3) Non-TTL Auto: Available with Speedlights such as SB-800, 80DX, 28DX, 28, 27, and 22s 4) Range-priority manual available with SB-800
Flash Sync Mode	1) Front-Curtain Sync (normal sync), 2) Red-Eye Reduction, 3) Red-Eye Reduction with Slow Sync, 4) Slow Sync, 5) Rear-Curtain Sync
Built-in Speedlight	: auto flash with auto pop-up [P], [S], [A], [M]: manual pop-up with button release Guide number (ISO 200/ISO 100, m): approx. 15/11 (manual full 17/12)
Flash Compensation	-3 to +1 EV in increments of 1/3 or 1/2EV
Accessory Shoe	Standard ISO hot-shoe contact with safety lock provided
Self-timer	Electronically controlled timer with 2 to 20 second duration
Depth of Field Preview	When CPU lens is attached, lens aperture can be stopped down and previewed by pressing the preview button
LCD Panel Information	Refer to page 14
Remote Control	ML-L3 wireless remote controller (optional)
Power Source	One rechargeable Nikon EN-EL3 Li-ion Battery; Three CR2 lithium batteries (with supplied MS-D70 CR2 Battery Holder) EH-5 AC Adapter (optional)
Tripod Socket	1/4 in. (ISO1222)
Dimensions (W x H x D)	Approx. 140 x 111 x 78 mm
Weight (without battery)	Approx. 595 g without battery, memory card, body cap, or monitor cover
Supplied Accessories*	Strap, Body Cap, Eyepiece Cap, LCD Monitor Cover, Video Cable, USB Cable, Rechargeable Li-ion Battery EN-EL3, Quick Charger MH-18, Nikon Software CD-ROM, MS-D70 CR2 Battery Holder
Optional Accessories	Rechargeable Li-ion Battery EN-EL3, Multi Charger MH-19, Quick Charger MH-18, AC Adapter EH-5, Speedlight SB-800/600, Nikon Capture 4 (ver.4.1) Software, Semi-Soft Case CF-D70, Remote Controller ML-L3, CompactFlash™ Card

\*Supplied Accessories may differ in each country or area.

The following CompactFlash™ cards can be used with the D70:

- SanDisk Corporation  
SDCFB16/48/80/96/128/160/256/512/1000, SDCFB192/300 (Type II), SDCFB2B256 (Type II), SDCFH128/192/256/384/512/1000, SDCFX512/1000
- Lexar Media Corporation  
4X USB series: CF016/032/048/064, 8X USB series: CF016/032/048/064/080, 10X USB series: CF160, 12X USB series: CF064/128/192/256/512, 16X USB series: CF192/256/320/512/640/1000, 24X USB series: CF256/512, 24X WA USB series: CF256/512, 32X WA USB series: CF1000, 40X WA USB series: CFB256/512/2GB/4GB
- Renesas Technology (Hitachi)  
HB28B016C8C/HB28B032C8C
- Microdrive™  
DSCM-10512 (512MB), DSCM-11000 (1GB), 3K4-2 (2GB), 3K4-4 (4GB)  
Operation is not guaranteed with cards produced by other manufacturers.  
For more details on the above cards, please contact the relevant manufacturer.

### Image Quality, Image Size and Number of Available Shots (when using 256MB CF card)

Image Quality	Image Size	File Size	Number of Available Shots <sup>1)</sup>	Number of Consecutive Shots Available <sup>2)</sup>	Number of Consecutive Shots Available <sup>3)4)</sup>
RAW	—	Approx.5.0MB	Approx. 23 shots	4 shots	4 shots
FINE	L	Approx.2.9MB	Approx. 73 shots	9 shots	14 shots
	M	Approx.1.6MB	Approx. 130 shots	7 shots	10 shots
	S	Approx.0.8MB	Approx. 279 shots	19 shots	279 shots
NORMAL	L	Approx.1.5MB	Approx. 144 shots	12 shots	144 shots
	M	Approx.0.8MB	Approx. 253 shots	7 shots	10 shots
	S	Approx.0.4MB	Approx. 528 shots	27 shots	528 shots
BASIC	L	Approx.0.8MB	Approx. 279 shots	19 shots	279 shots
	M	Approx.0.4MB	Approx. 481 shots	7 shots	9 shots
	S	Approx.0.2MB	Approx. 950 shots	49 shots	950 shots
RAW+BASIC	L	Approx.5.8MB	Approx. 21 shots	4 shots	4 shots

1. May change according to shooting conditions. 2. Number of frames that can be stored in memory buffer. 3. Number of frames when using the SanDisk SDCFH256MB CF card. 4. The number of continuous shots possible in a single burst may be fewer depending on the type of CF card used.

◆Microsoft® and Windows® are either registered trademarks or trademarks of Microsoft Corporation in the United States and/or other countries. ◆Macintosh® is a registered trademark or a trademark of Apple Computer Inc. in the United States and/or other countries. ◆Digital DEE™ is a technology developed by Applied Science Fiction. ◆CompactFlash™ is a trademark of SanDisk Corporation. ◆Products and brand names are trademarks or registered trademarks of their respective companies. ◆Images on LCDs and monitors shown in this brochure are simulated.

Specifications and equipment are subject to change without any notice or obligation on the part of the manufacturer. January 2004 © 2004 NIKON CORPORATION

	<b>WARNING</b>
<b>TO ENSURE CORRECT USAGE, READ MANUALS CAREFULLY BEFORE USING YOUR EQUIPMENT. SOME DOCUMENTATION IS SUPPLIED ON CD-ROM ONLY.</b>	



### NIKON CORPORATION

Fuji Bldg., 2-3, Marunouchi 3-chome, Chiyoda-ku,  
Tokyo 100-8331, Japan  
<http://nikonimaging.com/>

