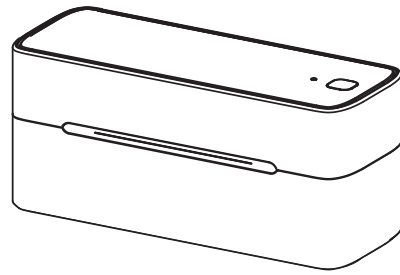


Quick Start Guide

PM-241-BT

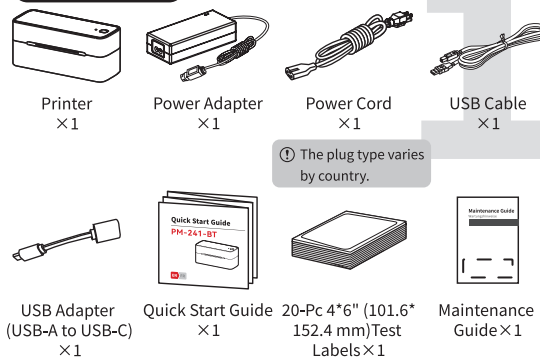


EN

English

1. Product Introduction

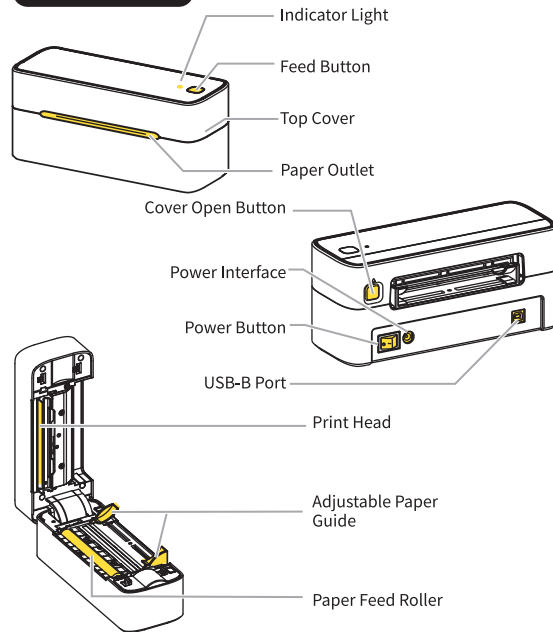
1.1 Packing List



The plug type varies by country.

DHL recommends using 4*8" (100*200 mm) labels

1.2 Printer Parts



2. Preparation Before Use

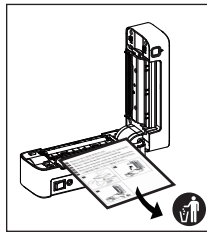
2.1 Removing the Protective Paper of Print Head

01 Press the Cover Open Button and lift the Top Cover until it reaches 90 degrees.



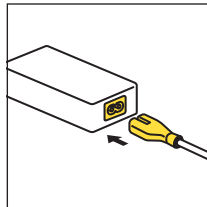
A sheet of protective paper has been pre-installed inside the brand new printer.

02 Remove the protective paper.

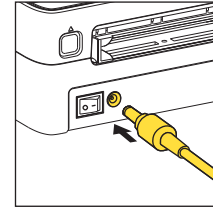


2.2 Connecting to the Power Supply

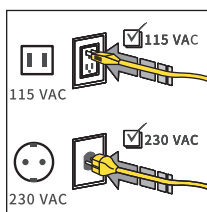
01 Insert the printer's Power Cord into the Power Adapter.



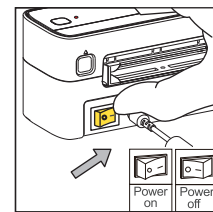
02 Plug the round end of the Power Adapter into the printer's Power Interface.



03 Insert the Power Cord plug into an outlet.



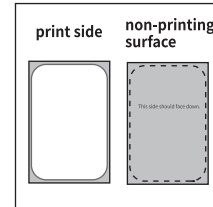
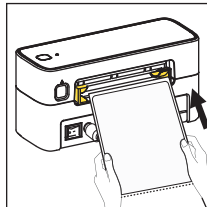
04 Press the Power Button on the back of the printer to turn it on. The Indicator Light on the Top Cover will be on.



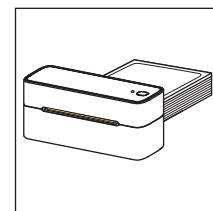
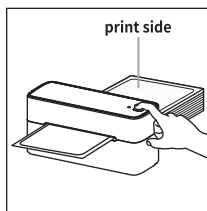
Slow flashing red light: no paper installed
Solid blue light: paper installed

2.3 Installing Label Paper

01 With the print side up, insert the label paper flat into the paper guide slot at the back of the printer until it auto-feeds. Thus, the loading process is completed.



02 Long press the Feed Button until the blue indicator light flashes twice. Upon auto-calibration, the label paper will automatically stop at the Paper Outlet in roughly 5 seconds, indicating that calibration is complete.



3. Getting Started

3.1 Downloading the App

Method 1: Search for the "Labelife" app on App Store® or Google Play™ for download and installation.



Method 2: Scan the QR code to download the app. Simply scan the code with your cell phone's camera, the built-in scanning feature of your browser, or a dedicated scanning app.



As the Safari browser on Apple devices does not support direct QR code scanning, please use your device's built-in QR code scanner instead.

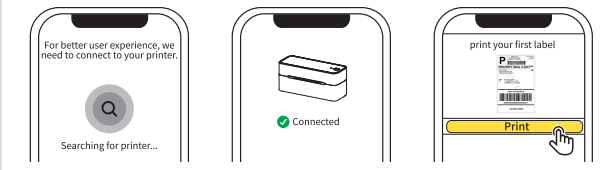
3.2 Printing via Mobile Devices

01 Open the "Labelife" app. 02 Tap [Connect to Printer]. 03 Grant permissions.

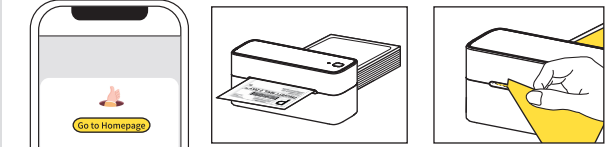


For more information about app permissions, see 3.3 Permission Description in this guide.

04 Wait for the printer to be connected. 05 The printer is successfully connected. 06 Tap [Print] to print your first label.



07 Printing is completed. 08 Tear off the label along the Paper Outlet.



09 Remove the backing. 10 Stick the label onto a dry, flat surface.



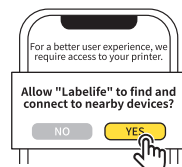
3.3 Permission Description

When the printer is being connected, the app will request necessary permissions.

For Android

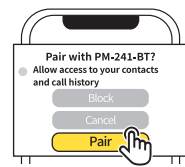
1 The app requires permission to search for nearby Bluetooth devices

For Android 12 and later versions, the app requires permission to scan for nearby Bluetooth devices. For systems below Android 12, the app requires GPS permission to search for nearby Bluetooth devices.



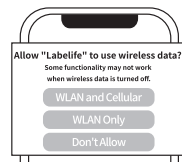
2 Bluetooth Pairing Request

You can tap "Pair" without checking "Allow access to your contacts and call history"

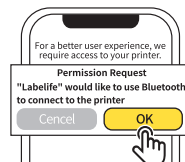


For iOS

1 The app requires access to the Internet



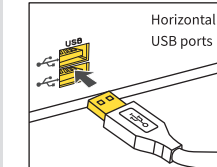
2 The app requires Bluetooth permission



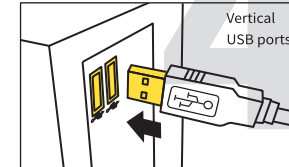
4. Printing via Computer

4.1 Connecting with USB Cable

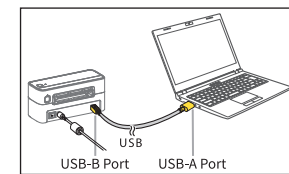
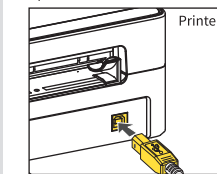
01 Plug the USB-A end (wider end) of the cable into the USB-A port on the computer.



For Mac, a USB adapter is needed.

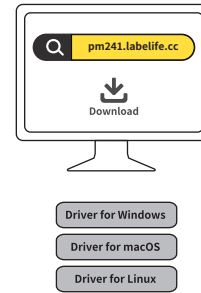


02 Plug the USB-B end (narrower end) of the cable into the USB-B port on the printer.



4.2 Downloading and Installing the Driver

01 Please visit pm241.labelife.cc to download the driver.



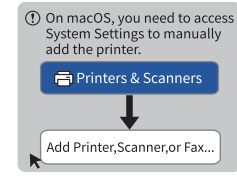
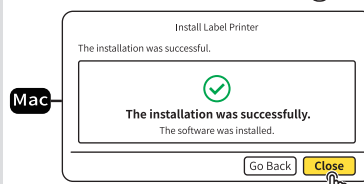
If your operating system is ChromeOS, please refer to 5. More Applications in this guide.
When connected to the Internet and the printer powered on, Windows computers will automatically install the driver once linked to the printer via a USB cable.

Support for Linux is limited. Please contact customer service for more information.

02 Double-click the driver installation package.



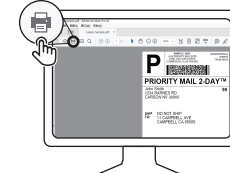
03 Run the driver setup program. Upon the successful installation, the printer can be accessed from Control Panel.



For instructions on connecting the printer to your computer via Bluetooth, please visit pm241.labelife.cc.

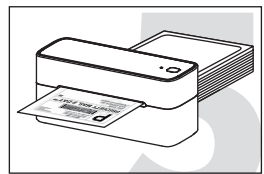
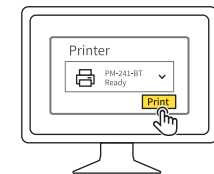
4.3 Printing PDFs

01 Double-click to open the PDF file you wish to print. 02 Click [Print] or

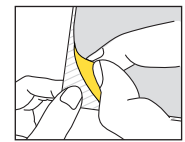
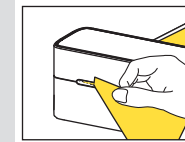


For optimal print quality, please use the recommended software for your operating system.
For macOS, the built-in Preview app is recommended.
For Windows, download and use Adobe.

03 Select the PM-241-BT Printer, and click [Print] to start printing.



04 Tear off the label along the Paper Outlet. 05 Remove the backing. 06 Stick the label onto a dry, flat surface.



5. More Applications

5.1 Chrome Extension

Please install the "Labelife" extension from Chrome Web Store.



Extension	Overview	Systems/Devices	Connection Methods	Available on
Labelife	This Chrome browser extension allows you to use label printers on ChromeOS and macOS devices.	ChromeOS / iMac, MacBook Air, MacBook Pro	USB/Bluetooth	

5.2 Application for Computers

Extension	Overview	Systems/Devices	Connection Methods	Available on
Labelife	This label editing application for computers features PDF import, cropping, and drawing capabilities. With various fonts, styles, frames, images, and barcodes available, it enables you to create custom labels and layouts.	Windows / iMac, MacBook Air, MacBook Pro	USB/Bluetooth	

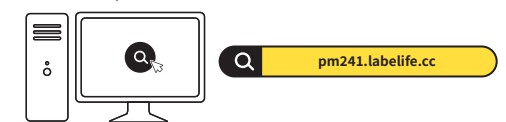
5.3 Application for Mobile Devices

Extension	Overview	Systems/Devices	Connection Methods	Available on
Labelife	This application allows you to import and crop PDFs on mobile devices, use built-in templates to create and edit labels, and print directly from your label printer.	Android / iPhone, iPad	Bluetooth	

6. More Guides and Video Tutorials

You can find more guides, video tutorials, and answers to FAQs through any of the following methods.

Method 1: Visit pm241.labelife.cc.



Method 2: Visit www.youtube.com/@labelife.

