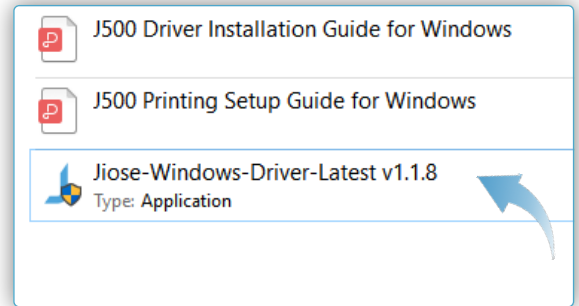


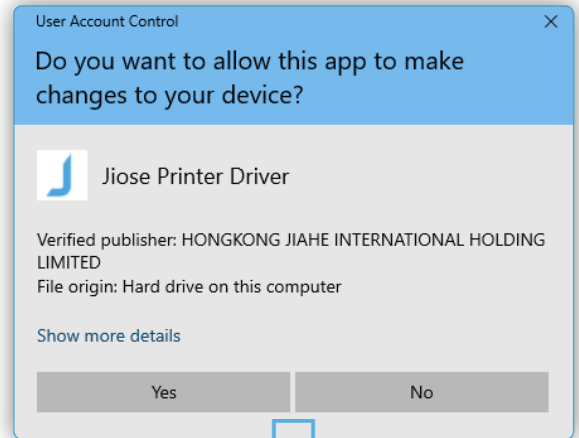
At this folder, you can find the corresponding Windows Drive >>>  
(or visit our website <https://www.jioseprinter.com> to get it)

**Note**

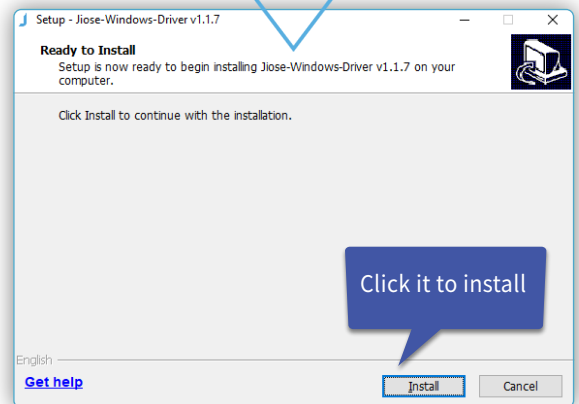
Make sure the label printer is connected to your computer with the USB cable and turn it ON (I=ON) **before installation.**



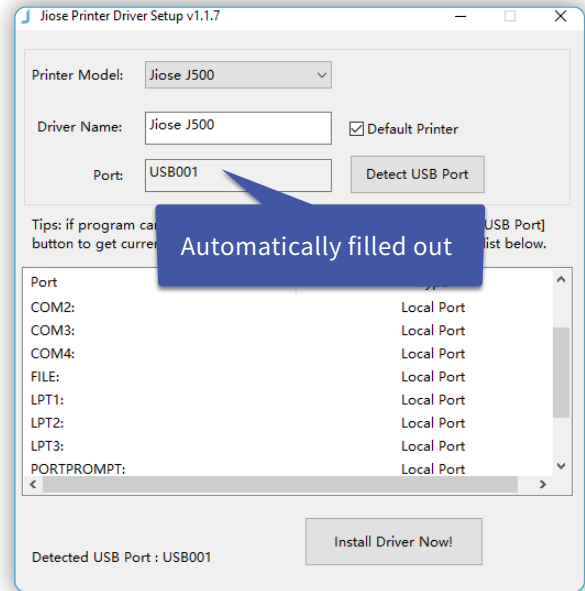
Double click the Windows Driver,  
it will show on the right>>>



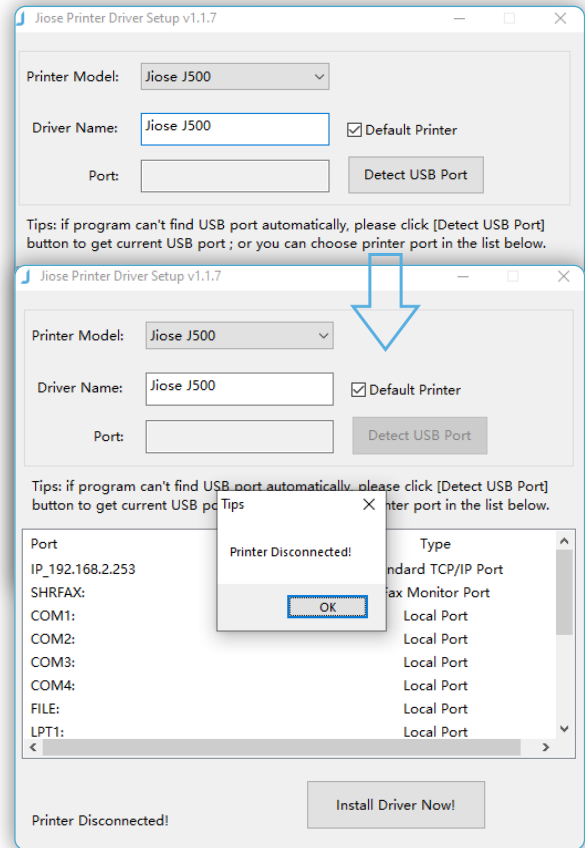
Please click "Yes" to allow the installation >>>



The Port will be filled out by USB001 automatically >>>  
(maybe USB002,USB003,...)



If the printer is not connected, your computer would not identify the port when clicking the "Detect USB Port", as shown on the right >>>



At this time, you need to connect the printer to your computer with the USB cable and turn it ON.

After the printer is connected and the Feed Button lighted, click "Detect USB Port" again >>>

And, it will show "Detected USB Port" normally >>>

Then, the page will display "Add Printer Successfully!" >>>

OK, the driver installation is finished, please close the window and turn to *J500 Printing Setup Guide* to learn how to set the parameters to your most used.

