

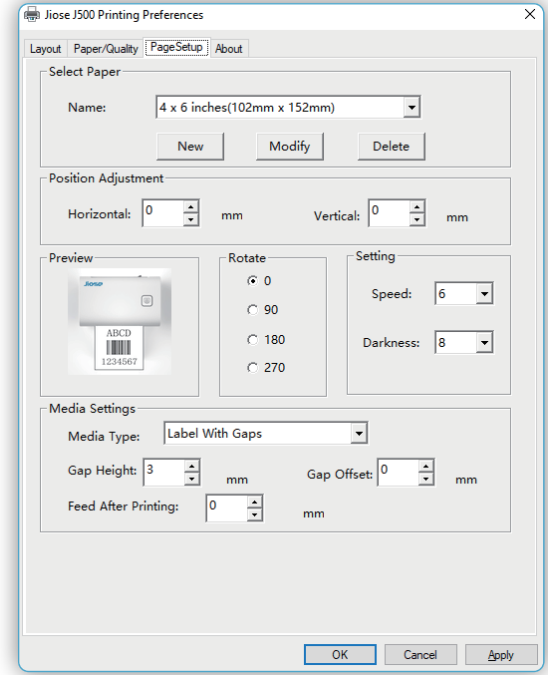
## I . Why I need to set up the printing parameters?

In general, our printer parameters are all set by default once you install the drive, as shown on the right >>>

Size: 4 x 6 inches(102mm x 152mm)

Speed: 6 (6 inch/s)

Darkness: 8 (middling darkness)



But if there is no paper size to match your label size, you'll need to create a new size before printing. Or you're used to printing other size label (such as 4 x 6.25 inches, ...), so you could change it to your default size.

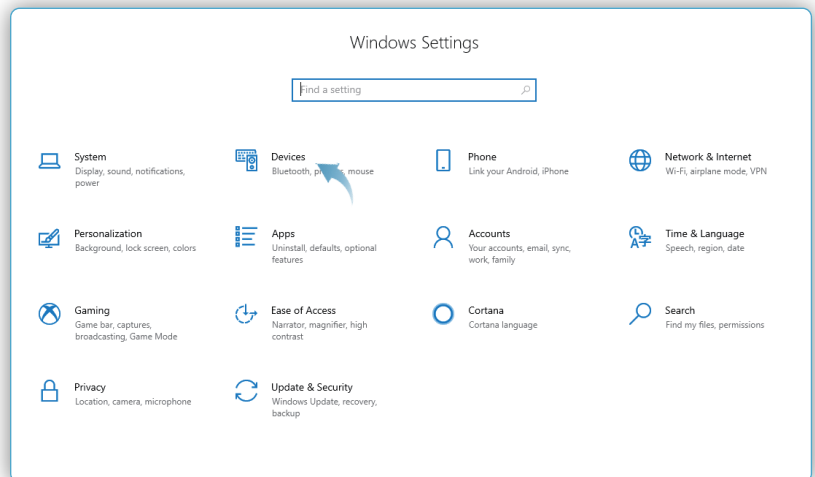
## II . How to set up the printing parameters?

### 1. Printing Test Page

Please follow the steps to print a test page to make sure the driver has been installed properly >>>

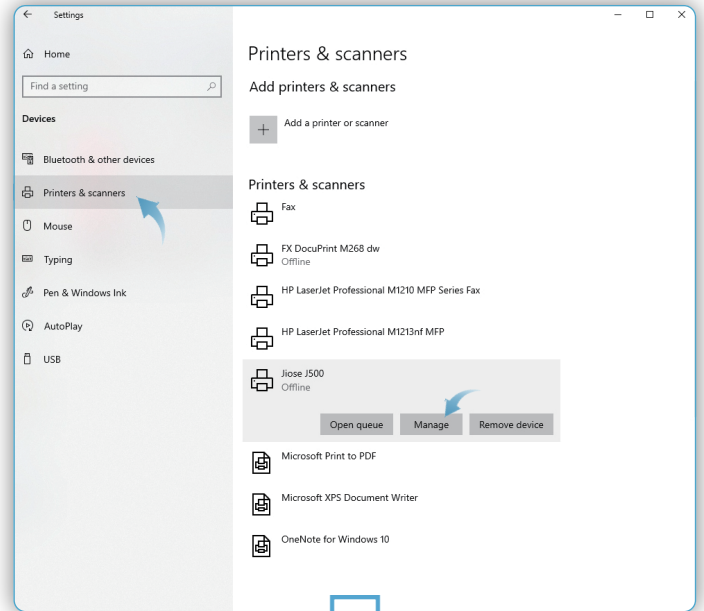
Go to your computer start menu and turn to "Settings" option >>>

Select "Devices" >>>



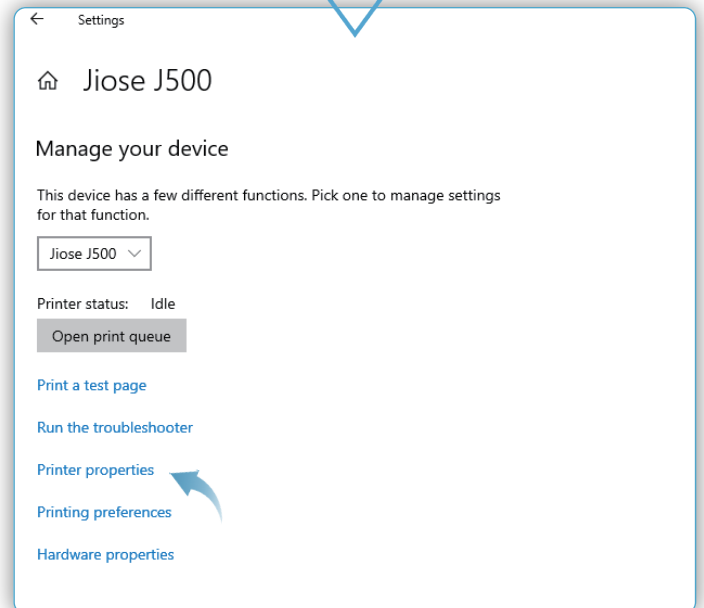
Select "Printers and scanners", then the "Jiose J500" is listed on the right >>>

Click "Jiose J500" and select "Manage" >>>



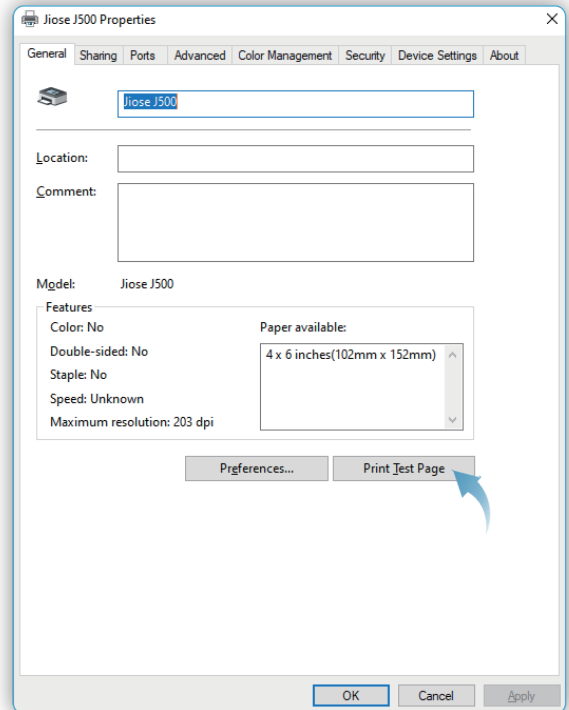
It will show on the right >>>

Select "Printer properties" >>>



Then, it will show on the right >>>

Please click "Print Test Page" using the the 4x6 labels that included in the package >>>

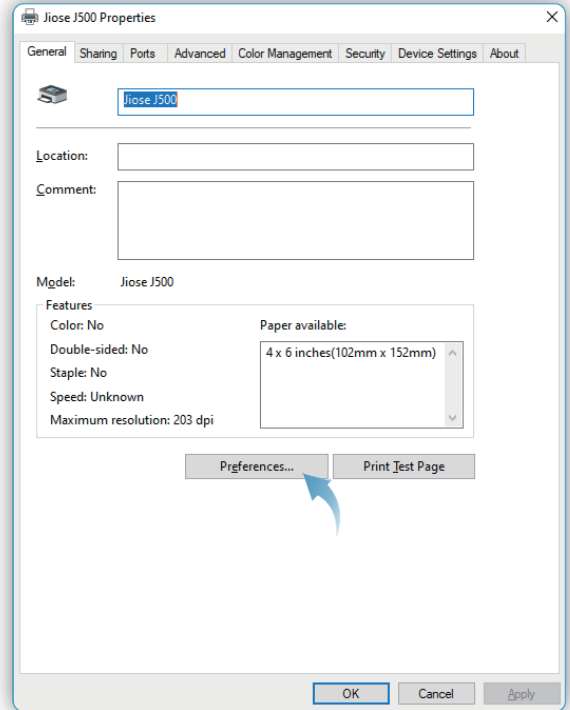


If the test page is printed normally >>>  
It means the printer and the driver was installed correctly.

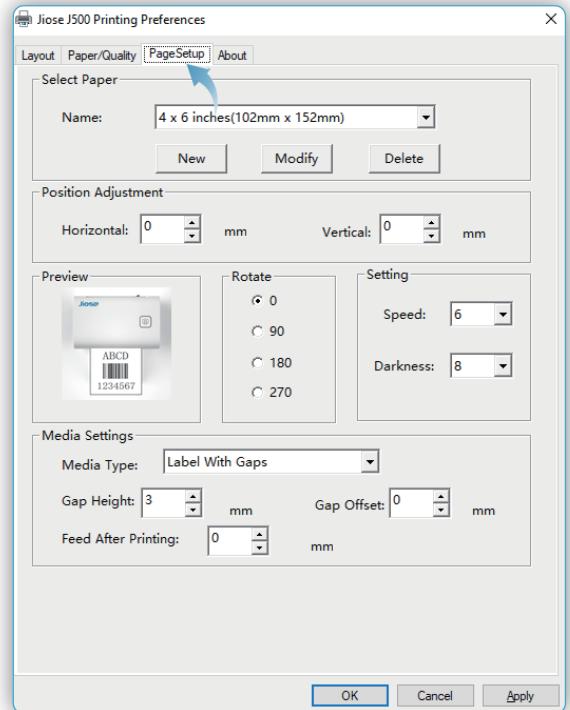


## 2. Setup Printer Properties

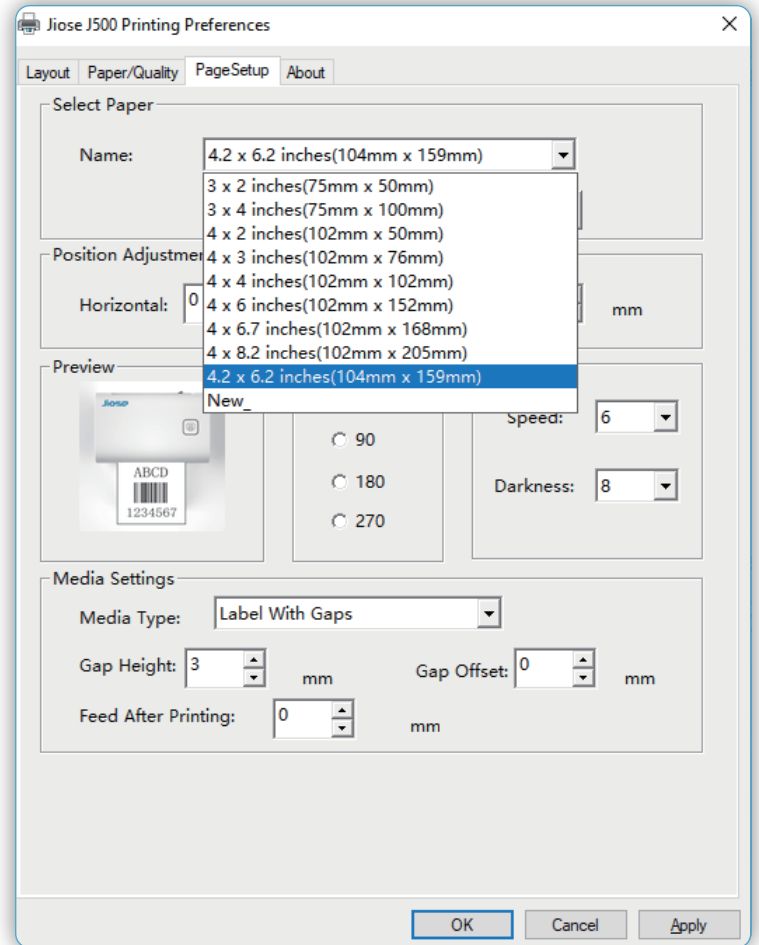
Click "Preferences..." still on the above "General" page >>>



And please click the "PageSetup" on the Preferences page >>>



On this page, you can select the size of the paper as your default printing size under the "Name" drop-down box >>>  
(the original default is 4 x 6 inches)

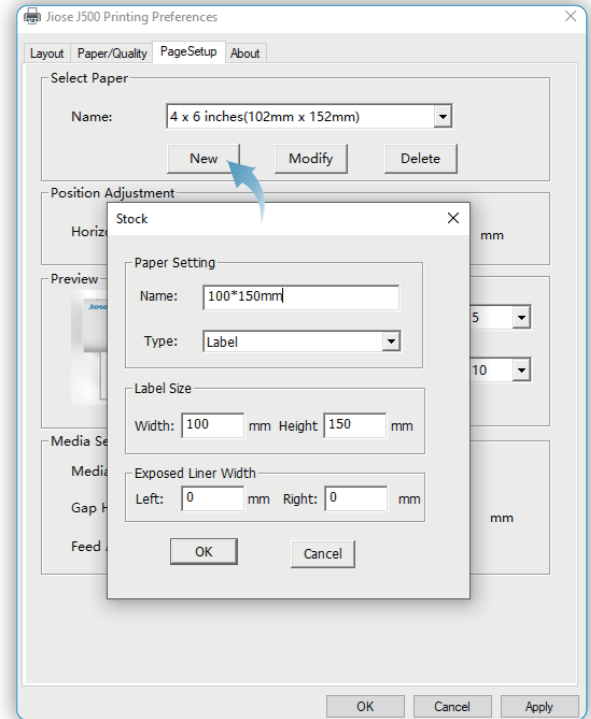


If no suitable paper size to match your label size, you need to create a corresponding paper size before printing the label.

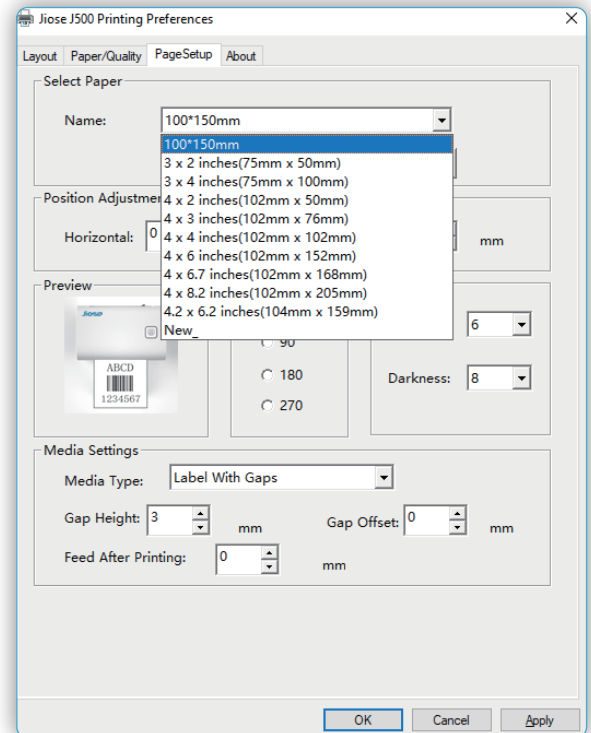
So how to do it ?

Firstly, please click "New" to edit it >>>

Then, click "OK" to save it after entering the specific data you wanted in the "Width" and "Height" boxes and typing a recognizable "Name" >>>



OK, the 100mm\*150mm paper size was added to the Setup >>>



**Note**

The Printing Width (Label Size Width):  
Min. 40mm ~ Max. 108mm (1.57~ 4.25 inches);

The Printing Length (Label Size Height):  
Min. 30mm ~ Max. 300mm (1.18"~ 11.8 inches).

**NOTICE:** It's necessary to select the corresponding paper size before clicking "Print" **every time** you start print, **unless** the pdflabel you wanted to print is match with your default paper size.

So, if there is no suitable size selection, you'll need to create a corresponding paper size on the PageSetup (and you also need to run the **Intelligent Label Study** on the machine) before printing.

► **Note**

Every time you change the label size, please run the **Intelligent Label Study** on machine before printing.

And how to run the **Intelligent Label Study** on machine ?

Please turn to the page 6th, 7th of the *Jiose J500 USER GUIDE* to learn how to run it.

OK, the machine is ready to print since you have selected the corresponding paper size and also have run the Intelligent Label Study.

Just click the "Print" on your printing file to start J500 printing journey!

By the way, you could also set the printing **Speed** and **Darkness** to your preference.

**Notice:** Increasing the number of Speed will influence the printing effect, and increasing the number of Darkness will get darker print. But the high Darkness may lead to unwanted dark lines or make the label getting too hot and sticking to the printer head.

If for any reasons the printer did not work as expected, please kindly contact Jiose priority customer service to promptly receive further assistance. We will respond to your email or messages within 24 hours.

✉ Jiose Email: [support@jioseprinter.com](mailto:support@jioseprinter.com)

☎ Jiose Skype: +852 6234 7761

☎ Jiose Tel: +1 (281) 236-7202 (9am-6pm PST)  
+1 (281) 236-8167 (8pm-3am PST)  
+852 9087 4816

For how-to videos, parts, and FAQ pro, please visit :  
[www.jioseprinter.com](http://www.jioseprinter.com)