

WASHING MACHINE EP24896AR USER'S MANUAL

# ARLIME

A-Brighten Your Home Life



THIS INSTRUCTION BOOKLET CONTAINS IMPORTANT SAFETY INFORMATION.  
PLEASE READ AND KEEP FOR FUTURE REFERENCE.



FOLLOW ARLIME



# ARLIME

A-Brighten Your Home Life

## Contents

Name of all components

Note ..... 2

Using advice ..... 4

Name of all components ..... 5

Accessories ..... 5

Installation instructions

Laying the machine ..... 6

Connection of the inlet/drain hose ..... 7

Connection of the power cord ..... 8

Operating instructions

Control panel ..... 9

Operation ..... 10

Safety warning ..... 10

Maintenance

Maintenance ..... 12

Trouble shooting ..... 13

Program Time Table

Program Time Table ..... 15

# ARLIME

A-Brighten Your Home Life

## NOTE

1. This product belongs to Class I appliances. Please pay attention to electricity safety when using: This machine uses a single-phase two-pole grounded power outlet, the outlet must be reliably grounded, and grounding terminal should not be connected with gas pipelines, water pipes, and other utilities.

- the appliance is not to be used by persons (including children) with reduced physical, sensory or mental capabilities, or lack of experience and knowledge, unless they have been given supervision or instruction.
- children being supervised not to play with the appliance.
- carpet does not obstruct the openings for washing machines with ventilation openings in the base.
- Cord replacement must be handled by supplier.
- The new hose-sets supplied with the appliance are to be used and that old hose-sets should not be reused.

2. If the washing machine is connected to the power supply via a socket board or a portable power unit, the socket board or portable power unit must be placed in a place that is not wet and cannot be easily splashed by water.



# ARLIME

A-Brighten Your Home Life

3. Do not use a socket with other electrical appliances, do not use when plug and socket are loose. Maximum mass of dry cloth is 6kg.
4. If there is any dust on mounting surface of power plug and insert, carefully wipe it with a dry cloth.
5. When the washing machine is in normal use, the power cord plug should be easily accessible by hand. When power is cut off, moved, unused or cleaned, be sure to unplug power plug and turn off the water tap. Note: Please do not plug or unplug power cord with wet hands.
6. Do not excessively bend, stretch, twist, strap, or overload the power cord. This appliance is intended to be used in household and similar applications such as:
  - staff kitchen areas in shops, offices and other working environments;
  - farmhouses;
  - by clients in hotels, motels and other residential type environments;
  - bed and breakfast type environments;
  - areas for communal use in blocks of flats or in launderettes. If the manufacturer wants to limit the use of the appliance to less than the above, this shall be clearly stated in the instructions.

# ARLIME

A-Brighten Your Home Life

7. The connection mode of this unit's power cord is Y connection. If power cord or power plug is damaged, it must be replaced by our special service point or full-time personnel of our after-sales service department to avoid danger.
8. Washing machine cannot be installed in the bathroom and other wet places, absolutely cannot use water to wash, do not put wet clothes on the control board of the washing machine.
9. Please avoid direct sunlight to washing machine; do not be near heat sources such as heating.
10. Do not place the machine on a carpet. Do not place machine with a drain function on a place where there is no floor drain.
11. This product needs to be connected to water. New water pipes must be used as much as possible. Old water pipes cannot be reused.
12. The machine applies water pressure 0.03MPa ~ 0.85MPa.
13. Make sure that the faucet and inlet pipe fittings are reliably installed and that inlet pipe and fittings are securely plugged into place.
14. Do not put any hot, heavy items (such as pots with hot water, etc.) on the washing machine.

# ARLIME

A-Brighten Your Home Life

15. Unattended children or physically handicapped persons must not use this machine.
16. Never put kerosene, gasoline, banana water, alcohol or other flammable substances or laundry with such substances in or near laundry tub.
17. Do not wash waterproof clothing or easy-to-float clothing such as raincoats, bicycle covers, down products, elastic cotton products, etc. to avoid abnormal vibration or damage to clothing during washing or spinning.
18. Do not open the door cover when the washing machine is spinning.
19. When the washing machine is working, do not put your hand into the bucket of the running washing machine, even if the speed is very slow, it is dangerous. Be especially careful not to let children climb the washing machine to avoid danger.
20. Never disassemble, repair, or modify this unit by yourself.

## Using advice

1. Low-bubble detergent is recommended during the use of this machine.



# ARLIME

A-Brighten Your Home Life

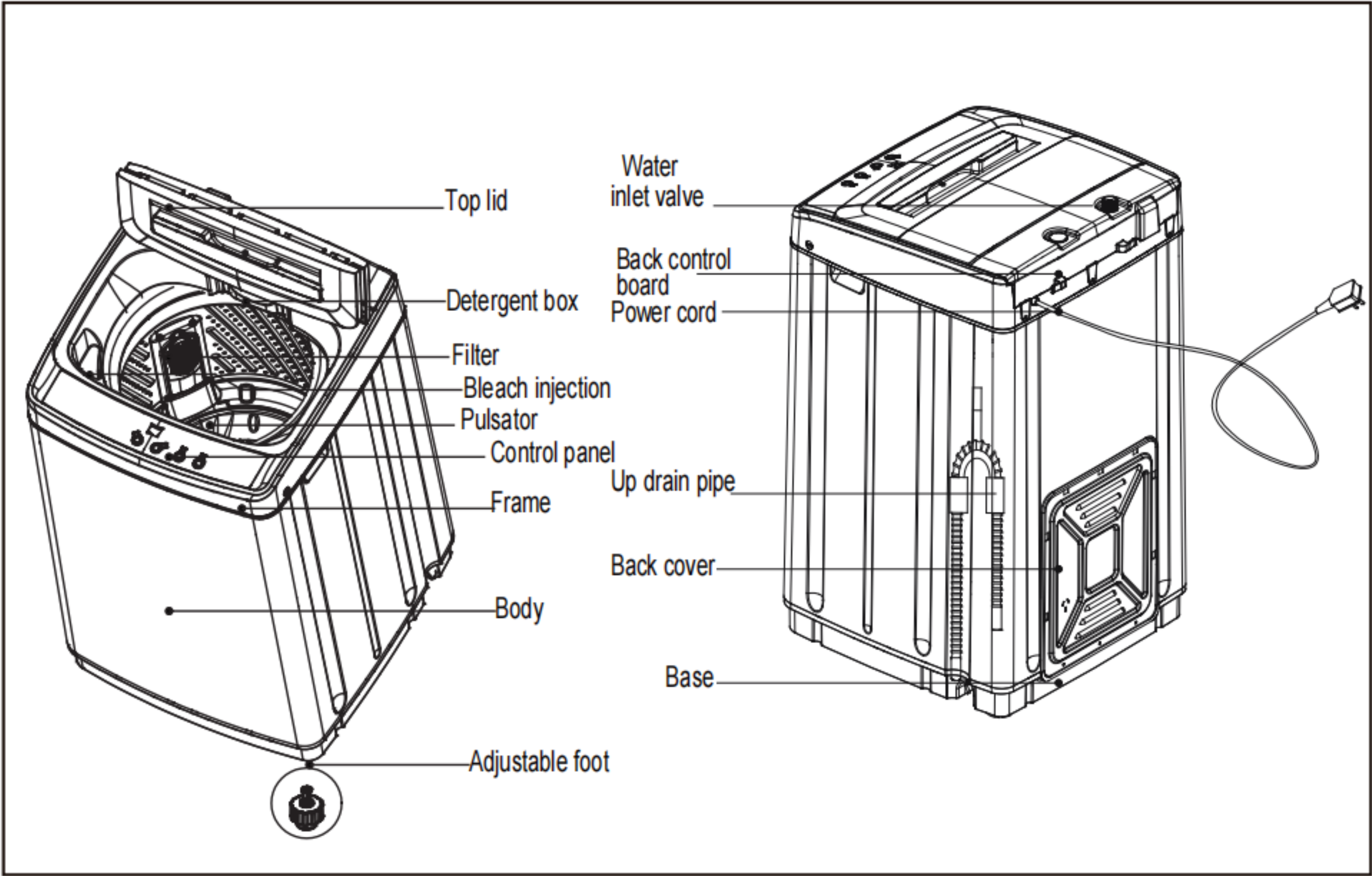
2. It is recommended to use the unit in an environment of 0°C to 40°C. Too low or high ambient temperature may cause the unit to malfunction.
3. If the washing machine is stored in an environment below 0°C, it must be left in the room temperature environment for about 4 hours before it can be used to prevent the machine from icing and damaging the machine.
4. The washing and dewatering capacity of the washing machine refers to the maximum weight of the standard laundry in one washable, dehydrated and dry state, which is different from the actual laundry. The thickness, size and type of the laundry fabric will affect the actual washing capacity. It is advisable to wash the laundry in the washing process.
5. The amount of washing below 1.0kg should not be chosen high-grade water level, so as not to splash during the washing process.



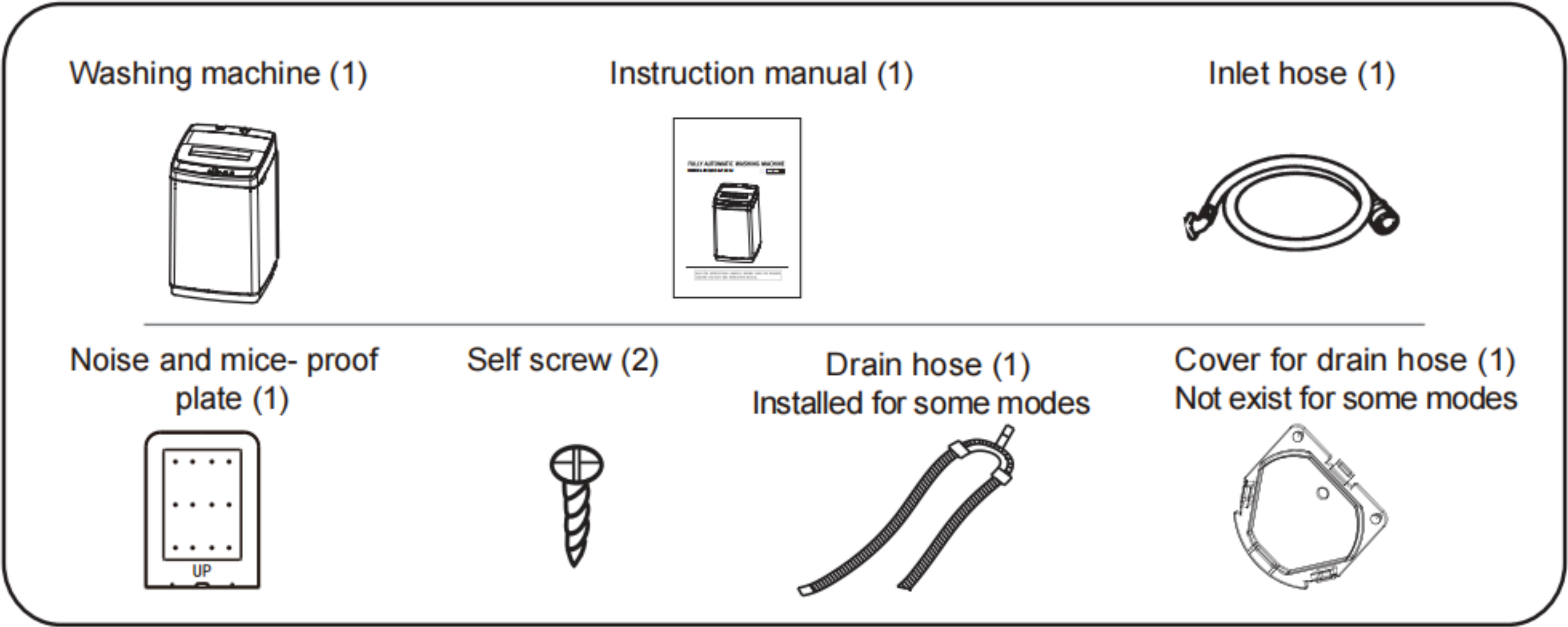
# ARLIME

A-Brighten Your Home Life

## Name of all components



## Accessories





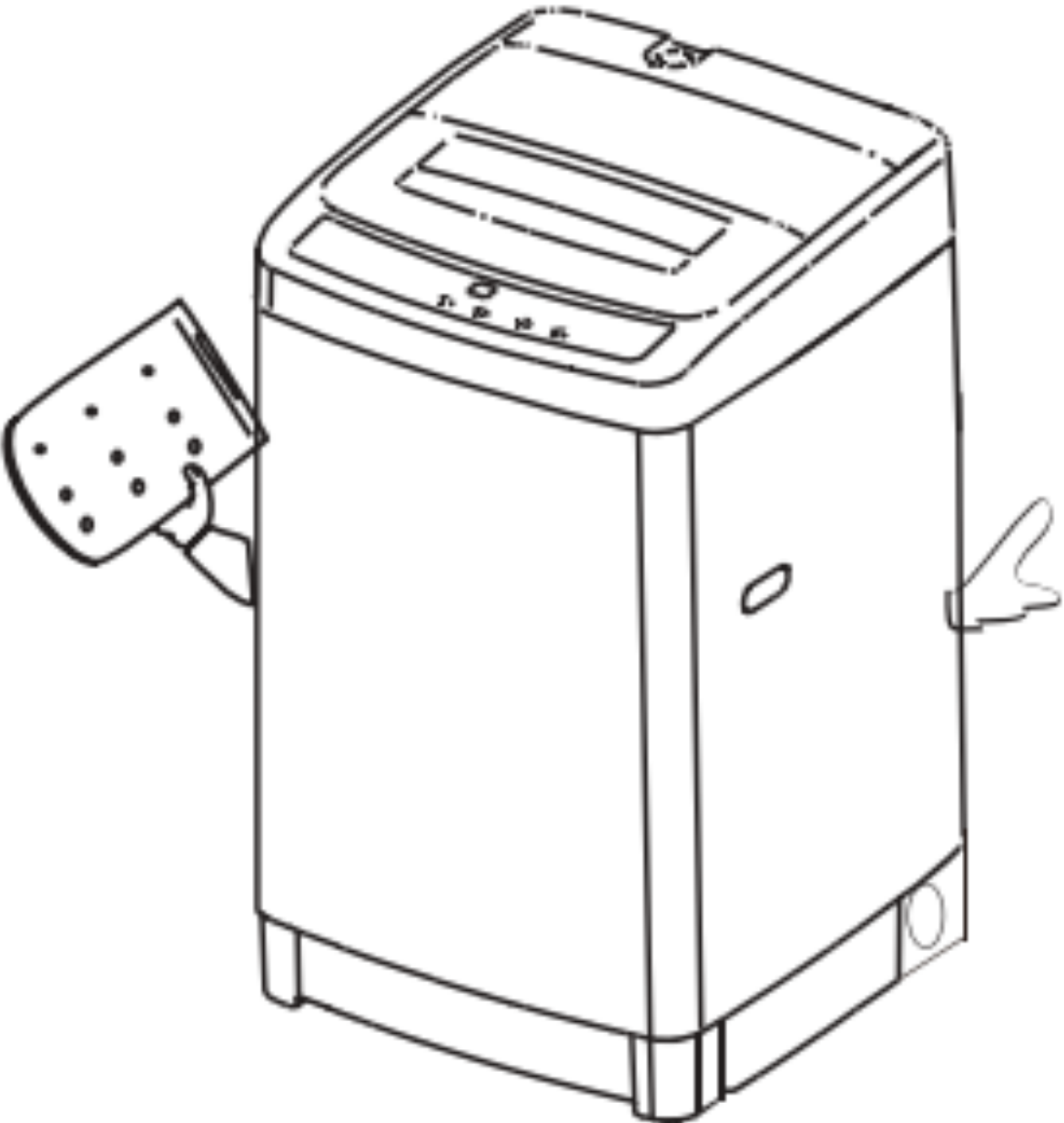
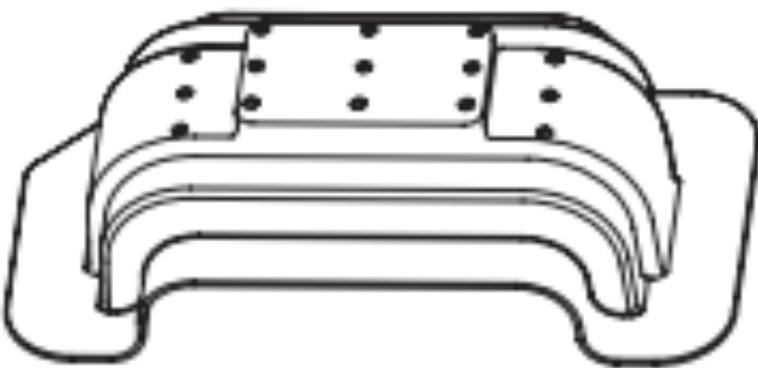
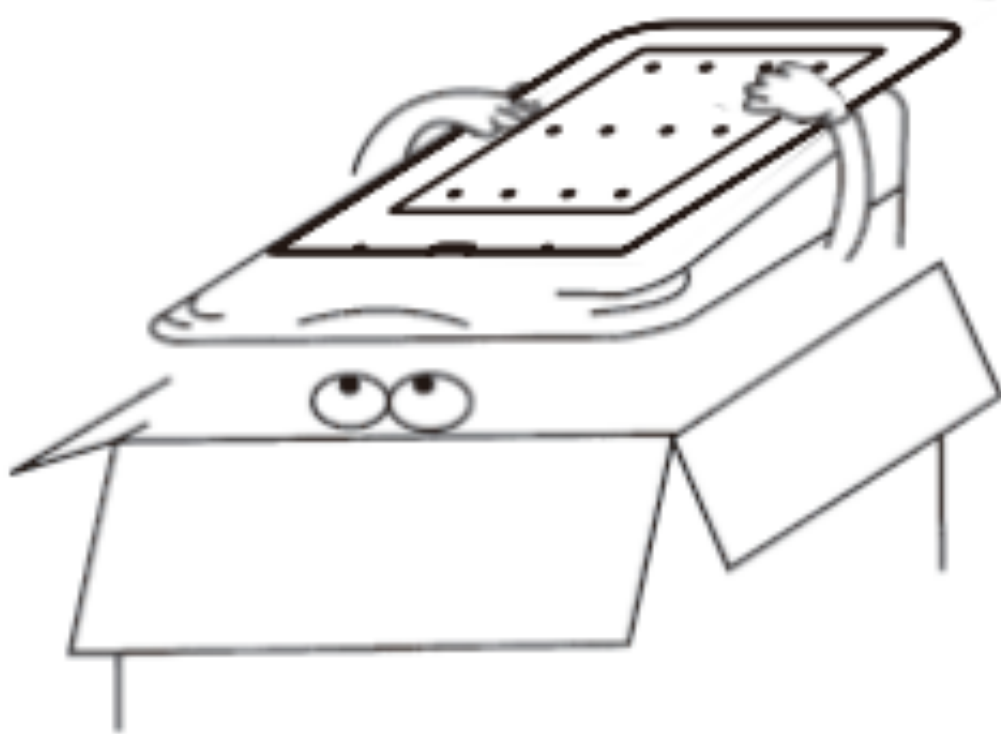
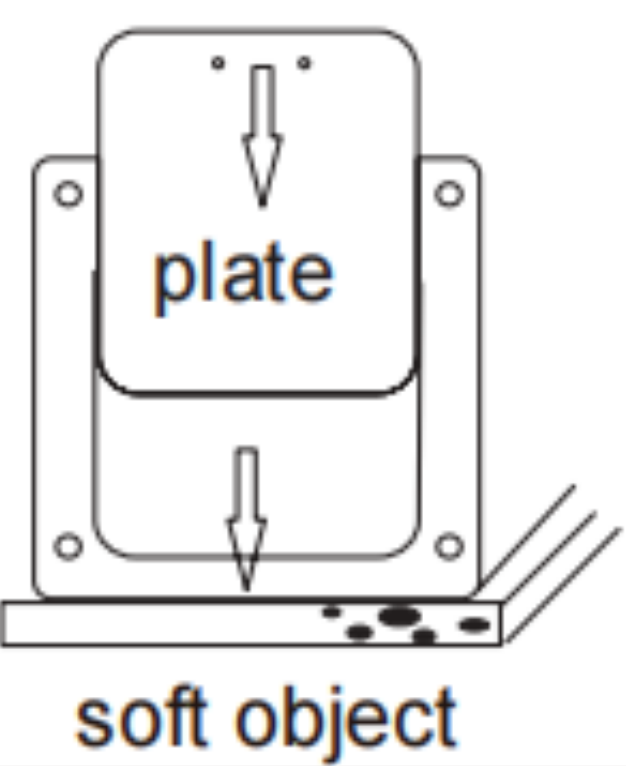
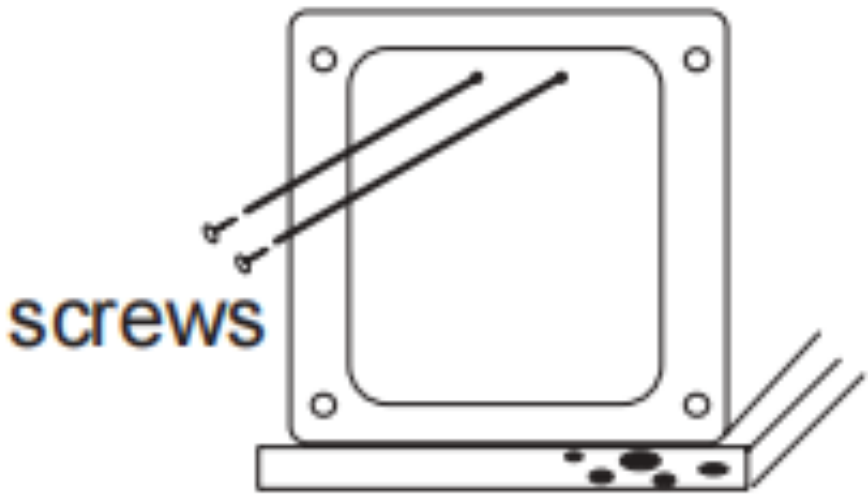
# ARLIME

A-Brighten Your Home Life

## Installation instructions

### Laying the machine

Insert the mice-proof plate into the washing machine base

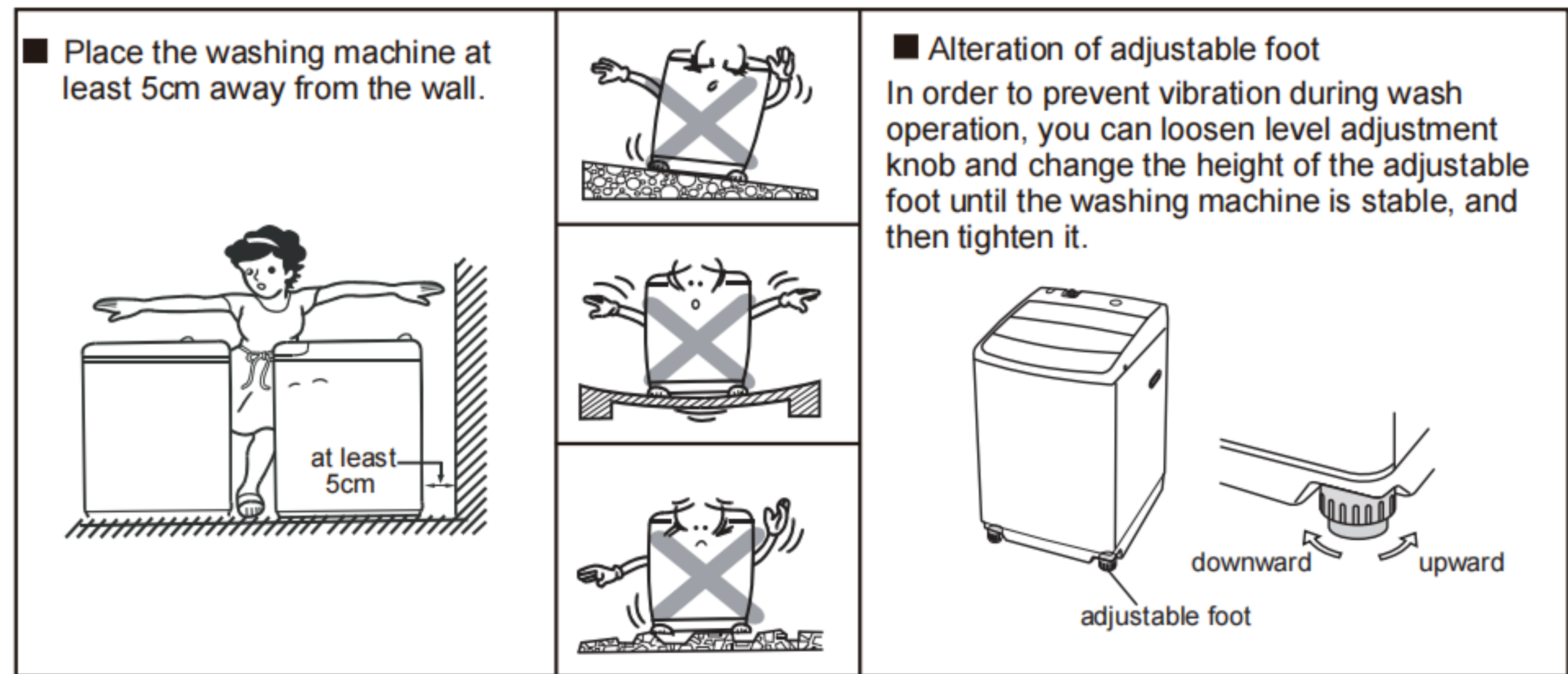
	<p>1. Remove the plastic accessory as below picture from the bottom of washing machine before use.</p> 	<p>2. Take out the mice-proof plate at the top of the machine.</p> 
	<p>3. Lay down the washing machine gently on the soft object. And insert the noise-proof plate into the base.</p> 	<p>4. Fasten up the noise-proof plate with two screws.</p> 



# ARLIME

A-Brighten Your Home Life

Place the washing machine on a firm and level surface, use the level adjustable knob to adjust the washing machine to be stable.



Place the washing machine on a firm and level surface, use the level adjustable knob to adjust the washing machine to be stable.

Connection of the inlet/drain hose

Connection of the inlet hose

1. Select the appropriate type of outlet as shown in the figure.





# ARLIME

A-Brighten Your Home Life

2. Before installation, run water through both faucet and inlet hose, to get rid of particles in the water line that might clog the inlet valve screen.

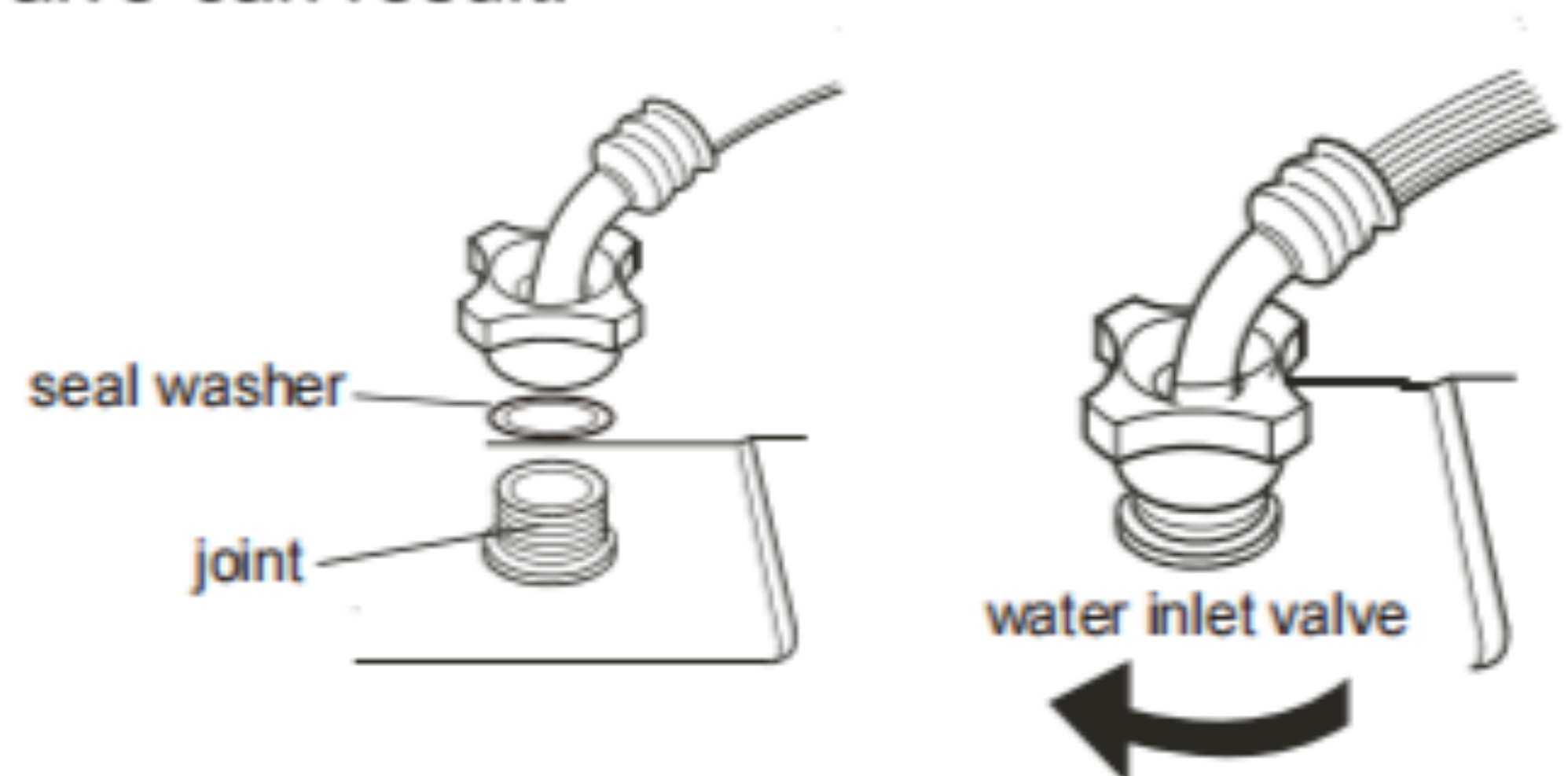
3. Make sure a seal washer seating at the joint of inlet hose, then connect the inlet hose to the faucet.

**NOTE:** Do not overtighten. Damage to the valve can result.



4. Make sure a seal washer seating at the joint of inlet hose, then connect the inlet hose to the water inlet valve.

**NOTE:** Do not overtighten. Damage to the valve can result.



5. Check for leak

- (1). Swing the water inlet hose gently to confirm if it's suitable.
- (2). Turn on the water faucet and check for leak. A small amount of water might enter the machine. You will drain this later.

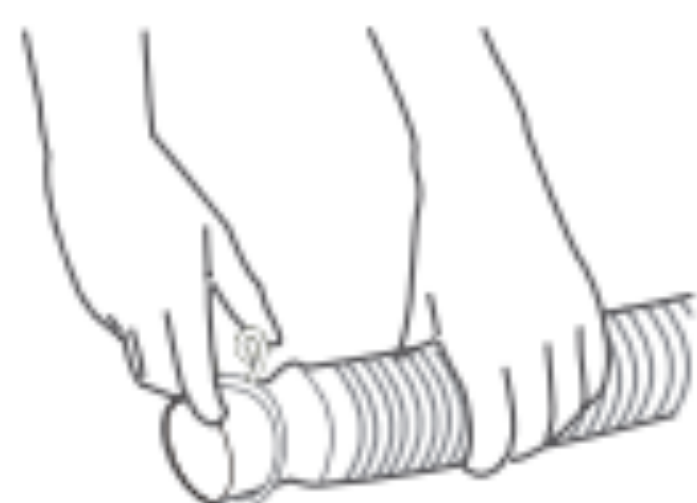


# ARLIME

A-Brighten Your Home Life

## Connection of the drain hose (some modes have been connected)

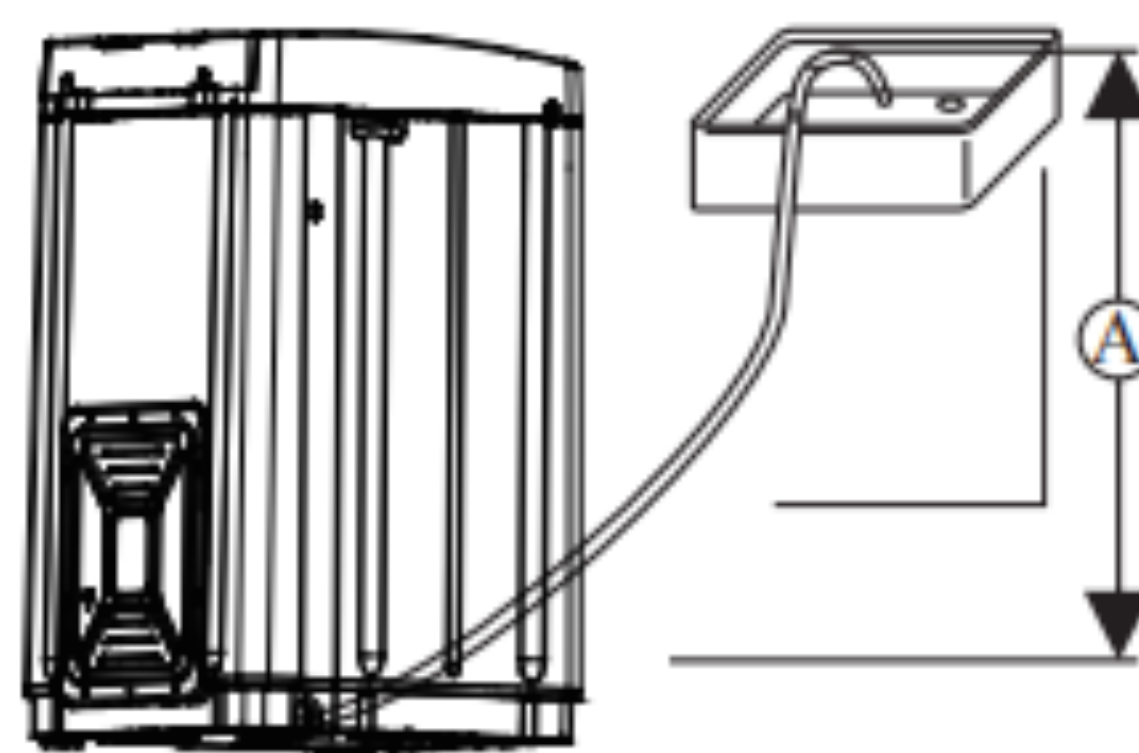
1. Press down the fix ring, and hitch it over the drain hose.



2. Press down the fix ring, and then push it to the drain outlet. Clasp the fix ring to make sure they are connected well.



3. Top of tub must be no higher than 90cm from bottom of waster(A)

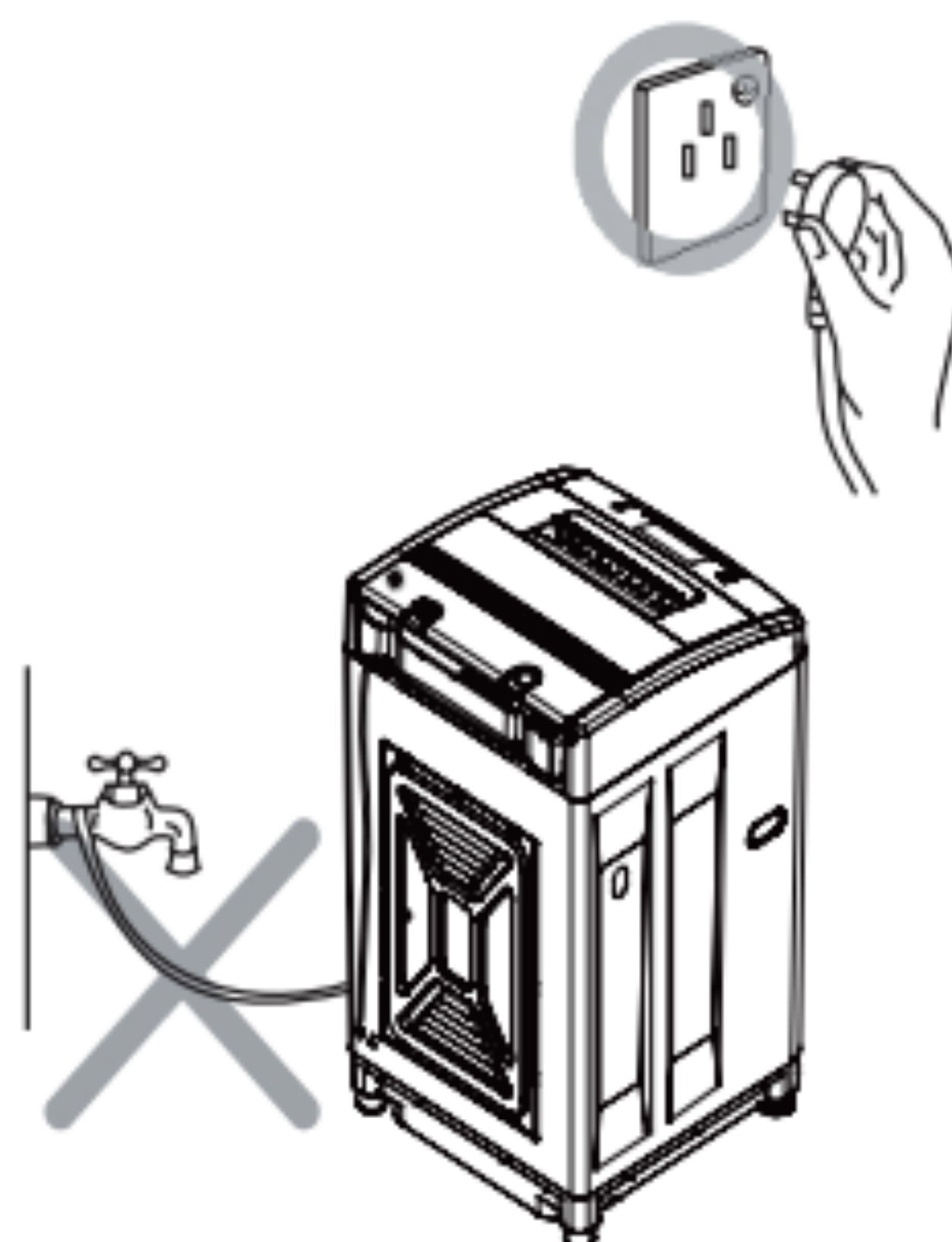


## Connection of the power cord

- The earthing which is indicated by yellow and green colour must be firmly connected to a special Earthing. Please call the technician to assemble.
- The socket should have assembled the 3A fuse.

### NOTE:

- Never try to connect the earthing of the washing machine together with that of gas pipe or water pipe, telephone cord or lightening rod.
- Do not use the damaged cord because it could cause electricity leakage and fire.
- In case cord is damaged, please contact the local service company, because it is removed and replaced with special tools.





# ARLIME

A-Brighten Your Home Life

## Control panel

### Program

01. Fuzzy  
Set the water level automatically according to the load of laundry.

02. Heavy  
To wash the coverlet, jeans and other big clothes.

03. Gentle  
For washing of wool or underwear.

04. Speedy  
To wash the little stain clothes.
05. Soak&Wash  
Soak for certain time before washing.

06. Single Wash  
Only for washing.

07. Single Spin  
Only for spinning.

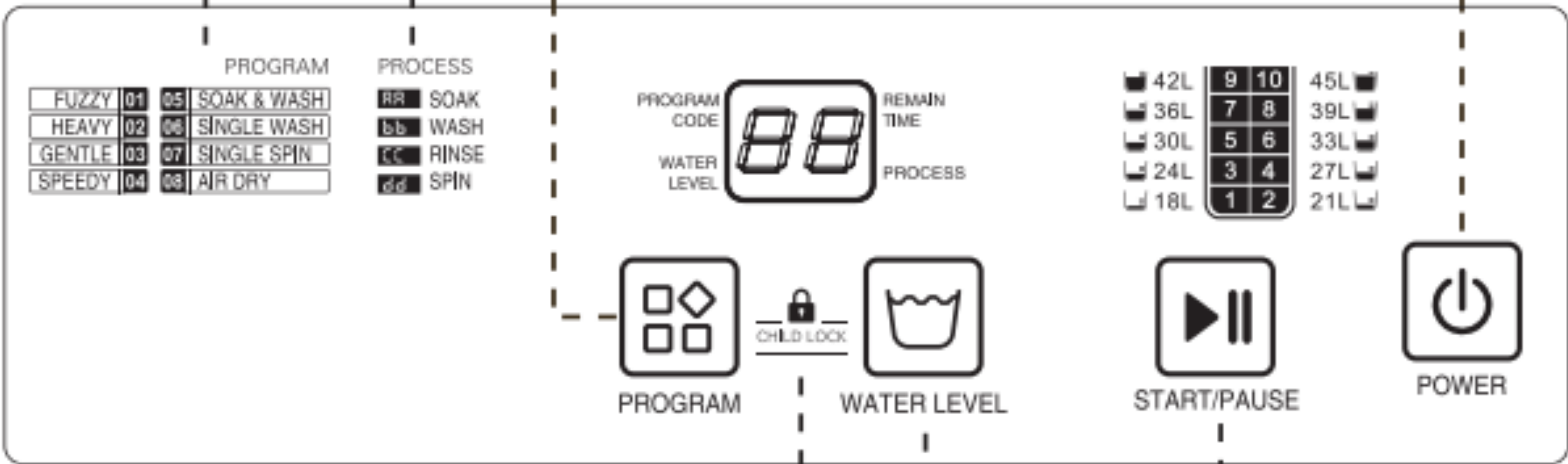
08. Air Dry  
To dry the tub.

### Power On/Off

Use this button to turn the washing machine on and off.

Program Code

Process Code



### Child lock

Press and hold the two buttons (Water level & Program) simultaneously for 1.5 second to activate and deactivate the safety lock.

### Water level

Press this button to choose right water level according to the load of clothing, so as to avoid wasting water. At Normal mode, the machine can set the right water level automatically.

### Start/Pause

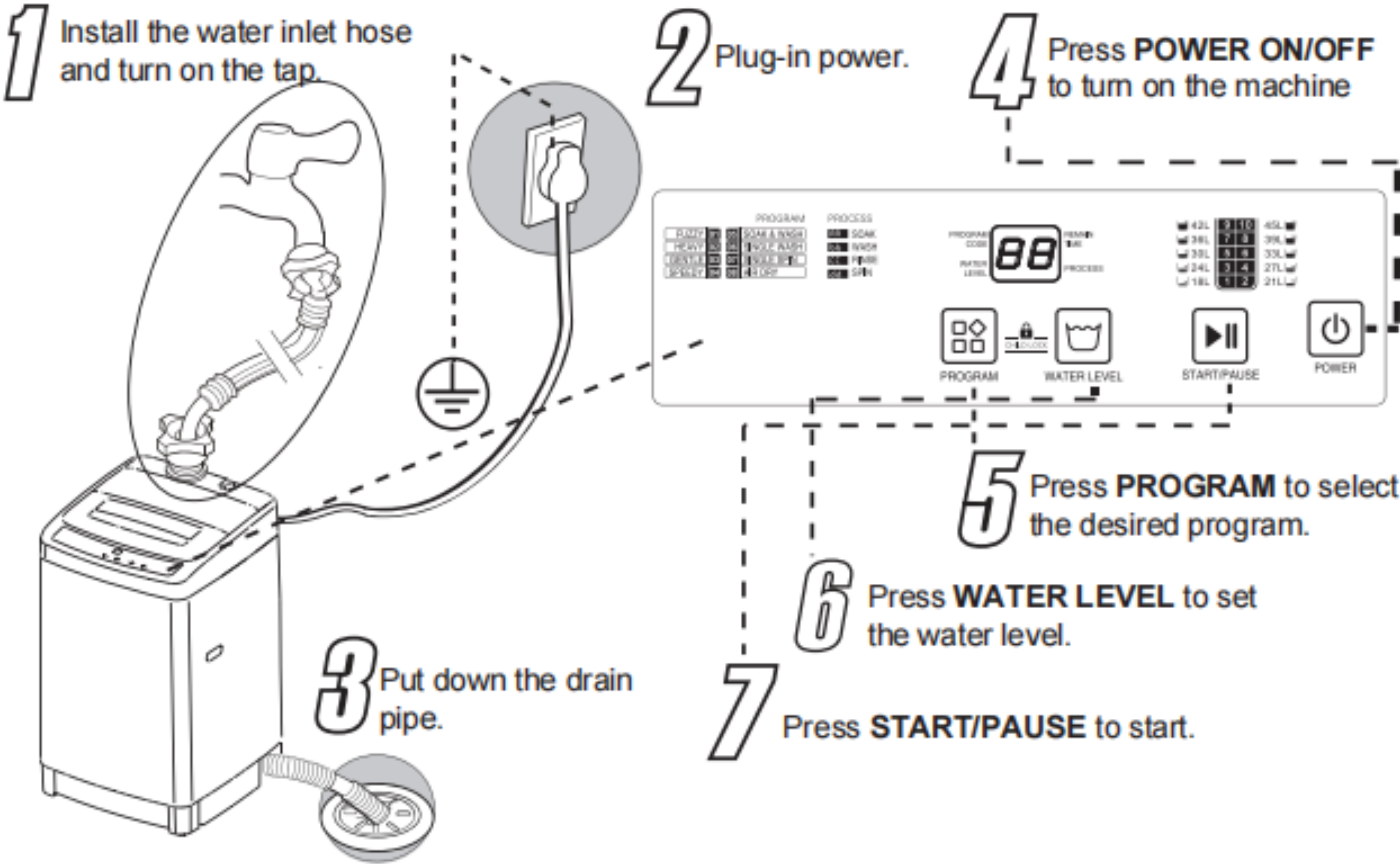
Press this button to begin a wash program, or to pause / resume a program that is currently in progress



# ARLIME

A-Brighten Your Home Life

## Operation



*When the preset operation finishes, the machine will power off automatically.*



# ARLIME

A-Brighten Your Home Life

## Safety warning



**Warn**



**Forbid**

Make sure the voltage in your living area corresponding to the one shown on the rating label of the appliance. And the wall socket is properly grounded.



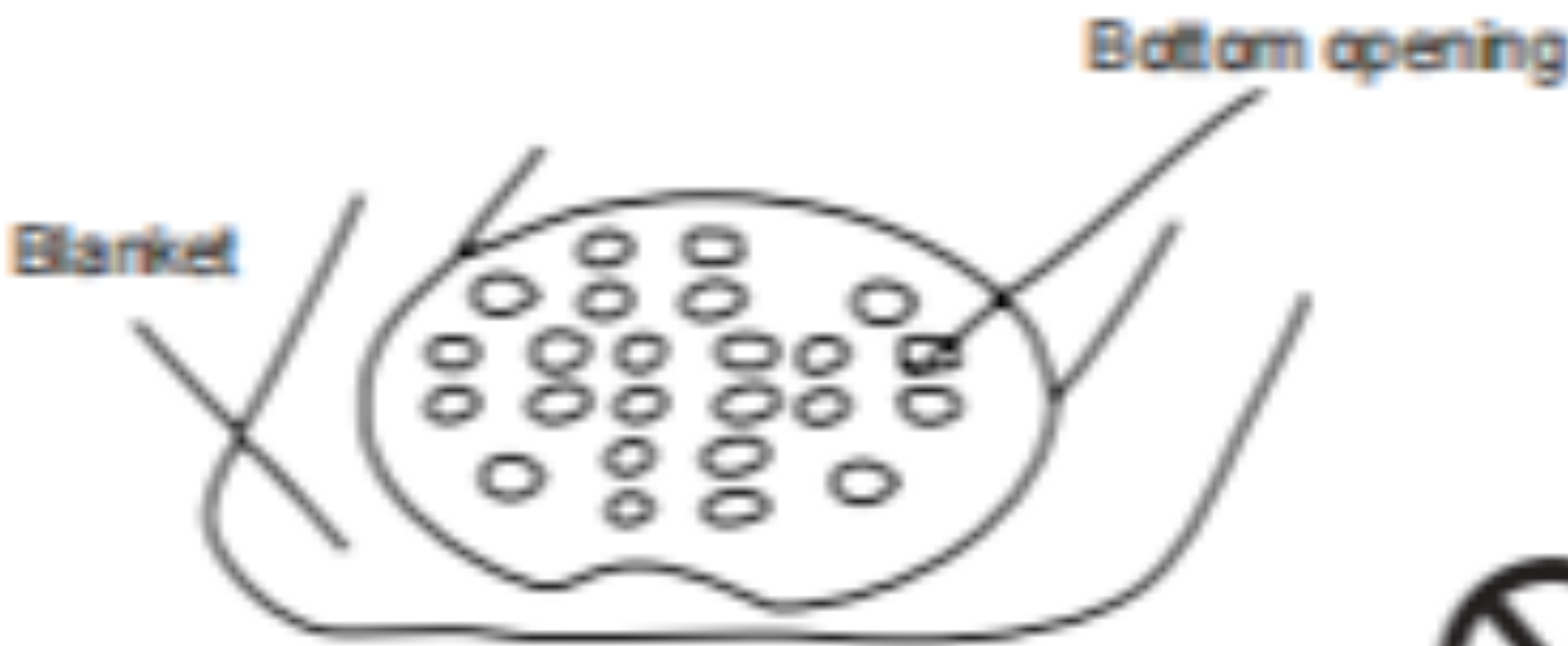
The power cord must be unplugged when the unit is idled, removed ,cleaned or at power failure.



If the supply cord is damaged, it must be replaced by the manufacturer or its service agent or a qualified technician in order to avoid a shock hazard.



Make sure the bottom ventilation, when the unit is placed on blanket.



The water-proof clothes such as raincoat are not recommended to avoid abnormal vibration or damage for clothes.





# ARLIME

A-Brighten Your Home Life

Do not place the washing machine in a damp place and do not pour water onto the control panel.



Never use water over 50°C.



Do not put hands into the rotating tub. Do not let children to play with the machine.



It is hazardous for anyone other than a competent person to carry out any service or repair operation.



Do not place any heat or heavy object on the washing machine.



Do not pour volatile solvent such as petrol and methane into the tub for washing or dry purposes.



The appliance is not intended for use by young children or infirm persons unless they have been adequately supervised by a responsible person to ensure that they can use the appliance safely.



Do not expose washing machine to direct sunlight or rain. And keep it away from heat resource.





# ARLIME

A-Brighten Your Home Life

The appliance is to be connected to the water mains using new hose-sets and that old hose-sets should not bereused.

Please operate it under 0°C~ 40°C,as extra-high or extra-low ambient temperature may cause malfunction.

## Maintenance

Clean the filter in the inlet valve

Clean the filter in the inlet valve regularly in order to prevent it from clogging

Clean the filter in the inlet valve regularly in order to prevent it from clogging



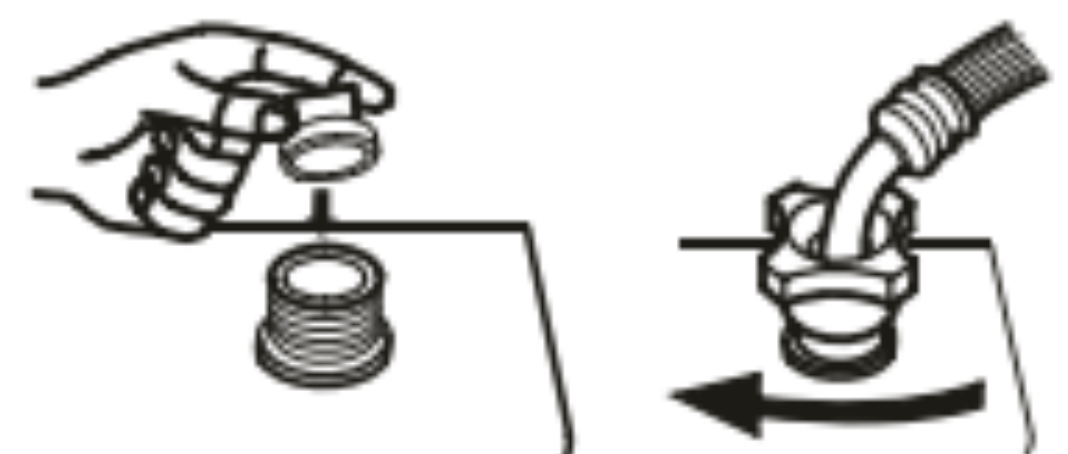
1 Take off the inlet hose and take out the valve filter.



2 Clean the valve filter with a brush.



3 Restall the valve filter and connect the inlet hose.



# ARLIME

A-Brighten Your Home Life

## Body maintenance

Note:


Clean the surface of the washing machine with a soft cloth regularly.

After washing starched or bleached laundry, the inner tub must be clear or deposit will appear




## Clean the lint filter


1. Pull upward to remove the filter assy's.




2. Take the filter from the filter cover.



3. Clean and rinse it thoroughly.



4. Reinstall the filter.





# ARLIME

A-Brighten Your Home Life

## Maintenance

Malfunction phenomenon

Reason

Start the washing machine from rinse process, the washing machine does not input the water	<ul style="list-style-type: none"><li>● The washing machine will start from the spin process in order to spin out the water and detergent from the clothes, then input the water (if there is water in the tub it will drain out the water first)</li></ul>
The wash process changes from spin to rinse	<ul style="list-style-type: none"><li>● When the clothes are not even or are on a single side of the tub, the washing machine will input the water and make the clothes balance and even.</li></ul>
The control button is useless to touch	<ul style="list-style-type: none"><li>● If want to change the Program or Water level after the washing machine started, please touch the Start/Pause button to reset the process</li></ul>
Spin delay	<ul style="list-style-type: none"><li>● The washing machine will delay 15 to 60 seconds to enter spin process after drain or after selecting spin process only</li></ul>

### Trouble Shooting Method

For some troubles, the machine buzzer will ring and alarm, and the indicator will flash.



# ARLIME

A-Brighten Your Home Life

Troubles	Indicator Light	Possible Cause	Solution
Breakdown	No indicator	The plug is badly connected to the socket or the switch is not activated.	Connect the plug properly or activate the switch
	No indicator	The socket is dead or the fuse is broken.	Contact the authorized technician
	No indicator	The current process is lost for power failure	Reuse only when power failure is eliminated
	No indicator	The voltage is too low or too high	Remove the plug and reuse it when the voltage comes to normality.
Standing drain	E1	The drain hose is blocked or hung up over 0.9m, and the water cannot finish draining within 7 min	Check the drain hose,open the lid and then close it to continue drain process.
A conflict between the tub and the cabinet during spinning	E3	The clothes are not laid evenly in the tub.The machine will try to make a automatic check and ajustment for 2 times,or if nothing available ,an alarm will be given.	Open the lid,distribute the clothes evenly in the tub and then close the lid to continue.
Insufficient water supply	E4	The tap is closed,water supply is cut off or water pressure is too low,so the water fails to reach to the desired level within 30 minutes.	Open the tap or use the machine after the water pressure comes to normal.Open the wash lid, close it and restart to input water.
Abnormal water level sensor	E6	The sensor fails for short or open current,etc.and an alarm will be given.	Contact the authorized technician.
Unstoppable inlet or automatic drain	E7	Abormalities occur in PCB, inlet valve or water level sensor	Cut off the power after draining , and try to contact with the authorized technician.
Memory chips break down	E9	The chip cannot be accessed.	Turn off the machine.
Fail to power off or power on	Unending process or no indicator	PCB is broken.	Contact the authorized technician.



# ARLIME

A-Brighten Your Home Life

## Program Time Table

Program	Soak (min)		Rinse (min)									Spin (min)		Tot (min)			
			1st rinse			2nd rinse			3rd rinse								
Fuzzy	Inlet water	18	Drain water	Spin 3	Inlet water	Wash 3	Drain water	Spin 3	Inlet water	Wash 3	/			Drain water	7	39	
Speedy		3		Spin 2		Wash 2		/	Inlet water	/					3	14	
Heavy		18		Spin 3		Wash 3		Spin 3					Wash 3		Drain water	Spin 3	Inlet water
Soak & Wash		Soak 30 /wash 20		Spin 3		Wash 5		Spin 3		Wash 5	Drain water	Spin 3	Inlet water		Wash 5	6	96
Gentle		3		Spin 2		Wash 2		Spin 2		Wash 2	/				Spin 3	26	
Single spin	/													4	7		
Single wash	Inlet water	17	/									/	19				
Air dry	/											Drain water	38	40			

Note: the table shows the default time of the system, which is not included the water inlet time. The drainage time is 2 minutes by default. The actual operation time will be different.

# ARLIME

A-Brighten Your Home Life



Questions? We' re here to help! [arlimesup@hotmail.com](mailto:arlimesup@hotmail.com) for support on this product.

Also, we would like to make sure you know that we offer an 1-year warranty Emailing to [arlimesup at hot mail.com](mailto:arlimesup@hotmail.com) with your order ID to activate the warranty and there is a chance to get new sample for free.

